

REVISION AV

ONE PLACE DECIMALS: .1 [2.54] THREE PLACE DECIMALS: .005 [.127] ANGLES 2 mm EJECTOR  
 TWO PLACE DECIMALS: .01 [.254] FOUR PLACE DECIMALS: .0020 [.0508] ± 2' HEADER ASSEMBLY  
 DWG NO: EHT-1XX-01-XX-D-XX-XX-X-XX-XX  
 SHEET 1 OF 2

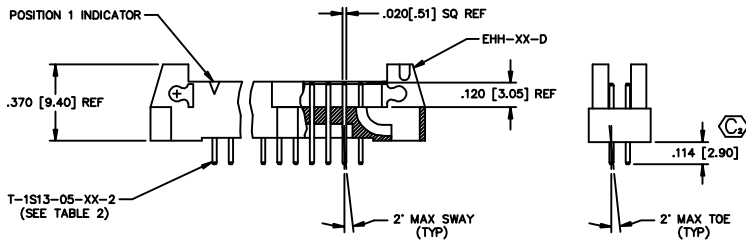
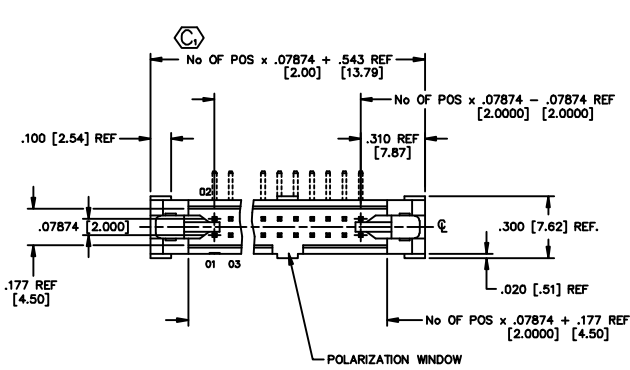


FIG -01  
 THRU HOLE VERSION  
 LATCH REMOVED FOR CLARITY

EHT-1XX-01-XX-D-XX-XX-X-XX-XX

NO. OF POSITIONS  
 -05 THRU -25

LEAD STYLE  
 -01

PLATING SPECIFICATION  
 -S: SELECTIVE GOLD (USE T-1S13-XX-S-2)  
 -F: FLASH SELECTIVE GOLD (USE T-1S13-XX-F-2)  
 -T: TIN (USE T-1S13-XX-T-2)  
 -H: HEAVY GOLD (USE T-1S13-XX-H-2)  
 -L: LIGHT SELECTIVE MATTE TIN TAIL (USE T-1S13-XX-L-2)  
 -SM: SELECTIVE GOLD, MATTE TIN TAIL (USE T-1S13-XX-S-2)  
 -FM: FLASH SELECTIVE GOLD, MATTE TIN TAIL (USE T-1S13-XX-F-2)  
 -TM: MATTE TIN (USE T-1S13-XX-T-2)  
 -LM: LIGHT SELECTIVE GOLD, MATTE TIN TAIL (USE T-1S13-XX-L-2)

OPTION 1  
 -P: PICK & PLACE PAD (FOR -SM ONLY, USE PPP-24) (USE PPP-55 WITH -SM-TR OPTION)  
 -K: OPTION (POLYIMIDE FILM PAD) (FOR -SM ONLY)

OPTION 2  
 -LC: LOCKING CLIP (SEE NOTE 5) (FOR -SM ONLY) (SEE FIG. 4, USE LC-09-TM)

OPTION 3  
 -TR: TAPE & REEL PACKAGING (FOR -SM, -SM-P, AND -SM-K ONLY)

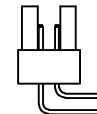
POLARIZED OPTION  
 -XX= PIN OMITTED

ROW SPECIFICATION  
 -D: DOUBLE

TAIL OPTION  
 -RA= RIGHT ANGLE (USE EHH-XX-D)  
 -SM= SURFACE MOUNT (USE EHH-XX-D) (LEAVE BLANK FOR THROUGH HOLE)

PIN	OAL
T-1S13-05-XX-2	.397
T-1S13-06-XX-2	.555
T-1S13-15-XX-2	.714

USE EHH-XX-D



REF VIEW FOR -RA OPTION

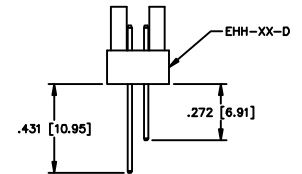


REF VIEW FOR -SM OPTION

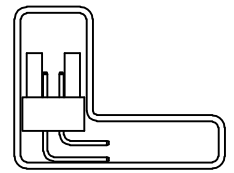
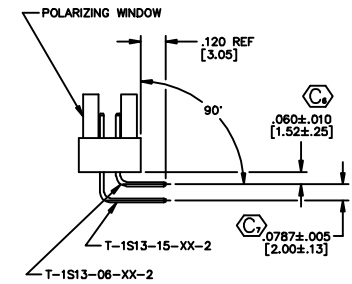
NOTES:

1. MAX PIN ROTATION IN BODY: 2°
2. PUSHOUT FORCE: 1 LB MINIMUM.
3. DIMENSIONS [ ] ARE IN MILLIMETERS.
4. Ⓢ REPRESENTS A CRITICAL DIMENSION.
5. DUE TO THE HIGH AMOUNT OF INSERTION FORCE NEEDED, THE -LC OPTION IS NOT COMPATIBLE WITH AUTO PLACEMENT. SAMTEC RECOMMENDS MANUAL PLACEMENT FOR ALL ASSEMBLIES WITH THE -LC OPTION.

FIG -02  
 RIGHT ANGLE VERSION  
 DIFFERENT WHERE SHOWN OTHERWISE SAME AS FIG -01  
 -RA OPTION IN-PROCESS



-RA OPTION



-RA OPTION PACKAGING VIEW

PACKAGING TUBE INSTRUCTIONS

STYLE	TUBE	PLUG
STRAIGHT	PT-1-24-16-29	TP-13
RIGHT ANGLE	ASP-90341-01-S	TP-13
SURFACE MOUNT	PT-1-24-01-44	TP-13

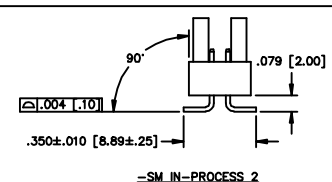
MATERIAL:  
 LIQUID CRYSTAL POLYMER  
 COLOR: BLACK  
 TERMINAL:  
 PHOSPHOR BRONZE

**samtec**

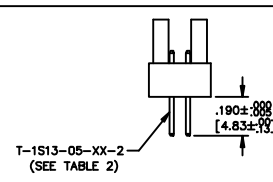
520 PARK EAST BLVD. NEW ALBANY, INDIANA 47150  
 PHONE (812) 944-8733 P.O. BOX 1147  
 CODE 85322

MADE BY PURVIS 2-28-94 APPROVAL  
 CHECKED BY REUNER 8-18-94 GR EHT-1XX-01-XX-D-XX-XX-X-XX-XX

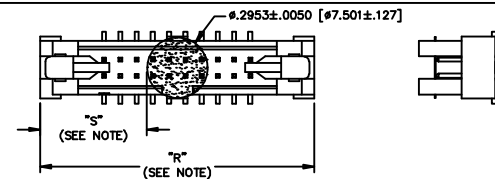
PROPRIETARY NOTE  
 THE INFORMATION CONTAINED HEREIN IS THE PROPERTY OF SAMTEC CORPORATION AND IS UNCLASSIFIED UNLESS INDICATED OTHERWISE. IT IS TO BE KEPT CONFIDENTIAL AND NOT TO BE DISCLOSED TO ANY OTHER PARTY WITHOUT THE WRITTEN PERMISSION OF SAMTEC CORPORATION.



-SM IN-PROCESS 2



-SM IN-PROCESS 1



NOTE: "R" = USED MEASURED DIMENSION (REF)  
 "S" = (R - .2953 [7.50]) / 2 ± 0.020 [.51]

FIG -03  
 -K OPTION (POLYIMIDE FILM PAD)