

DESIGNED & DIMENSIONED
IN MILLIMETERS [INCHES]

GRF1-P-C-X-ST-CA1

GENDER
-P: PLUG

TERMINATION
-CA1: RG-316 CABLE

TYPE
-C: CABLE

ORIENTATION
-ST: STRAIGHT

PLATING SPECIFICATIONS
-H: HEAVY GOLD (SEE NOTES 7 & 8)
(SUB-GRF1-P-C-F-ST-CA1)
(GRF1-PIN-001-H)
(MCX-FER-001-F)

DO NOT
SCALE FROM
THIS PRINT

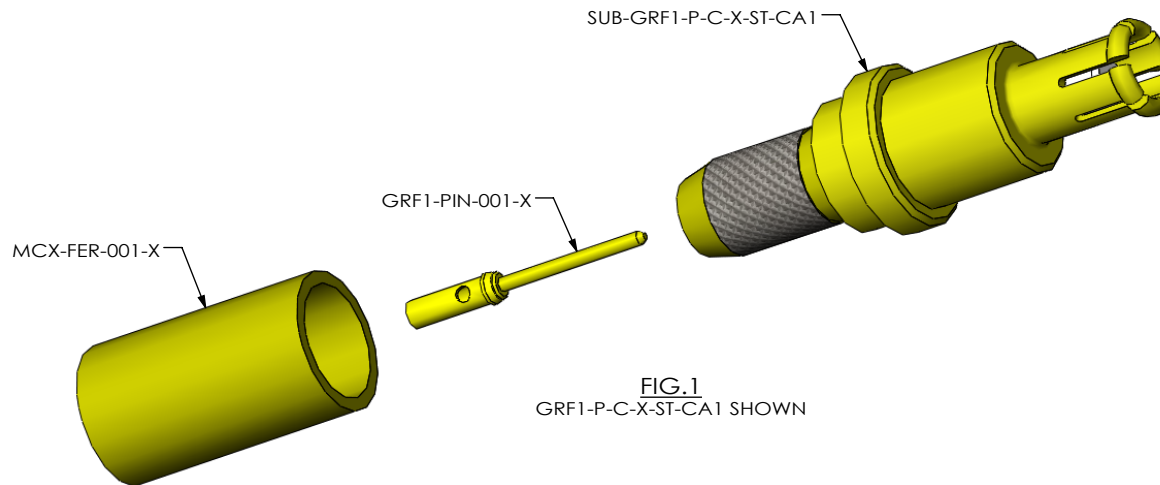
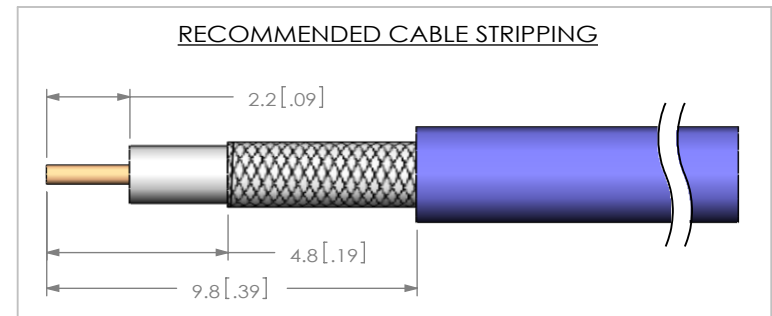


FIG.1
GRF1-P-C-X-ST-CA1 SHOWN




Pb THIS PRODUCT MANUFACTURED
WITH LEAD-FREE PROCESSING

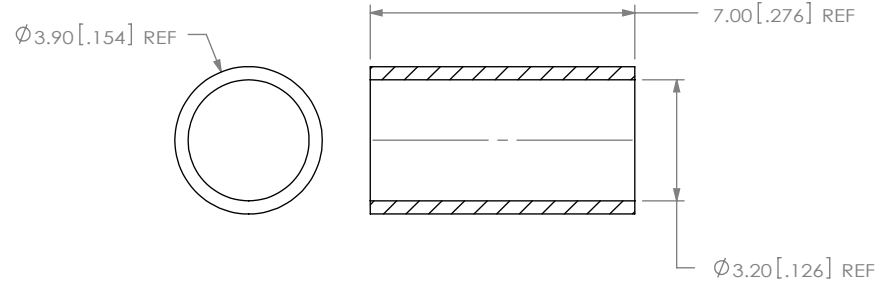
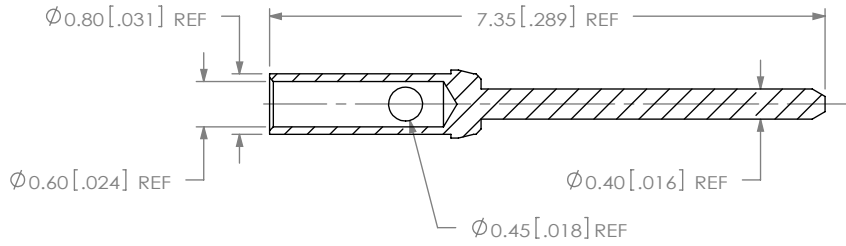
NOTES:

- ⊕ REPRESENTS A CRITICAL DIMENSION.
- PUSHOUT FORCE FOR CENTER CONTACT: 2.22 N [.5 LB] MIN.
- SEE SHEET 3 FOR TERMINATION INFORMATION.
- COMPONENTS TO BE SHIPPED UNASSEMBLED.
- SAMPLE ORDERS: TO BE PACKAGED IN INDIVIDUAL KIT FORM.
PRODUCTION ORDERS: EACH COMPONENT TO BULK PACKAGED.
- RoHS COMPLIANT.
- COMPONENT PLATING DESIGNATIONS:
-H: 0.000030" MIN. GOLD OVER 0.000050" MIN. NICKEL.
-F: 0.000003" MIN. GOLD OVER 0.000050" MIN. NICKEL.
- ASSEMBLY PLATING DESIGNATIONS:
-H: (CENTER CONTACT)-H:
(OUTER CONTACT)-F:
(REMAINING METAL PARTS)-F:

C:\EnterpriseVault\DWG\MISC\MKTG\GRF1-P-C-X-ST-CA1-MKT.SLDDRW

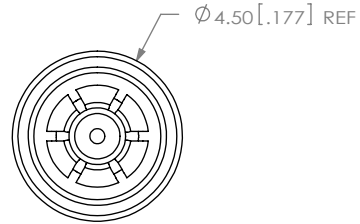
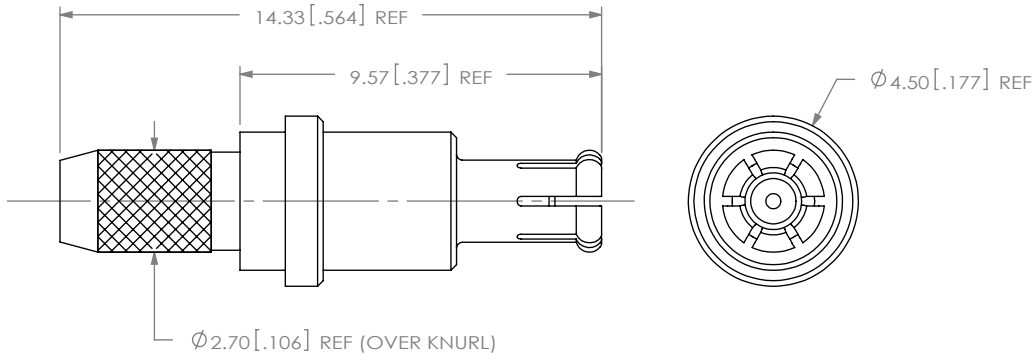
<p>UNLESS OTHERWISE SPECIFIED DIMENSIONS ARE IN MILLIMETERS [INCHES]</p> <p>TOLERANCES ARE: DECIMALS ANGLES .X: ±0.3 [.01] 2° .XX: ±0.13 [.005] .XXX: ±0.051 [.0020]</p>	<p>PROPRIETARY NOTE THIS DOCUMENT CONTAINS INFORMATION CONFIDENTIAL AND PROPRIETARY TO SAMTEC, INC. AND SHALL NOT BE REPRODUCED OR TRANSFERRED TO OTHER DOCUMENTS OR DISCLOSED TO OTHERS OR USED FOR ANY PURPOSE OTHER THAN THAT WHICH IT WAS OBTAINED WITHOUT THE EXPRESSED WRITTEN CONSENT OF SAMTEC, INC.</p>	 <p>520 PARK EAST BLVD, NEW ALBANY, IN 47150 PHONE: 812-944-6733 FAX: 812-948-5047 e-Mail: info@SAMTEC.com code: 55322</p>
<p>MATERIAL: DO NOT SCALE DRAWING SHEET SCALE: 5:1</p> <p>SHELL: COPPER ALLOY CABLE BODY, FERRULE, PIN: BRASS DIELECTRIC: PTFE</p>	<p>DESCRIPTION: GRF STRAIGHT PLUG ASSEMBLY</p>	
<p>DWG. NO. GRF1-P-C-X-ST-CA1</p>		
<p>BY: G. HERMAN 07/23/2009</p>		<p>SHEET 1 OF 3</p>

REVISION A



SAMTEC PART NUMBER	ITEM
GRF1-PIN-001-X	PIN

SAMTEC PART NUMBER	ITEM
MCX-FER-001-X	FERRULE



C:\EnterpriseVault\DWG\MISC\MKTG\GRF1-P-C-X-ST-CA1-MKT.SLDDRW

PROPRIETARY NOTE
 THIS DOCUMENT CONTAINS INFORMATION CONFIDENTIAL AND PROPRIETARY TO SAMTEC, INC. AND SHALL NOT BE REPRODUCED OR TRANSFERRED TO OTHER DOCUMENTS OR DISCLOSED TO OTHERS OR USED FOR ANY PURPOSE OTHER THAN THAT WHICH IT WAS OBTAINED WITHOUT THE EXPRESSED WRITTEN CONSENT OF SAMTEC, INC.

DO NOT SCALE DRAWING
 SHEET SCALE: 5:1



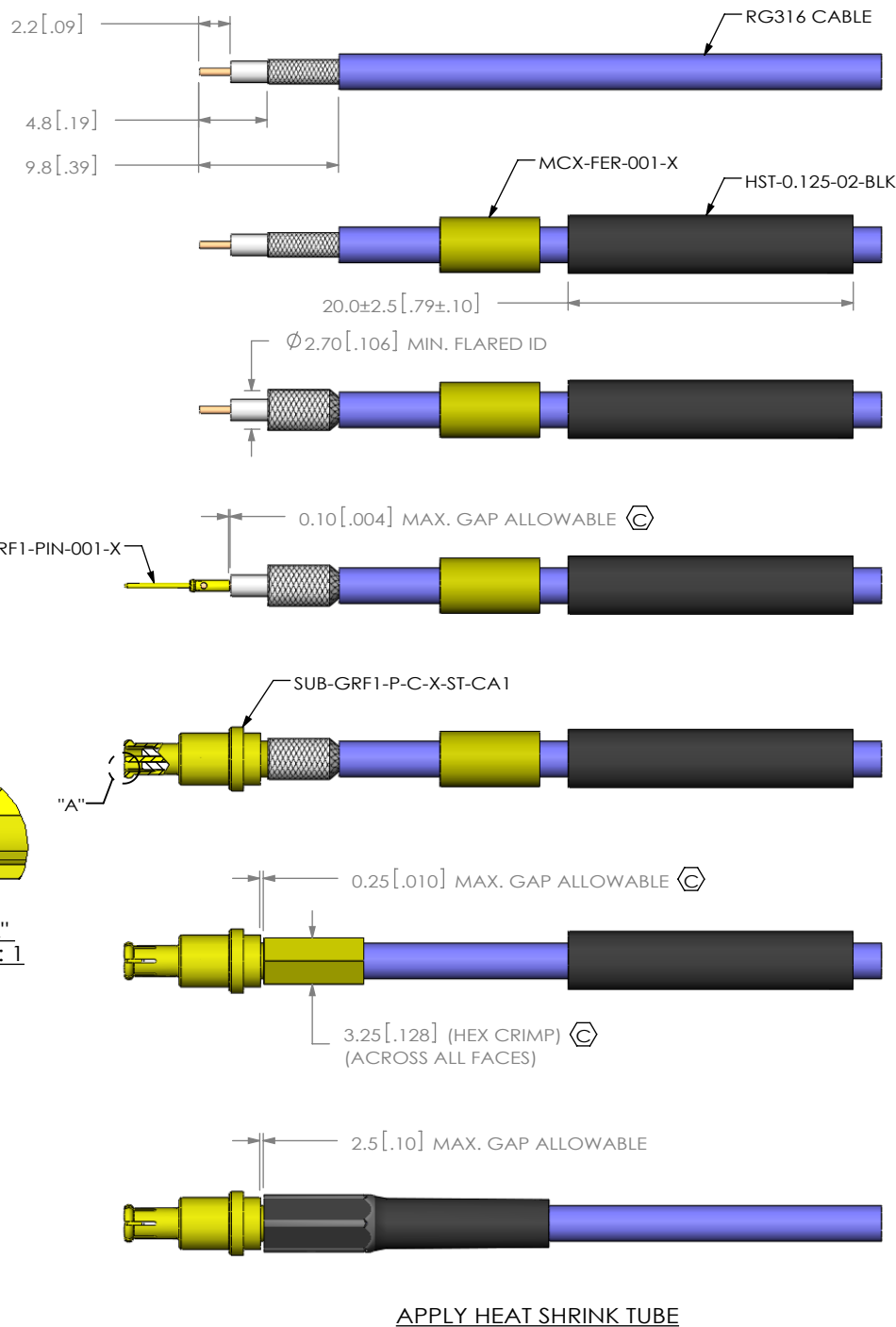
520 PARK EAST BLVD, NEW ALBANY, IN 47150
 PHONE: 812-944-6733 FAX: 812-948-5047
 e-Mail: info@SAMTEC.com code: 55322

DESCRIPTION: GRF STRAIGHT PLUG ASSEMBLY

DWG. NO. GRF1-P-C-X-ST-CA1

BY: G. HERMAN 07/23/2009 SHEET 2 OF 3

SAMTEC PART NUMBER	ITEM
SUB-GRF1-P-C-X-ST-CA1	SUB ASSEMBLY



STRIP AND TIN INNER CONDUCTOR

ADD HEAT SHRINK TUBE AND FERRULE

FLARE SHIELD

SOLDER SIGNAL PIN

ADD SUB-GRF1-P-C-X-ST-CA1

CRIMP FERRULE
(USE RF CRIMP HAND TOOL #CAT-HT-126667-21 OR EQUIVALENT)

APPLY HEAT SHRINK TUBE

DETAIL "A"
SCALE 10 : 1

PROPRIETARY NOTE

THIS DOCUMENT CONTAINS INFORMATION CONFIDENTIAL AND PROPRIETARY TO SAMTEC, INC. AND SHALL NOT BE REPRODUCED OR TRANSFERRED TO OTHER DOCUMENTS OR DISCLOSED TO OTHERS OR USED FOR ANY PURPOSE OTHER THAN THAT WHICH IT WAS OBTAINED WITHOUT THE EXPRESSED WRITTEN CONSENT OF SAMTEC, INC.

DO NOT SCALE DRAWING

SHEET SCALE: 2:1



520 PARK EAST BLVD, NEW ALBANY, IN 47150
PHONE: 812-944-6733 FAX: 812-948-5047
e-Mail: info@SAMTEC.com code: 55322

DESCRIPTION: GRF STRAIGHT PLUG ASSEMBLY

DWG. NO. GRF1-P-C-X-ST-CA1

BY: G. HERMAN 07/23/2009 SHEET 3 OF 3