

DESIGNED & DIMENSIONED  
IN MILLIMETERS [INCHES]

**MCX-J-C-X-ST-CA1**

GENDER  
-J: JACK

TYPE  
-C: CABLE

PLATING SPECIFICATION  
-H: HEAVY GOLD (SEE NOTE 7 & 8)  
(MCX-FER-001-F)  
(MCX-SKT-001-H)  
(SUB-MCX-J-C-F-ST-CA1)

TERMINATION  
-CA1: CABLE  
(RG174 OR RG316)

ORIENTATION  
-ST: STRAIGHT

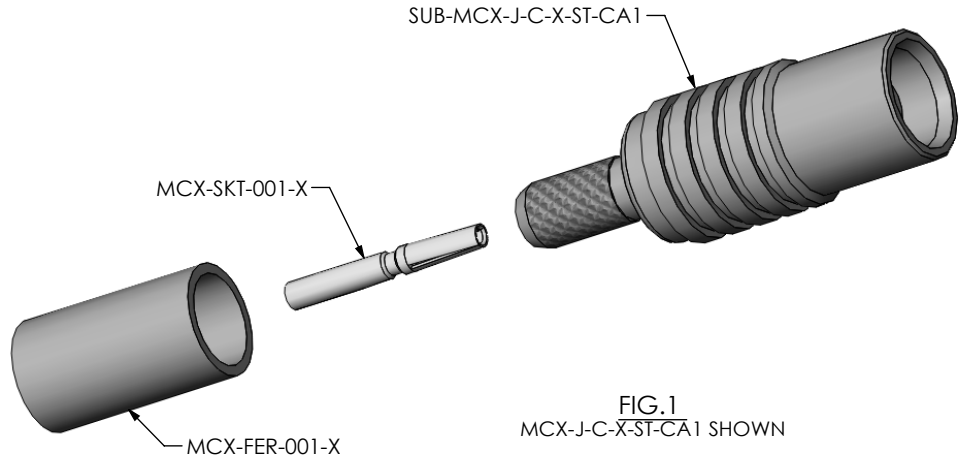
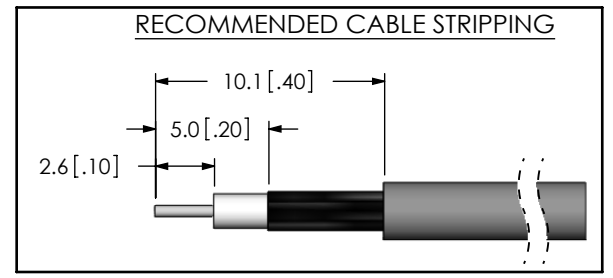


FIG.1  
MCX-J-C-X-ST-CA1 SHOWN



NOTES:

1. Ⓢ REPRESENTS A CRITICAL DIMENSION.
2. CENTER CONTACT PUSHOUT FORCE: 10 N [2.25 LB] MIN.
3. SEE SHEET 3 FOR TERMINATION INFORMATION.
4. NOTE DELETED.
5. PRODUCT TO BE PACKAGED PER PACKAGING STANDARD CO-HD-WI-3040-M.
6. RoHS COMPLIANT.
7. PLATING: -F: .00003" MIN GOLD OVER .000050" MIN NICKEL.  
-H: .000030" MIN GOLD OVER .000050" MIN NICKEL.
8. ASSEMBLY PLATING DESIGNATIONS:  
-H: (CENTER CONTACT)-H  
(OUTER CONTACT) -F  
(REMAINING METAL PARTS) -F

**THIS PRODUCT MANUFACTURED WITH LEAD-FREE PROCESSING**

F:\DWG\MISC\MKTG\MCX-J-C-X-ST-CA1-MKT.SLDDRW

UNLESS OTHERWISE SPECIFIED, DIMENSIONS ARE IN MILLIMETERS [INCHES]. TOLERANCES ARE:

DECIMALS	ANGLES
.X: ±0.3 [.01]	2°
.XX: ±0.13 [.005]	
.XXX: ±0.051 [.0020]	

**PROPRIETARY NOTE**  
THIS DOCUMENT CONTAINS INFORMATION CONFIDENTIAL AND PROPRIETARY TO SAMTEC, INC. AND SHALL NOT BE REPRODUCED OR TRANSFERRED TO OTHER DOCUMENTS OR DISCLOSED TO OTHERS OR USED FOR ANY PURPOSE OTHER THAN THAT WHICH IT WAS OBTAINED WITHOUT THE EXPRESSED WRITTEN CONSENT OF SAMTEC, INC.

520 PARK EAST BLVD, NEW ALBANY, IN 47150  
PHONE: 812-944-6733 FAX: 812-948-5047  
e-Mail: info@SAMTEC.com code: 55322

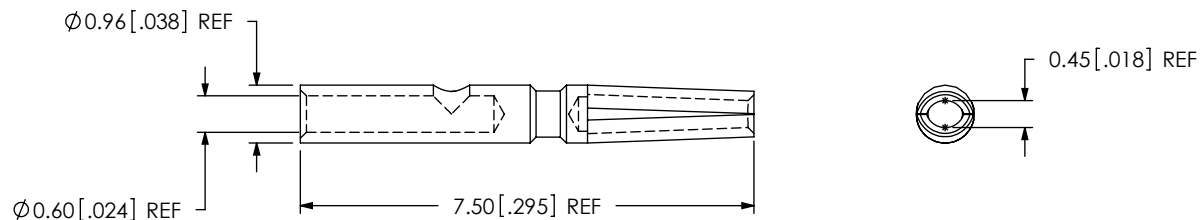
**MATERIAL:** DO NOT SCALE DRAWING SHEET SCALE: 4:1

SHELL, FERRULE: BRASS  
CONTACT: COPPER ALLOY  
DIELECTRIC: PTFE

DESCRIPTION:  
MCX STRAIGHT CABLE JACK, RG174 & RG316- 50 OHM

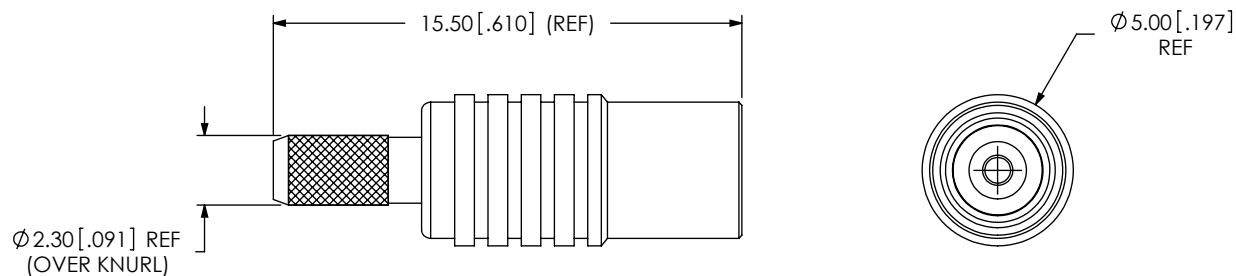
DWG. NO.  
**MCX-J-C-X-ST-CA1**

BY: R MUSSER 02/06/2008 SHEET 1 OF 3

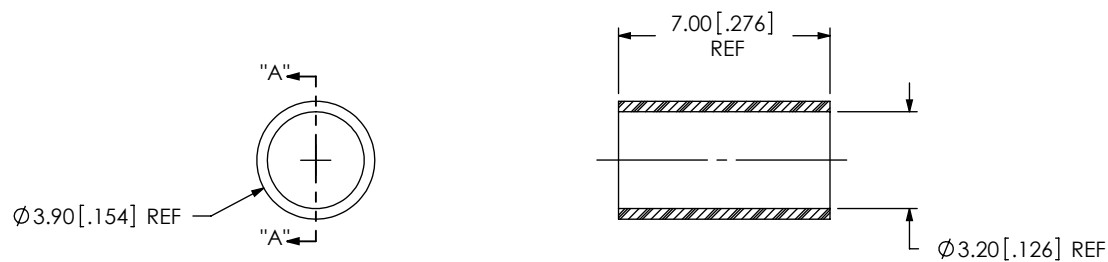


SCALE 8:1

SAMTEC PART NUMBER	ITEM
MCX-SKT-001-X	SOCKET



SAMTEC PART NUMBER	ITEM
SUB-MCX-J-C-X-ST-CA1	SUB ASSEMBLY



SECTION "A"-A

SAMTEC PART NUMBER	ITEM
MCX-FER-001-X	FERRULE

F:\DWG\MISC\MKTG\MCX-J-C-X-ST-CA1-MKT.SLDDRW

**PROPRIETARY NOTE**  
 THIS DOCUMENT CONTAINS INFORMATION CONFIDENTIAL AND PROPRIETARY TO SAMTEC, INC. AND SHALL NOT BE REPRODUCED OR TRANSFERRED TO OTHER DOCUMENTS OR DISCLOSED TO OTHERS OR USED FOR ANY PURPOSE OTHER THAN THAT WHICH IT WAS OBTAINED WITHOUT THE EXPRESSED WRITTEN CONSENT OF SAMTEC, INC.

DO NOT SCALE DRAWING

SHEET SCALE: 4:1

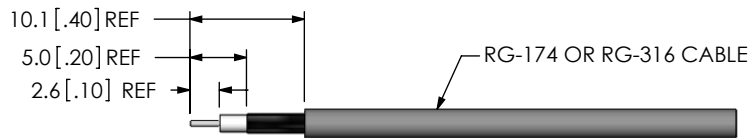


520 PARK EAST BLVD, NEW ALBANY, IN 47150  
 PHONE: 812-944-6733 FAX: 812-948-5047  
 e-Mail: info@SAMTEC.com code: 55322

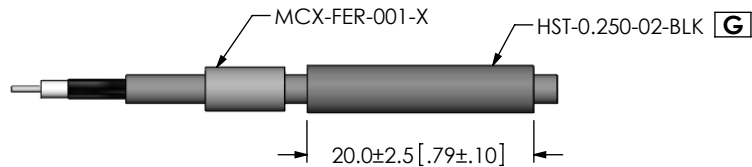
DESCRIPTION:  
 MCX STRAIGHT CABLE JACK, RG174 & RG316- 50 OHM

DWG. NO.  
 MCX-J-C-X-ST-CA1

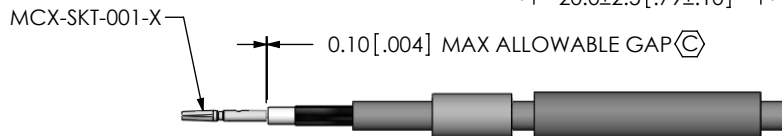
BY: R MUSSER 02/06/2008 SHEET 2 OF 3



STRIP AND TIN INNER CONDUCTOR

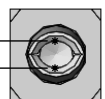


ADD HEAT SHRINK TUBE AND FERRULE



SOLDER SIGNAL SOCKET

0.45 [.018] REF



DETAIL 'B'  
SCALE 8 : 1

Ø 2.30 [.091]  
(MIN. FLARED ID)



FLARE SHIELD

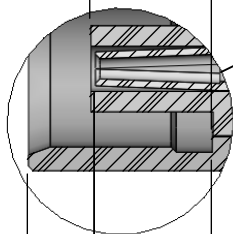
2.68 [.106] REF  
TO INSULATOR

SUB-MCX-J-C-X-ST-CA1



ADD SUB-MCX-J-C-X-ST-CA1

1.48±0.15 [.058±.006]  
TO CENTER CONTACT



DETAIL 'A'  
SCALE 6 : 1

0.25 [.010] MAX ALLOWABLE GAP



CRIMP FERRULE  
(USE RF CRIMP HAND TOOL # CAT-HT-126667-21)

2.58 [.102] REF  
TO CENTER CONTACT

3.25 [.128] HEX CRIMP  
(ACROSS 2 FACES)

0.6 [0.03] MAX GAP ALLOWABLE



APPLY HEAT SHRINK TUBING

F:\DWG\MISC\MKTG\MCX-J-C-X-ST-CA1-MKT.SLDRW

**PROPRIETARY NOTE**

THIS DOCUMENT CONTAINS INFORMATION CONFIDENTIAL AND PROPRIETARY TO SAMTEC, INC. AND SHALL NOT BE REPRODUCED OR TRANSFERRED TO OTHER DOCUMENTS OR DISCLOSED TO OTHERS OR USED FOR ANY PURPOSE OTHER THAN THAT WHICH IT WAS OBTAINED WITHOUT THE EXPRESSED WRITTEN CONSENT OF SAMTEC, INC.

DO NOT SCALE DRAWING

SHEET SCALE: 1:0.666667



520 PARK EAST BLVD, NEW ALBANY, IN 47150  
PHONE: 812-944-6733 FAX: 812-948-5047  
e-Mail: info@SAMTEC.com code: 55322

DESCRIPTION:  
MCX STRAIGHT CABLE JACK, RG174 & RG316- 50 OHM

DWG. NO.  
MCX-J-C-X-ST-CA1

BY: R MUSSER 02/06/2008 SHEET 3 OF 3