

DESIGNED & DIMENSIONED  
IN MILLIMETERS [INCHES]

MCX-J-C-X-ST-CA2

GENDER  
-J: JACK

TYPE  
-C: CABLE

TERMINATION  
-CA2: CABLE (RG178)

ORIENTATION  
-ST: STRAIGHT

PLATING SPECIFICATION  
-H: HEAVY GOLD (SEE NOTE 7 & 8)  
(MCX-FER-004-F)  
(MCX-FER-003-F)  
(MCX-INS-002)  
(MCX-SKT-002-H)  
(SUB-MCX-J-C-F-ST-CA2)

DO NOT  
SCALE FROM  
THIS PRINT

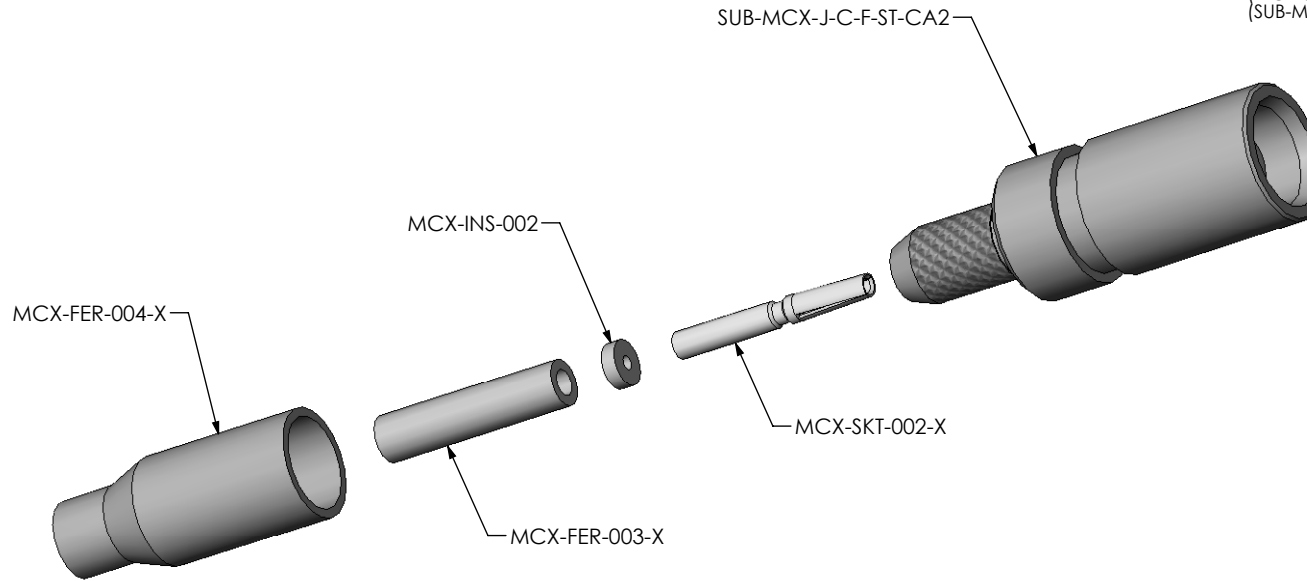
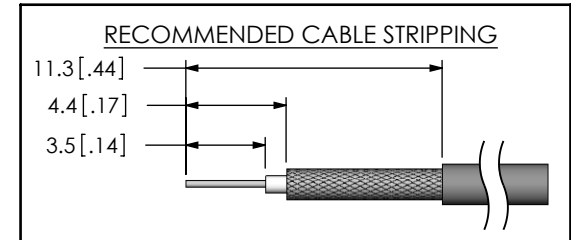


FIG.1  
MCX-J-C-X-ST-CA2 SHOWN



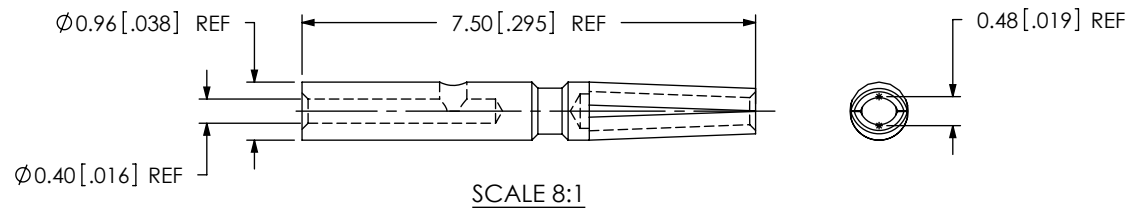
NOTES:

1.  $\text{\textcircled{C}}$  REPRESENTS A CRITICAL DIMENSION.
2. CENTER CONTACT PUSHOUT FORCE: 10 N [2.25 LB] MIN.
3. SEE SHEET 3 FOR TERMINATION INFORMATION.
4. NOTE DELETED.
5. PRODUCT TO BE PACKAGED PER PACKAGING STANDARD CO-HD-WI-3040-M.
6. RoHS COMPLIANT.
7. PLATING: -F: .00003" MIN GOLD OVER .000050" MIN NICKEL.  
-H: .000030" MIN GOLD OVER .000050" MIN NICKEL.
8. ASSEMBLY PLATING DESIGNATIONS:  
-H: (CENTER CONTACT)-H  
(OUTER CONTACT) -F  
(REMAINING METAL PARTS) -F, -N

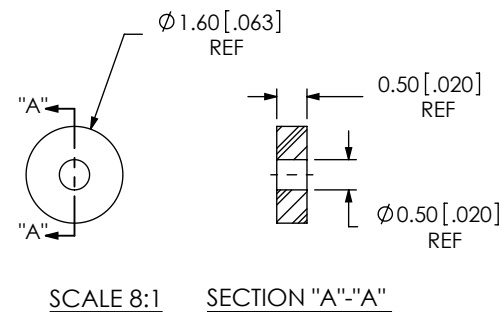
F:\DWG\SW\EXISPROD\ASSEMBLY\RF\MCX\Mcxj-c-x-st-ca2\MCX-J-C-X-ST-CA2-ASM.SLDDRW

<p>UNLESS OTHERWISE SPECIFIED, DIMENSIONS ARE IN MILLIMETERS [INCHES]. TOLERANCES ARE: DECIMALS ANGLES .X: <math>\pm 0.3</math> [.01] 2° .XX: <math>\pm 0.13</math> [.005] .XXX: <math>\pm 0.051</math> [.0020]</p>	<p>PROPRIETARY NOTE THIS DOCUMENT CONTAINS INFORMATION CONFIDENTIAL AND PROPRIETARY TO SAMTEC, INC. AND SHALL NOT BE REPRODUCED OR TRANSFERRED TO OTHER DOCUMENTS OR DISCLOSED TO OTHERS OR USED FOR ANY PURPOSE OTHER THAN THAT WHICH IT WAS OBTAINED WITHOUT THE EXPRESSED WRITTEN CONSENT OF SAMTEC, INC.</p>	<p><b>samtec</b> 520 PARK EAST BLVD, NEW ALBANY, IN 47150 PHONE: 812-944-6733 FAX: 812-948-5047 e-Mail: info@SAMTEC.com code: 55322</p>
<p>MATERIAL: DO NOT SCALE DRAWING SHEET SCALE: 4:1  SHELL, FERRULE: BRASS CONTACT: COPPER ALLOY DIELECTRIC: PTFE</p>	<p>DESCRIPTION: MCX STRAIGHT CABLE JACK, RG178- 50 OHM DWG. NO. <b>MCX-J-C-X-ST-CA2</b> BY: R MUSSER 02/06/2008 SHEET 1 OF 3</p>	

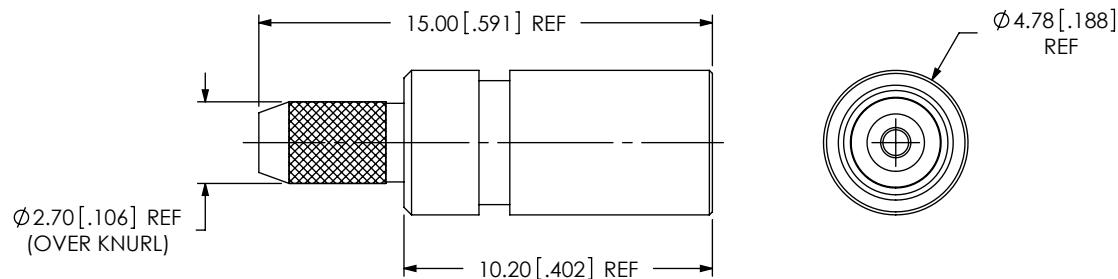
REVISION G



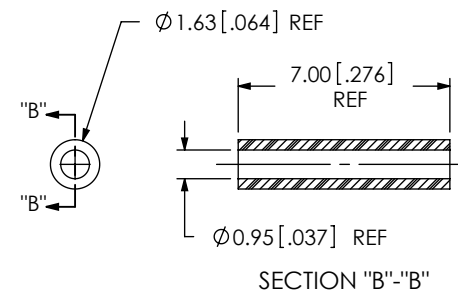
SAMTEC PART NUMBER	ITEM
MCX-SKT-002-X	SOCKET



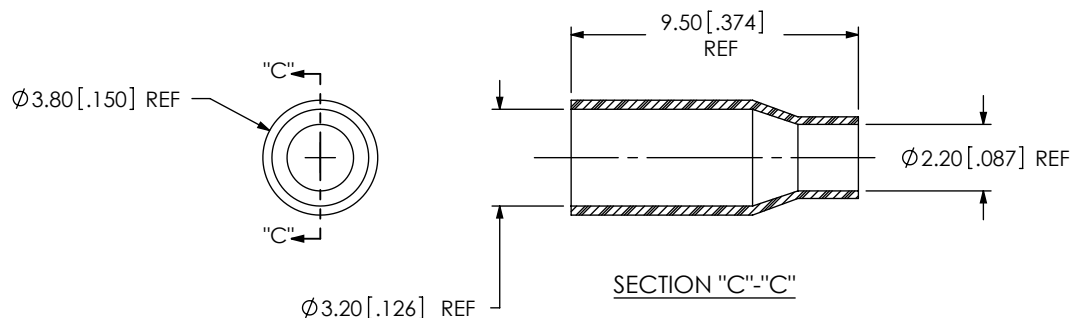
SAMTEC PART NUMBER	ITEM
MCX-INS-002	IINSULATOR



SAMTEC PART NUMBER	ITEM
SUB-MCX-J-C-X-ST-CA2	SUB ASSEMBLY



SAMTEC PART NUMBER	ITEM
MCX-FER-003-X	INNER FERRULE



SAMTEC PART NUMBER	ITEM
MCX-FER-004-X	FERRULE

F:\DWG\SW\EXISPROD\ASSEMBLY\RF\MCX\Mcxj-c-x-st-ca2\MCX-J-C-X-ST-CA2-ASM.SLDDRW

PROPRIETARY NOTE

THIS DOCUMENT CONTAINS INFORMATION CONFIDENTIAL AND PROPRIETARY TO SAMTEC, INC. AND SHALL NOT BE REPRODUCED OR TRANSFERRED TO OTHER DOCUMENTS OR DISCLOSED TO OTHERS OR USED FOR ANY PURPOSE OTHER THAN THAT WHICH IT WAS OBTAINED WITHOUT THE EXPRESSED WRITTEN CONSENT OF SAMTEC, INC.

DO NOT SCALE DRAWING

SHEET SCALE: 4:1

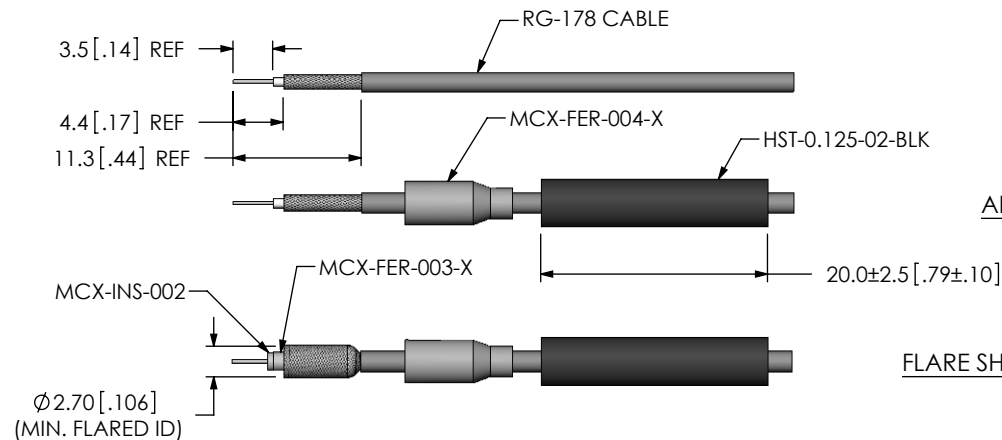
**samtec**

520 PARK EAST BLVD, NEW ALBANY, IN 47150  
PHONE: 812-944-6733 FAX: 812-948-5047  
e-Mail: info@SAMTEC.com code: 55322

DESCRIPTION:  
MCX STRAIGHT CABLE JACK, RG178- 50 OHM

DWG. NO.  
MCX-J-C-X-ST-CA2

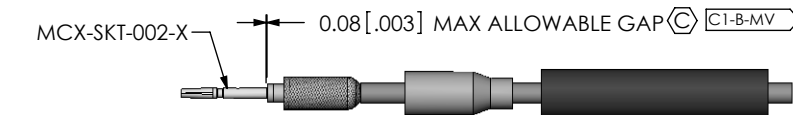
BY: R MUSSER 02/06/2008 SHEET 2 OF 3



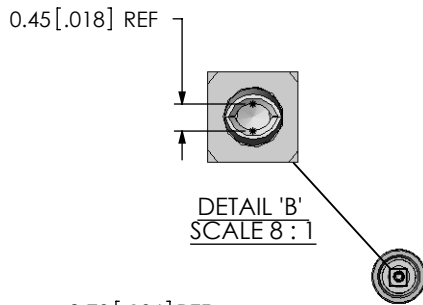
STRIP AND TIN INNER CONDUCTOR

ADD HEAT SHRINK TUBE AND FERRULE

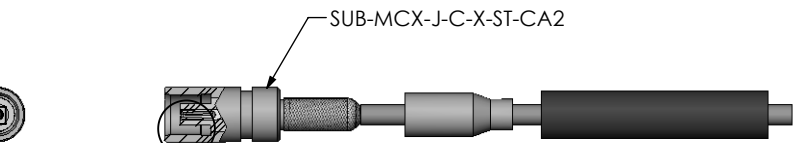
FLARE SHIELD AND ADD INNER FERRULE & INSULATOR



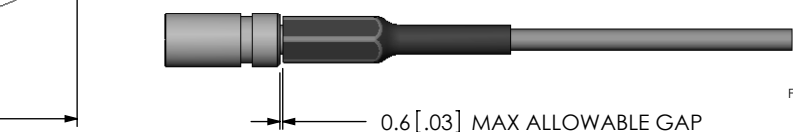
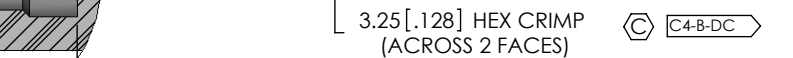
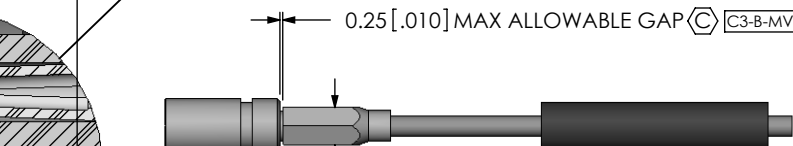
SOLDER SIGNAL SOCKET



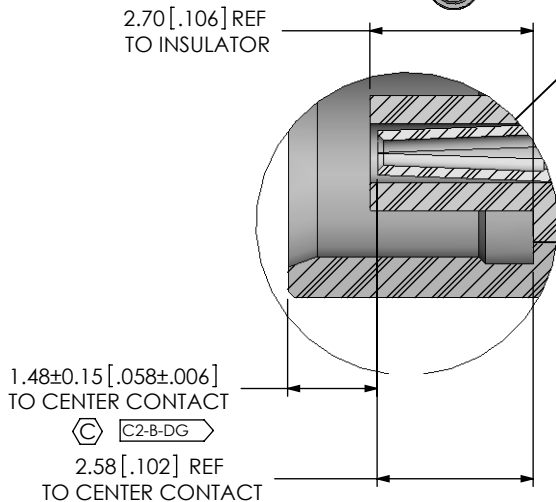
ADD SUB-MCX-J-C-X-ST-CA2



CRIMP FERRULE  
(USE RF CRIMP HAND TOOL #  
CAT-HT-126667-21 OR EQUIVALENT)



APPLY HEAT SHRINK TUBING



CRITICAL DIMENSION INSPECTION INSTRUCTION TABLE		
ASSEMBLY OPERATION	START-UP INSPECTION INSPECT CODE A	IN-PROCESS INSPECTION INSPECT CODE B
SOLDERING		C1
ASSEMBLY		C2
CRIMPING		C3, C4

F:\DWG\SW\EXISPROD\ASSEMBLY\RF\MCX\Mcx-j-c-x-st-ca2\MCX-J-C-X-ST-CA2-ASM.SLDDRW

<p><b>PROPRIETARY NOTE</b></p> <p>THIS DOCUMENT CONTAINS INFORMATION CONFIDENTIAL AND PROPRIETARY TO SAMTEC, INC. AND SHALL NOT BE REPRODUCED OR TRANSFERRED TO OTHER DOCUMENTS OR DISCLOSED TO OTHERS OR USED FOR ANY PURPOSE OTHER THAN THAT WHICH IT WAS OBTAINED WITHOUT THE EXPRESSED WRITTEN CONSENT OF SAMTEC, INC.</p> <p>DO NOT SCALE DRAWING</p> <p>SHEET SCALE: 1:0.666667</p>			
	<p>DESCRIPTION: MCX STRAIGHT CABLE JACK, RG178- 50 OHM</p>		
	<p>DWG. NO. <b>MCX-J-C-X-ST-CA2</b></p>		
	BY: R MUSSER	02/06/2008	SHEET 3 OF 3

520 PARK EAST BLVD, NEW ALBANY, IN 47150  
PHONE: 812-944-6733 FAX: 812-948-5047  
e-Mail: info@SAMTEC.com code: 55322