

DESIGNED & DIMENSIONED
IN MILLIMETERS [INCHES]

MCX-P-C-XX-RA-CA2

GENDER
-P: PLUG

TYPE
-C: CABLE

TERMINATION
-CA2: RG178 CABLE

ORIENTATION
-RA: RIGHT ANGLE

PLATING SPECIFICATION
-H: HEAVY GOLD (SEE NOTE 7 & 8)
(SUB-MCX-P-C-H-RA-CA2) [H]
(MCX-FER-005-F)
(MCX-CAP-002-F)
(MCX-INS-001)
-HN: HEAVY GOLD/NICKEL
(SEE NOTE 7 & 8)
(SUB-MCX-P-C-HN-RA-CA2) [H]
(MCX-FER-005-N)
(MCX-CAP-002-N)
(MCX-INS-001)

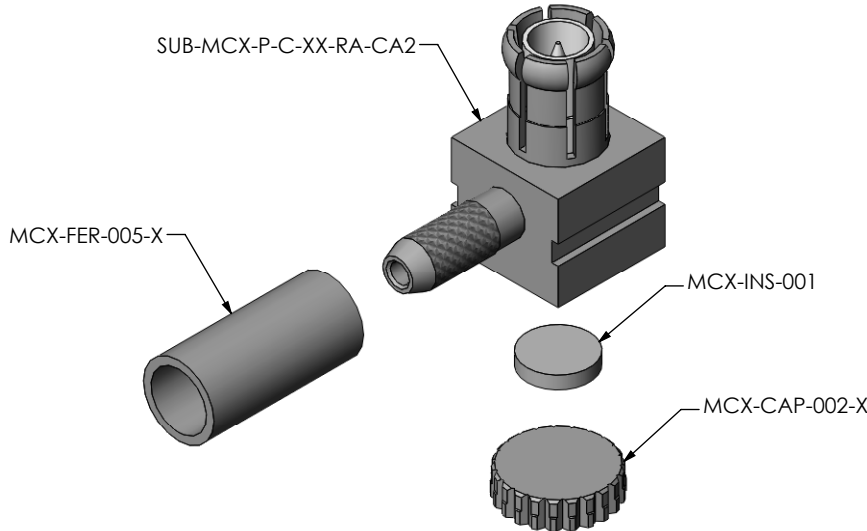
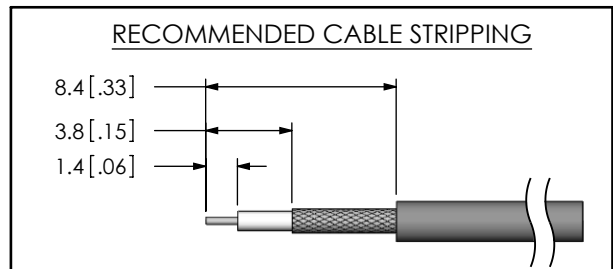


FIG.1
MCX-P-C-XX-RA-CA2 SHOWN

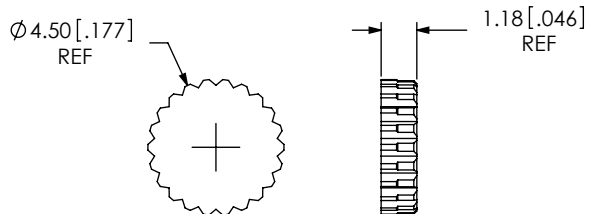
- NOTES:
- ⊗ REPRESENTS A CRITICAL DIMENSION.
 - CENTER CONTACT PUSHOUT FORCE: 26.69 N [6LB] MIN
 - SEE SHEET 3 FOR TERMINATION INFORMATION.
 - NOTE DELETED.
 - PRODUCT TO BE PACKAGED PER PACKAGING STANDARD CO-HD-WI-3040-M.
 - RoHS COMPLIANT.
 - PLATING: -F: .000003" MIN GOLD OVER .000050" MIN NICKEL.
-H: .000030" MIN GOLD OVER .000050" MIN NICKEL.
-N: .000100" MIN NICKEL
 - ASSEMBLY PLATING DESIGNATIONS:
-H: (CENTER CONTACT) -H
(OUTER CONTACT) -F
(REMAINING METAL PARTS) -F
-HN: (CENTER CONTACT) -H
(OUTER CONTACT) -F
(REMAINING METAL PARTS) -N



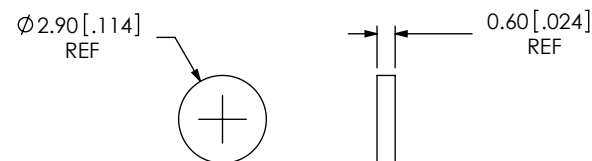
THIS PRODUCT MANUFACTURED WITH LEAD-FREE PROCESSING

c:\enterprise\vauf\DWG\MISC\MKTG\MCX-P-C-XX-RA-CA2-MKT.SLDDRW

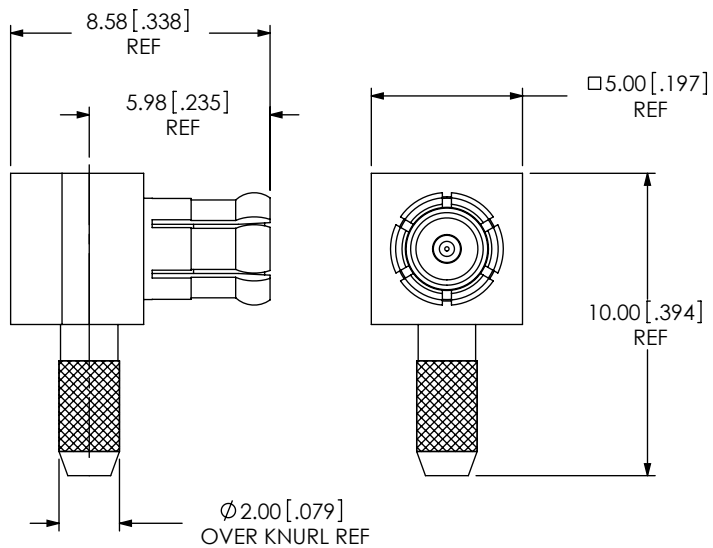
<p>UNLESS OTHERWISE SPECIFIED, DIMENSIONS ARE IN MILLIMETERS [INCHES]. TOLERANCES ARE:</p> <p>DECIMALS ANGLES</p> <p>.X: ±0.3 [.01] 2°</p> <p>.XX: ±0.13 [.005]</p> <p>.XXX: ±0.051 [.0020]</p>	<p>PROPRIETARY NOTE</p> <p>THIS DOCUMENT CONTAINS INFORMATION CONFIDENTIAL AND PROPRIETARY TO SAMTEC, INC. AND SHALL NOT BE REPRODUCED OR TRANSFERRED TO OTHER DOCUMENTS OR DISCLOSED TO OTHERS OR USED FOR ANY PURPOSE OTHER THAN THAT WHICH IT WAS OBTAINED WITHOUT THE EXPRESSED WRITTEN CONSENT OF SAMTEC, INC.</p>	<p>samtec</p> <p>520 PARK EAST BLVD. NEW ALBANY, IN 47150 PHONE: 812-944-6733 FAX: 812-948-5047 e-Mail: info@SAMTEC.com code 55322</p>
<p>MATERIAL: DO NOT SCALE DRAWING SHEET SCALE: 4:1</p> <p>SHELL, FERRULE, CAP: BRASS CONTACT: BRASS DIELECTRIC: PTFE</p>	<p>DESCRIPTION: MCX RIGHT ANGLE CABLE PLUG, RG178- 50 OHM</p> <p>DWG. NO. MCX-P-C-XX-RA-CA2</p> <p>BY: R MUSSER 02/06/2008 SHEET 1 OF 3</p>	



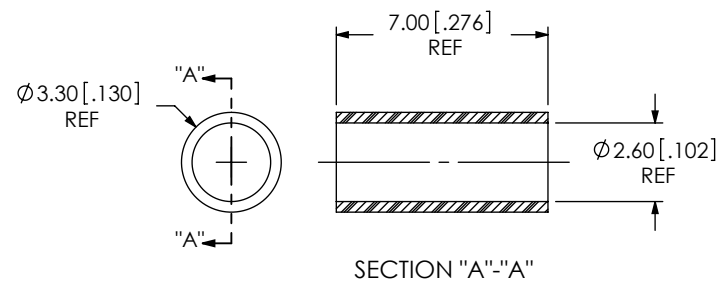
SAMTEC PART NUMBER	ITEM
MCX-CAP-002-X	CAP



SAMTEC PART NUMBER	ITEM
MCX-INS-001	INSULATOR



SAMTEC PART NUMBER	ITEM
SUB-MCX-P-C-XX-RA-CA2	SUB ASSEMBLY



SAMTEC PART NUMBER	ITEM
MCX-FER-005-X	FERRULE

c:\enterprise\vault\DWG\MISC\MKTG\MCX-P-C-XX-RA-CA2-MKT.SLDDRW

PROPRIETARY NOTE
 THIS DOCUMENT CONTAINS INFORMATION
 CONFIDENTIAL AND PROPRIETARY TO
 SAMTEC, INC. AND SHALL NOT BE REPRODUCED
 OR TRANSFERRED TO OTHER DOCUMENTS OR
 DISCLOSED TO OTHERS OR USED FOR ANY
 PURPOSE OTHER THAN THAT WHICH IT WAS
 OBTAINED WITHOUT THE EXPRESSED WRITTEN
 CONSENT OF SAMTEC, INC.

DO NOT SCALE DRAWING

SHEET SCALE: 4:1

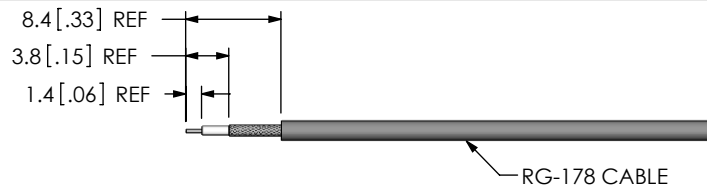


520 PARK EAST BLVD, NEW ALBANY, IN 47150
 PHONE: 812-944-6733 FAX: 812-948-5047
 e-Mail info@SAMTEC.com code 55322

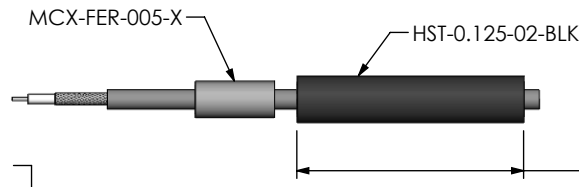
DESCRIPTION:
 MCX RIGHT ANGLE CABLE PLUG, RG178- 50 OHM

DWG. NO.
MCX-P-C-XX-RA-CA2

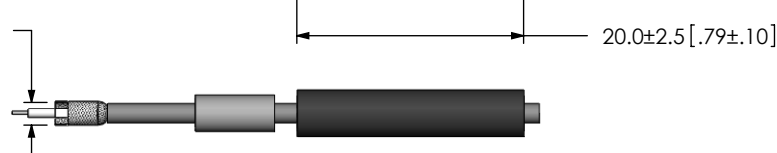
BY: R MUSSER 02/06/2008 SHEET 2 OF 3



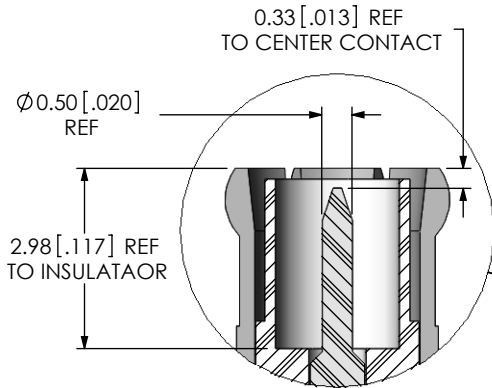
STRIP AND TIN INNER CONDUCTOR



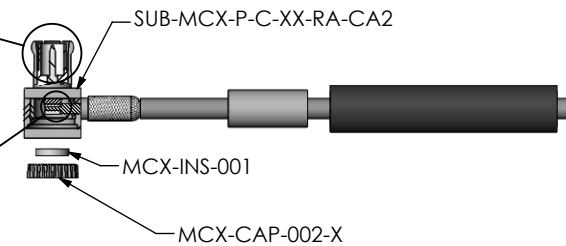
ADD HEAT SHRINK TUBE AND FERRULE



FLARE SHIELD

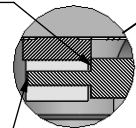


DETAIL 'A'
SCALE 8:1



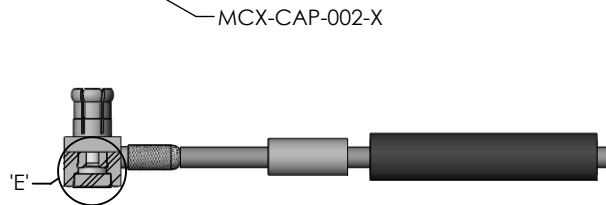
ADD SUB-MCX-P-C-XX-RA-CA2 AND SOLDER SIGNAL PIN

END OF CABLE DIELECTRIC SHOULD SEAT UP AGAINST CONTACT CUP

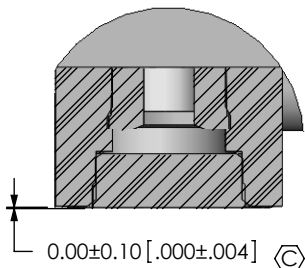


DETAIL 'B'
SCALE 6:1

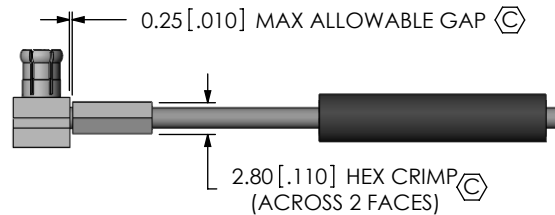
CABLE CENTER CONDUCTOR SHOULD NOT PROTRUDE OUTSIDE CONTACT CUP



INSERT INSULATOR AND CAP



DETAIL 'E'
SCALE 6:1



CRIMP FERRULE
(USE RF CRIMP HAND TOOL # CAT-HT-126667-21 OR EQUIVALENT)



APPLY HEAT SHRINK TUBING

c:\enterprisevault\DWG\MISC\MKTG\MCX-P-C-XX-RA-CA2-MKT.SLDDRW

PROPRIETARY NOTE
THIS DOCUMENT CONTAINS INFORMATION CONFIDENTIAL AND PROPRIETARY TO SAMTEC, INC. AND SHALL NOT BE REPRODUCED OR TRANSFERRED TO OTHER DOCUMENTS OR DISCLOSED TO OTHERS OR USED FOR ANY PURPOSE OTHER THAN THAT WHICH IT WAS OBTAINED WITHOUT THE EXPRESSED WRITTEN CONSENT OF SAMTEC, INC.



520 PARK EAST BLVD, NEW ALBANY, IN 47150
PHONE: 812-944-6733 FAX: 812-948-5047
e-Mail info@SAMTEC.com code 55322

DO NOT SCALE DRAWING

SHEET SCALE: 1:0.666667

DESCRIPTION:
MCX RIGHT ANGLE CABLE PLUG, RG178- 50 OHM

DWG. NO.
MCX-P-C-XX-RA-CA2

BY: R MUSSER 02/06/2008 SHEET 3 OF 3