

DESIGNED & DIMENSIONED
IN MILLIMETERS [INCHES]

DO NOT
SCALE FROM
THIS PRINT

MCX-P-C-XX-ST-CA2

GENDER
-P: PLUG

TYPE
-C: CABLE

TERMINATION
-CA2: CABLE
(RG178)

ORIENTATION
-ST: STRAIGHT

PLATING SPECIFICATION

-H: HEAVY GOLD (SEE NOTE 7 & 8)
(MCX-FER-004-F)
(MCX-INS-002)
(MCX-FER-003-F)
(MCX-PIN-002-H)
(SUB-MCX-P-C-F-ST-CA1)

-HN: HEAVY GOLD (SEE NOTE 7 & 8)
(MCX-FER-004-N)
(MCX-INS-002)
(MCX-FER-003-N)
(MCX-PIN-002-H)
(SUB-MCX-P-C-FN-ST-CA1)

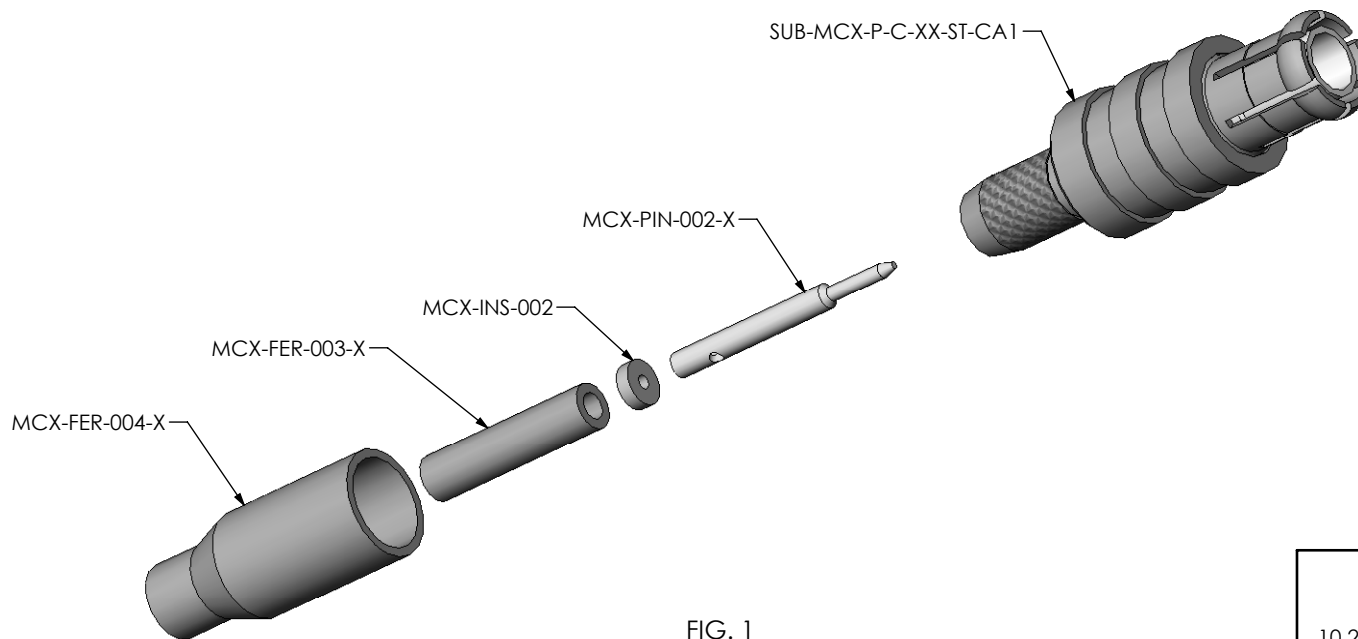
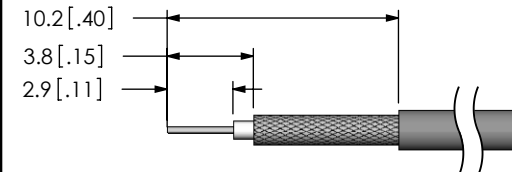


FIG. 1
MCX-P-C-XX-ST-CA2 SHOWN

NOTES:


- ⊕ REPRESENTS A CRITICAL DIMENSION.
- CENTER CONTACT PUSHOUT FORCE: 10 N [2.25 LB] MIN.
- SEE SHEET 3 FOR TERMINATION INFORMATION.
- NOTE DELETED.
- PRODUCT TO BE PACKAGED PER PACKAGING STANDARD CO-HD-WI-3040-M.
- RoHS COMPLIANT.
- PLATING: -F: .000003" MIN GOLD OVER .000050" MIN NICKEL.
-H: .000030" MIN GOLD OVER .000050" MIN NICKEL.
-N: .000100" MIN NICKEL
- ASSEMBLY PLATING DESIGNATIONS:
-H: (CENTER CONTACT)-H
(OUTER CONTACT) -F
(REMAINING METAL PARTS) -F
-HN: (CENTER CONTACT)-H
(OUTER CONTACT) -F
(REMAINING METAL PARTS) -N

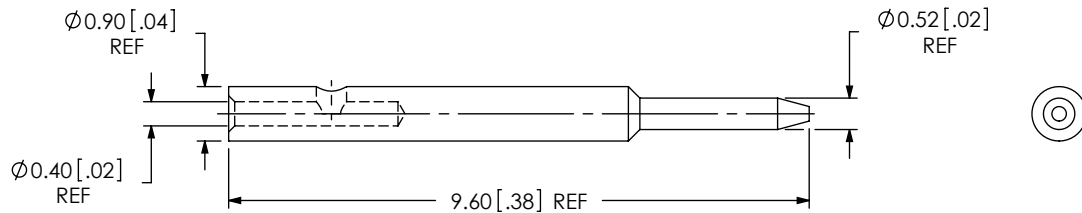
RECOMMENDED CABLE STRIPPING



**THIS PRODUCT MANUFACTURED
WITH LEAD-FREE PROCESSING**

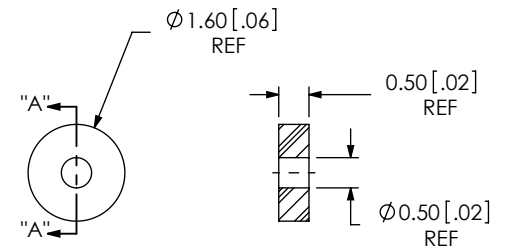
F:\DWG\SW\Exisprod\Assembly\RF\MCX\Mcx-p-c-xx-st-ca2\MCX-P-C-XX-ST-CA2.SLDDRW

<p>UNLESS OTHERWISE SPECIFIED, DIMENSIONS ARE IN MILLIMETERS [INCHES]. TOLERANCES ARE:</p> <p>DECIMALS ANGLES</p> <p>.X: ±0.3 [.01] 2°</p> <p>.XX: ±0.13 [.005]</p> <p>.XXX: ±0.051 [.0020]</p>	<p>PROPRIETARY NOTE</p> <p>THIS DOCUMENT CONTAINS INFORMATION CONFIDENTIAL AND PROPRIETARY TO SAMTEC, INC. AND SHALL NOT BE REPRODUCED OR TRANSFERRED TO OTHER DOCUMENTS OR DISCLOSED TO OTHERS OR USED FOR ANY PURPOSE OTHER THAN THAT WHICH IT WAS OBTAINED WITHOUT THE EXPRESSED WRITTEN CONSENT OF SAMTEC, INC.</p>	 <p>520 PARK EAST BLVD, NEW ALBANY, IN 47150 PHONE: 812-944-6733 FAX: 812-948-5047 e-Mail: info@SAMTEC.com code: 55322</p>
<p>MATERIAL: DO NOT SCALE DRAWING SHEET SCALE: 4:1</p> <p>SHELL, FERRULE: BRASS CONTACT: BRASS DIELECTRIC: PTFE</p>	<p>DESCRIPTION: MCX STRAIGHT CABLE PLUG, RG178- 50 OHM</p> <p>DWG. NO. MCX-P-C-XX-ST-CA2</p>	<p>BY: R MUSSER 02/06/2008 SHEET 1 OF 3</p>



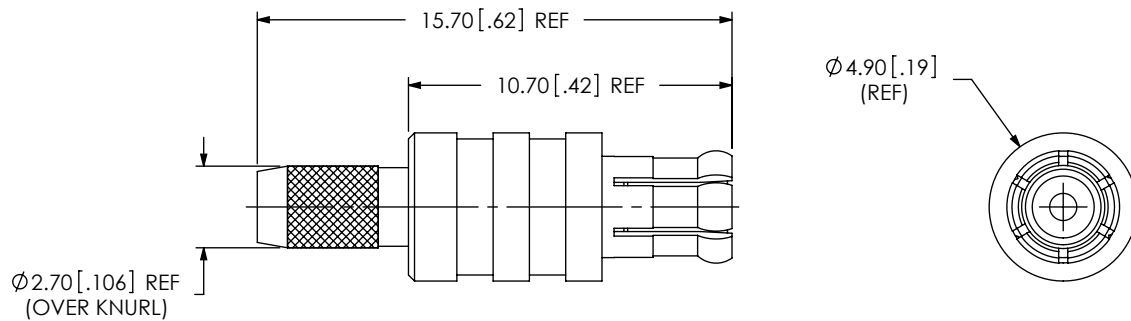
SCALE 8:1

SAMTEC PART NUMBER	ITEM
MCX-PIN-002-X	PIN

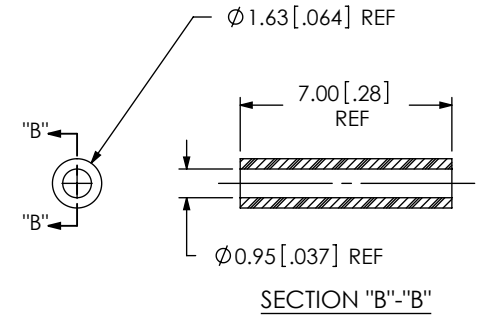


SCALE 8:1 SECTION "A"- "A"

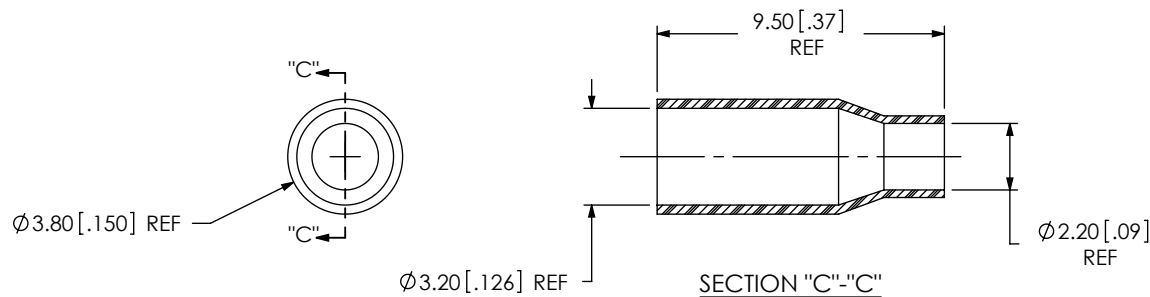
SAMTEC PART NUMBER	ITEM
MCX-INS-002	INSULATOR



SAMTEC PART NUMBER	ITEM
SUB-MCX-P-C-X-ST-CA1	SUB ASSEMBLY



SAMTEC PART NUMBER	ITEM
MCX-FER-003-X	INNER FERRULE



SAMTEC PART NUMBER	ITEM
MCX-FER-004-X	FERRULE

F:\DWG\SW\Exisprod\Assembly\RF\MCX\Mcx-p-c-xx-st-ca2\MCX-P-C-XX-ST-CA2.SLDDRW

PROPRIETARY NOTE

THIS DOCUMENT CONTAINS INFORMATION CONFIDENTIAL AND PROPRIETARY TO SAMTEC, INC. AND SHALL NOT BE REPRODUCED OR TRANSFERRED TO OTHER DOCUMENTS OR DISCLOSED TO OTHERS OR USED FOR ANY PURPOSE OTHER THAN THAT WHICH IT WAS OBTAINED WITHOUT THE EXPRESSED WRITTEN CONSENT OF SAMTEC, INC.

DO NOT SCALE DRAWING

SHEET SCALE: 4:1

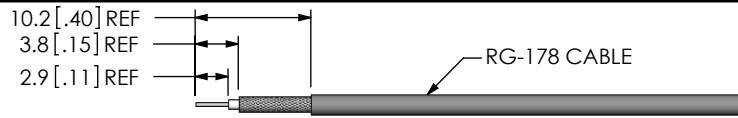
samtec

520 PARK EAST BLVD, NEW ALBANY, IN 47150
PHONE: 812-944-6733 FAX: 812-948-5047
e-Mail: info@SAMTEC.com code: 55322

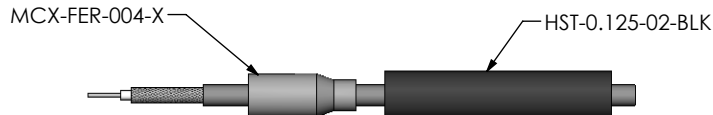
DESCRIPTION: MCX STRAIGHT CABLE PLUG, RG178- 50 OHM

DWG. NO. MCX-P-C-XX-ST-CA2

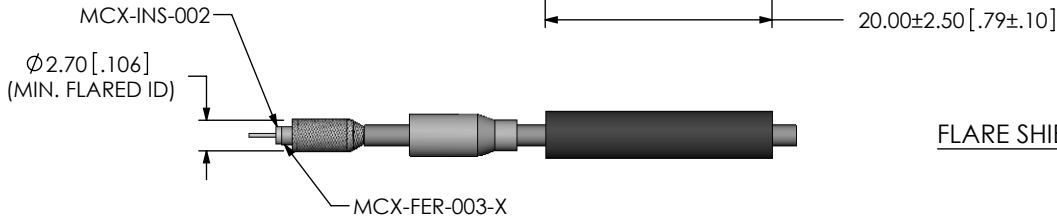
BY: R MUSSER 02/06/2008 SHEET 2 OF 3



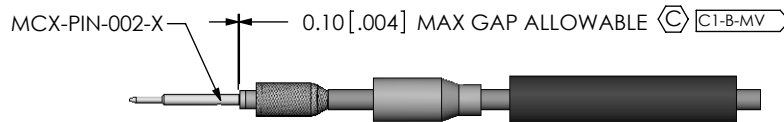
STRIP AND TIN INNER CONDUCTOR



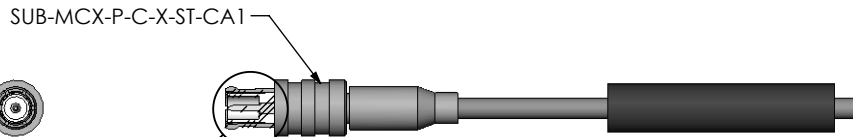
ADD HEAT SHRINK TUBE AND FERRULE



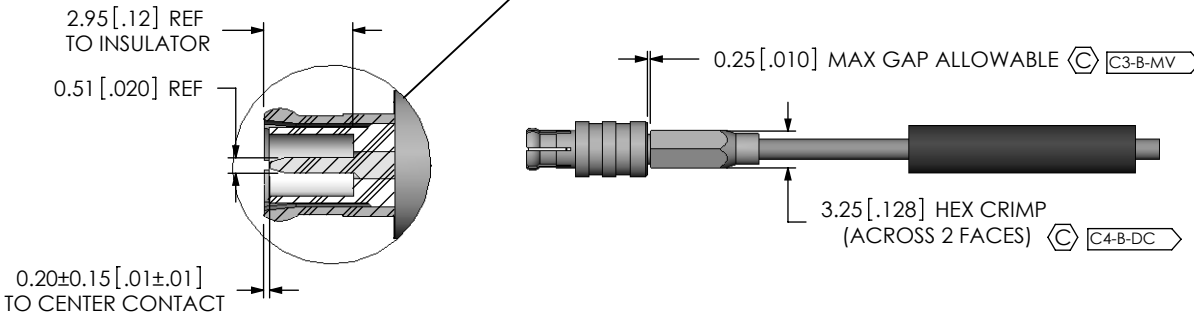
FLARE SHIELD AND ADD INNER FERRULE & INSULATOR



SOLDER SIGNAL PIN



ADD SUB-MCX-P-C-X-ST-CA1




CRIMP FERRULE
(USE RF CRIMP HAND TOOL # CAT-HT-126667-2 OR EQUIVALENT1)

DETAIL 'A'
SCALE 4 : 1

APPLY HEAT SHRINK TUBING

CRITICAL DIMENSION INSPECTION INSTRUCTION TABLE		
ASSEMBLY OPERATION	START-UP INSPECTION INSPECT CODE A	IN-PROCESS INSPECTION INSPECT CODE B
SOLDERING		C1
ASSEMBLY		C2
CRIMPING		C3, C4

F:\DWG\SW\Exisprod\Assembly\RF\MCX\Mcx-p-c-xx-st-ca2\MCX-P-C-XX-ST-CA2.SLDDRW

<p>PROPRIETARY NOTE THIS DOCUMENT CONTAINS INFORMATION CONFIDENTIAL AND PROPRIETARY TO SAMTEC, INC. AND SHALL NOT BE REPRODUCED OR TRANSFERRED TO OTHER DOCUMENTS OR DISCLOSED TO OTHERS OR USED FOR ANY PURPOSE OTHER THAN THAT WHICH IT WAS OBTAINED WITHOUT THE EXPRESSED WRITTEN CONSENT OF SAMTEC, INC.</p> <p>DO NOT SCALE DRAWING</p> <p>SHEET SCALE: 1:0.666667</p>		
	<p>DESCRIPTION: MCX STRAIGHT CABLE PLUG, RG178- 50 OHM</p>	
	<p>DWG. NO. MCX-P-C-XX-ST-CA2</p>	
	<p>BY: R MUSSER 02/06/2008</p>	<p>SHEET 3 OF 3</p>

520 PARK EAST BLVD, NEW ALBANY, IN 47150
PHONE: 812-944-6733 FAX: 812-948-5047
e-Mail: info@SAMTEC.com code: 55322