

DO NOT SCALE FROM THIS PRINT

DESIGNED & DIMENSIONED IN MILLIMETERS [INCHES]

MMCX-P-C-X-RA-CA2

GENDER  
-P: PLUG

TYPE  
-C: CABLE

TERMINATION  
-CA2: CABLE (RG178)

ORIENTATION  
-RA: RIGHT ANGLE

PLATING SPECIFICATION  
-H: HEAVY GOLD (SEE NOTE 7 & 8)  
(MCX-FER-005-F)  
(MMCX-CAP-001-F)  
(MMCX-INS-001)  
(SUB-MMCX-P-C-H-RA-CA2)

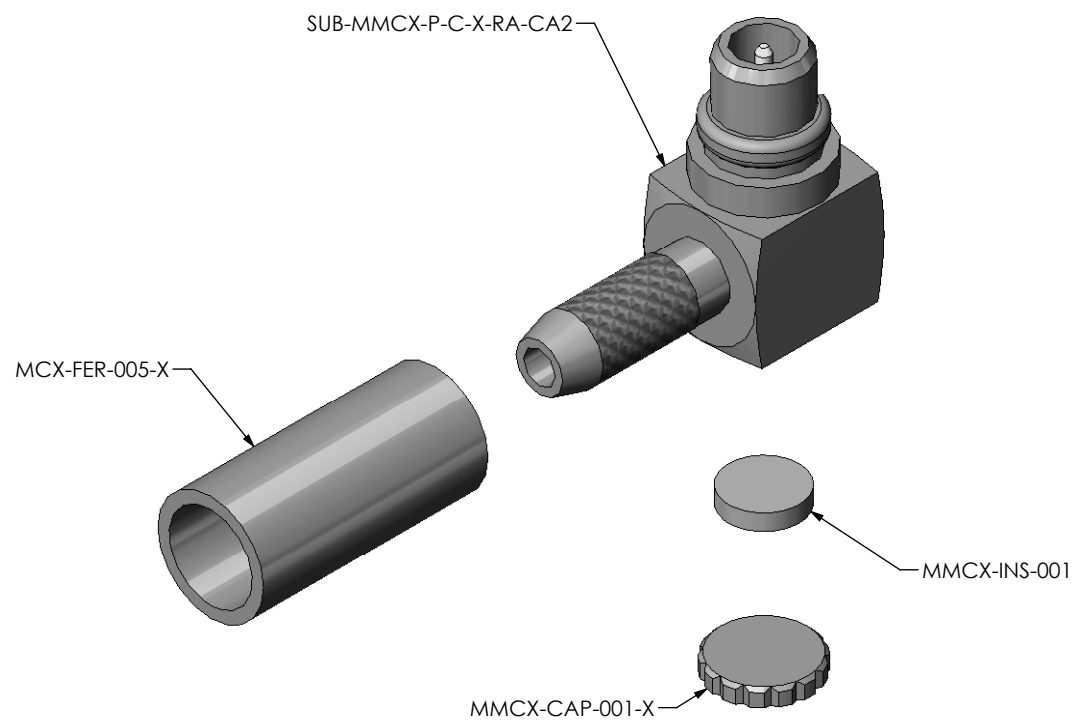
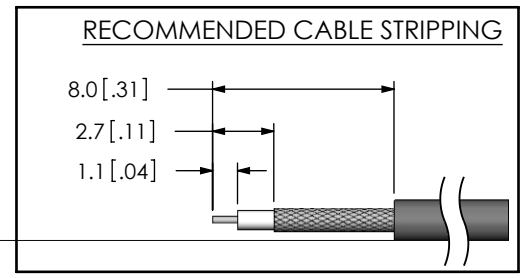


FIG.1  
MMCX-P-C-X-RA-CA2 SHOWN

- NOTES:
1. REPRESENTS A CRITICAL DIMENSION.
  2. CENTER CONTACT PUSHOUT FORCE: 26.69 N [6LB] MIN
  3. SEE SHEET 3 FOR TERMINATION INFORMATION.
  4. NOTE DELETED.
  5. PRODUCT TO BE PACKAGED PER PACKAGING STANDARD CO-HD-WI-3040-M.
  6. RoHS COMPLIANT.
  7. PLATING: -F: .000003" MIN GOLD OVER .000050" MIN NICKEL.  
-H: .000030" MIN GOLD OVER .000050" MIN NICKEL.
  8. ASSEMBLY PLATING DESIGNATIONS:  
-H: (CENTER CONTACT)-H  
(OUTER CONTACT) -F  
(REMAINING METAL PARTS) -F



**THIS PRODUCT MANUFACTURED WITH LEAD-FREE PROCESSING**

F:\DWG\MISC\MKTG\MMCX-P-C-X-RA-CA2-MKT.SLDDRW

UNLESS OTHERWISE SPECIFIED, DIMENSIONS ARE IN MILLIMETERS [INCHES]. TOLERANCES ARE:

DECIMALS	ANGLES
.X: ±0.3 [.01]	2°
.XX: ±0.13 [.005]	
.XXX: ±0.051 [.0020]	

**PROPRIETARY NOTE**  
THIS DOCUMENT CONTAINS INFORMATION CONFIDENTIAL AND PROPRIETARY TO SAMTEC, INC. AND SHALL NOT BE REPRODUCED OR TRANSFERRED TO OTHER DOCUMENTS OR DISCLOSED TO OTHERS OR USED FOR ANY PURPOSE OTHER THAN THAT WHICH IT WAS OBTAINED WITHOUT THE EXPRESSED WRITTEN CONSENT OF SAMTEC, INC.

520 PARK EAST BLVD., NEW ALBANY, IN 47150  
PHONE: 812-944-6733 FAX: 812-948-5047  
e-Mail: info@SAMTEC.com code 55322

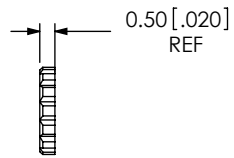
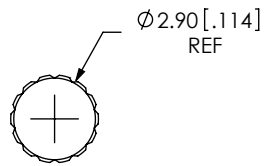
**MATERIAL:** DO NOT SCALE DRAWING SHEET SCALE: 1:0.166667

SHELL, FERRULE, CAP: BRASS  
CONTACT: BRASS  
DIELECTRIC: PTFE

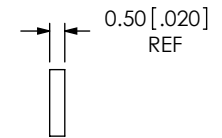
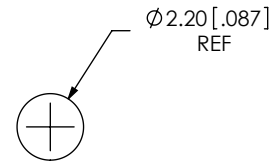
DESCRIPTION:  
MMCX R/A CABLE PLUG, RG178- 50 OHM

DWG. NO.  
**MMCX-P-C-X-RA-CA2**

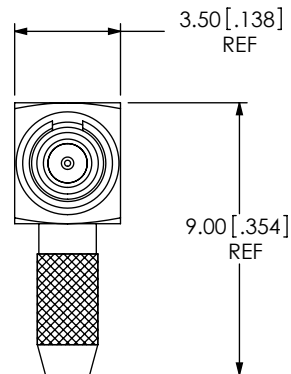
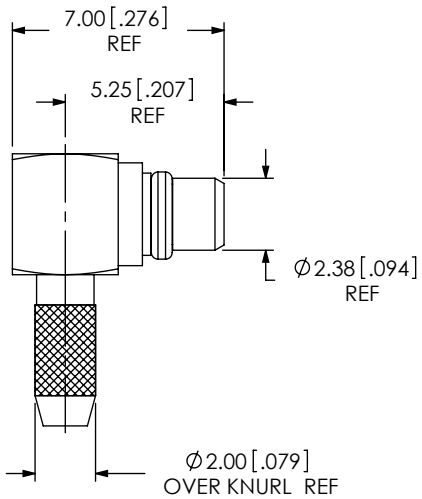
BY: R MUSSER 02/06/2008 SHEET 1 OF 3



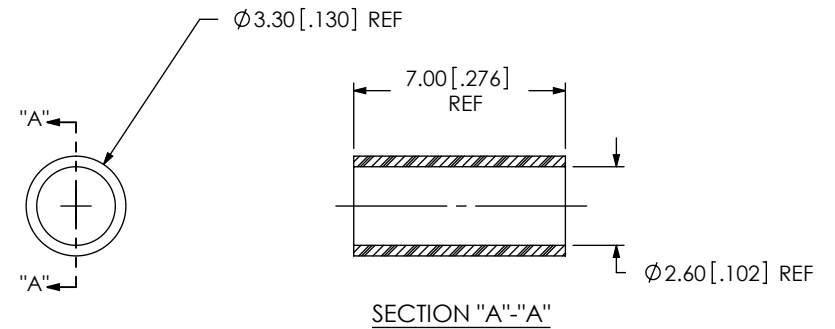
SAMTEC PART NUMBER	ITEM
MMCX-CAP-001-X	CAP



SAMTEC PART NUMBER	ITEM
MMCX-INS-001	INSULATOR



SAMTEC PART NUMBER	ITEM
SUB-MMCX-P-C-X-RA-CA2	SUB ASSEMBLY



SAMTEC PART NUMBER	ITEM
MCX-FER-005-X	OUTER FERRULE

F:\DWG\MISC\MKTG\MMCX-P-C-X-RA-CA2-MKT.SLDDRW

PROPRIETARY NOTE

THIS DOCUMENT CONTAINS INFORMATION CONFIDENTIAL AND PROPRIETARY TO SAMTEC, INC. AND SHALL NOT BE REPRODUCED OR TRANSFERRED TO OTHER DOCUMENTS OR DISCLOSED TO OTHERS OR USED FOR ANY PURPOSE OTHER THAN THAT WHICH IT WAS OBTAINED WITHOUT THE EXPRESSED WRITTEN CONSENT OF SAMTEC, INC.

DO NOT SCALE DRAWING

SHEET SCALE: 4:1

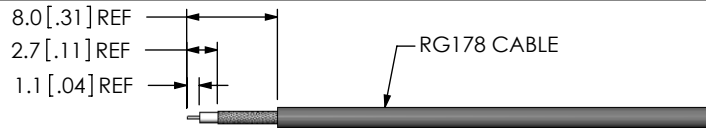


520 PARK EAST BLVD, NEW ALBANY, IN 47150  
PHONE: 812-944-6733 FAX: 812-948-5047  
e-Mail: info@SAMTEC.com code 55322

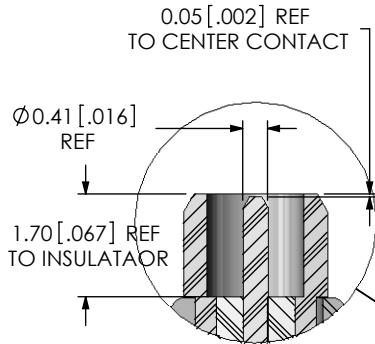
DESCRIPTION:  
MMCX R/A CABLE PLUG, RG178- 50 OHM

DWG. NO.  
MMCX-P-C-X-RA-CA2

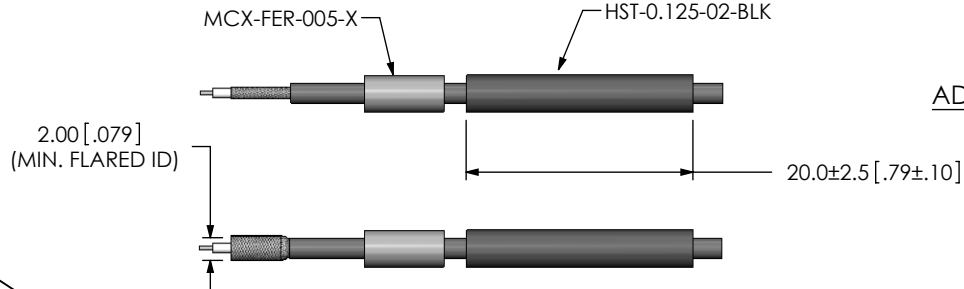
BY: R MUSSER 02/06/2008 SHEET 2 OF 3



STRIP AND TIN INNER CONDUCTOR

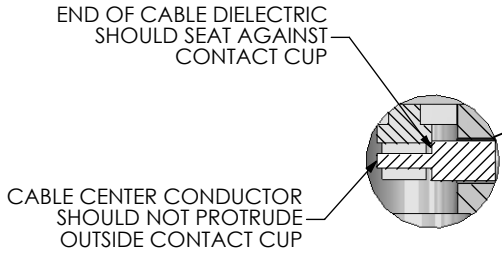


DETAIL 'A'  
SCALE 8 : 1

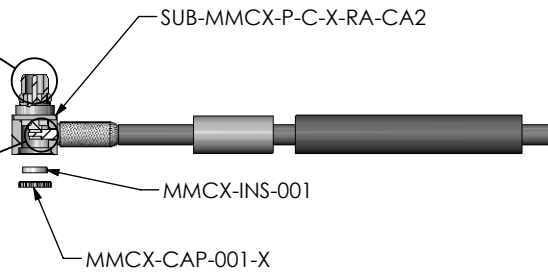


ADD HEAT SHRINK TUBE AND FERRULE

FLARE SHIELD

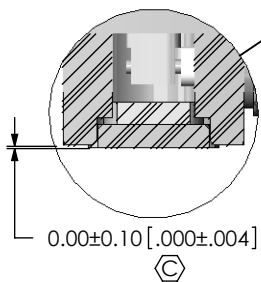


DETAIL 'B'  
SCALE 6 : 1

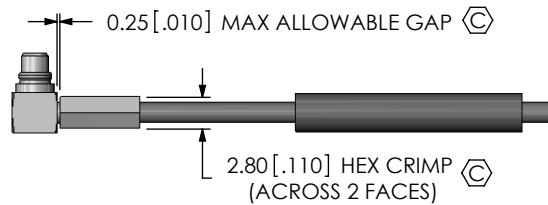


ADD SUB-MMCX-P-C-X-RA-CA2, SOLDER SIGNAL PIN,

INSERT INSULATOR AND CAP



DETAIL 'E'  
SCALE 6 : 1



CRIMP FERRULE  
(USE RF CRIMP HAND TOOL # CAT-HT-126667-21 OR EQUIVALENT)



APPLY HEAT SHRINK TUBING

F:\DWG\MISC\MKTG\MMCX-P-C-X-RA-CA2-MKT.SLDDRW

**PROPRIETARY NOTE**

THIS DOCUMENT CONTAINS INFORMATION CONFIDENTIAL AND PROPRIETARY TO SAMTEC, INC. AND SHALL NOT BE REPRODUCED OR TRANSFERRED TO OTHER DOCUMENTS OR DISCLOSED TO OTHERS OR USED FOR ANY PURPOSE OTHER THAN THAT WHICH IT WAS OBTAINED WITHOUT THE EXPRESSED WRITTEN CONSENT OF SAMTEC, INC.

DO NOT SCALE DRAWING

SHEET SCALE: 1:0.666667



520 PARK EAST BLVD, NEW ALBANY, IN 47150  
PHONE: 812-944-6733 FAX: 812-948-5047  
e-Mail info@SAMTEC.com code 55322

DESCRIPTION: MMCX R/A CABLE PLUG, RG178- 50 OHM

DWG. NO. **MMCX-P-C-X-RA-CA2**

BY: R MUSSER 02/06/2008 SHEET 3 OF 3