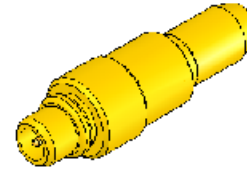
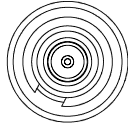


NOTES:

1. Ⓢ REPRESENTS A CRITICAL DIMENSION.
2. SAMPLE ORDERS TO BE PACKAGED IN KIT FORM, ORDERS TO BE PACKAGED IN BULK COMPONENTS.

DO NOT SCALE FROM THIS PRINT



MMCX-P-C-X-ST-CA1

GENDER
-P: PLUG

TYPE
-C: CABLE

PLATING SPECIFICATION
-H: HEAVY GOLD

TERMINATION
-CA1: CABLE
(RG174 OR RG316)

ORIENTATION
-ST: STRAIGHT

DESIGNED & DIMENSIONED
IN MILLIMETERS [INCHES]

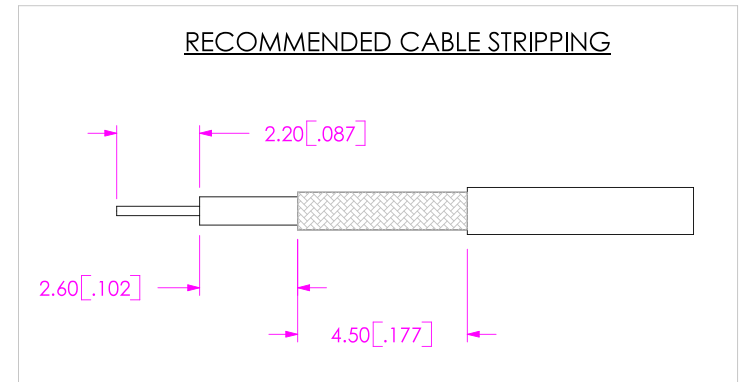
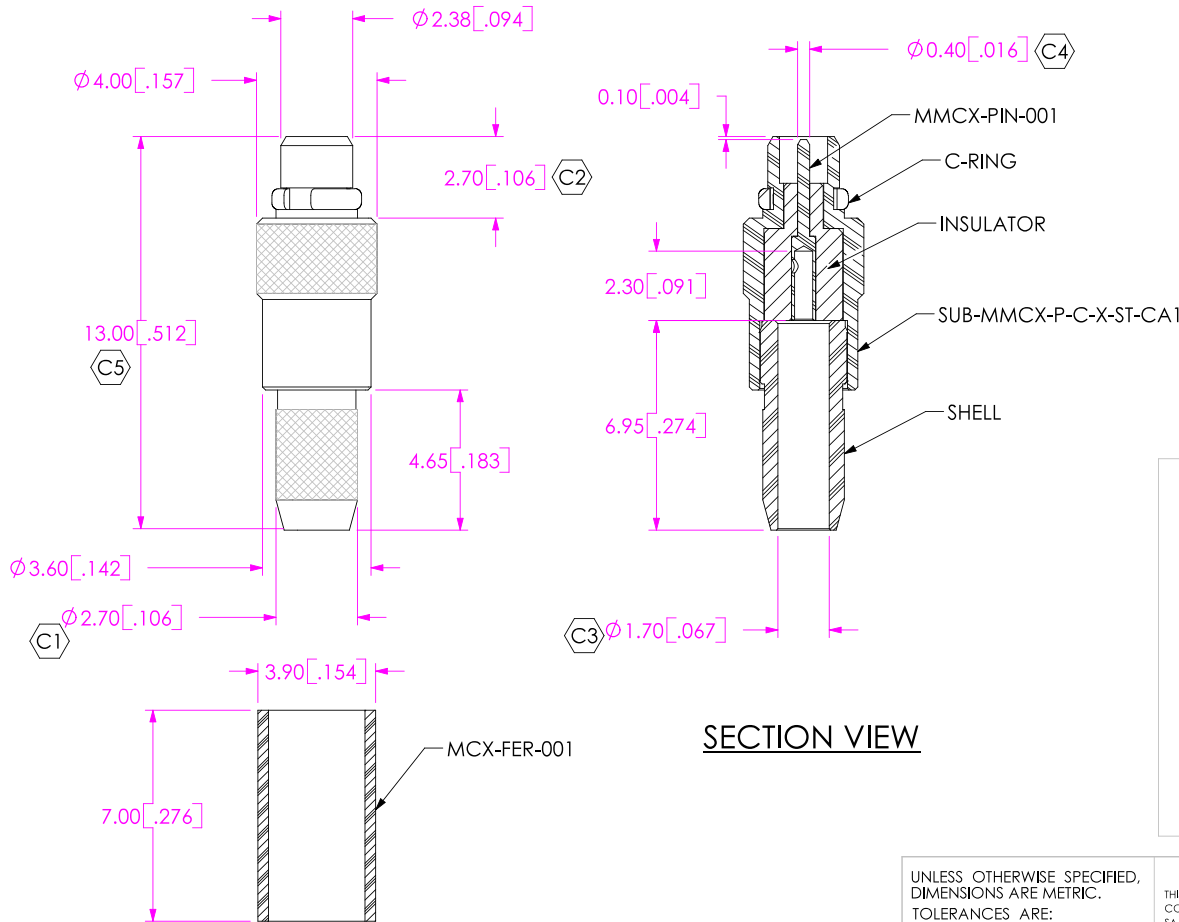


TABLE 1: MATERIAL

SAMTEC PART No.	ITEM	MATERIAL	FINISH
MMCX-PIN-001	PIN	BRASS C3602B	.75mm [.000030in] GOLD OVER 1.25mm [.000050in] NICKEL
MCX-FER-001	FERRULE	BRASS C26000	.08mm [.000003in] GOLD OVER 1.25mm [.000050in] NICKEL
	C-RING	BeCu C17300	.08mm [.000003in] GOLD OVER 1.25mm [.000050in] NICKEL
SUB-MMCX-P-C-X-ST-CA1	INSULATOR	PTFE TEFLON	-----
	SHELL	BRASS C3604B	.13mm [.000005in] GOLD OVER 1.25mm [.000050in] NICKEL

UNLESS OTHERWISE SPECIFIED, DIMENSIONS ARE METRIC. TOLERANCES ARE:
 DECIMALS ANGLES
 .XX: $\pm .10$ [.004] 5°
 .XXX: $\pm .050$ [.002]

PROPRIETARY NOTE
 THIS DOCUMENT CONTAINS INFORMATION CONFIDENTIAL AND PROPRIETARY TO SAMTEC, INC. AND SHALL NOT BE REPRODUCED OR TRANSFERRED TO OTHER DOCUMENTS OR DISCLOSED TO OTHERS OR USED FOR ANY PURPOSE OTHER THAN THAT WHICH IT WAS OBTAINED WITHOUT THE EXPRESSED WRITTEN CONSENT OF SAMTEC, INC.

SAMTEC

520 PARK EAST BLVD, NEW ALBANY, IN 47150
 PHONE: 812.944.6733 FAX: 812.948.5047
 e-Mail: INFO@SAMTEC.COM CODE: 55322

MATERIAL: DO NOT SCALE DRAWING SHEET SCALE: 5:1
 SEE TABLE 1

DESCRIPTION: MMCX STRAIGHT, PLUG- 50 OHM

DWG. NO. **MMCX-P-C-X-ST-CA1**

BY: D PURVIS 8/10/2004 SHEET 1 OF 1