

DESIGNED & DIMENSIONED
IN MILLIMETERS[INCHES]

NTPE-P-C-XX-ST-CA4

GENDER
-P: PLUG

TYPE
-C: CABLE

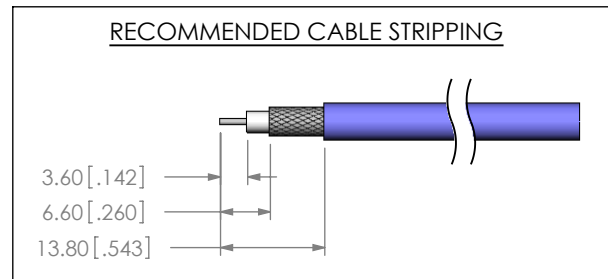
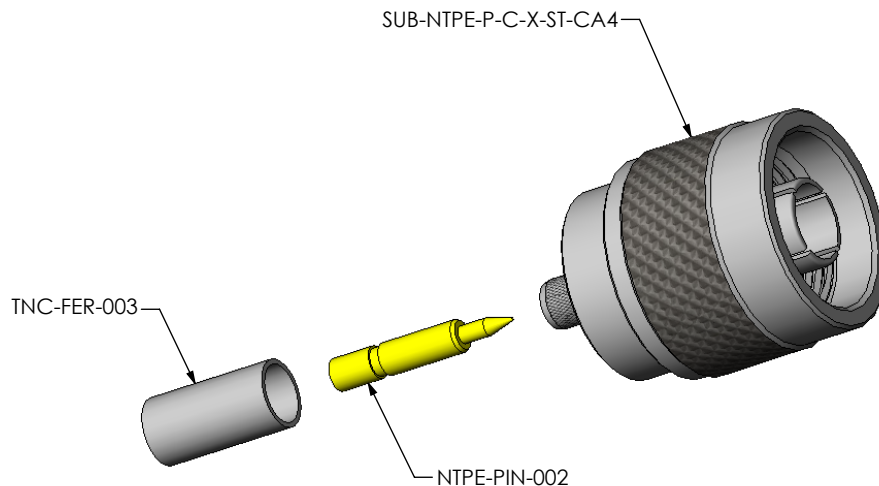
TERMINATION
-CA4: CABLE
(RG058)

ORIENTATION
-ST: STRAIGHT

PLATING SPECIFICATION

-HN: HEAVY GOLD/NICKEL
(CENTER CONTACT: PIN)
0.00076[.000030] GOLD OVER .00127[.000050] NICKEL
(SUB-NTPE, FERRULE)
.00254[.000100] NICKEL

DO NOT
SCALE FROM
THIS PRINT



NOTES:

1. $\text{\textcircled{C}}$ REPRESENTS A CRITICAL DIMENSION.
2. SEE SHEET 3 FOR TERMINATION INFORMATION.
3. COMPONENTS TO BE SHIPPED UNASSEMBLED.
4. SAMPLE ORDERS: TO BE PACKAGED IN INDIVIDUAL KIT FORM,
PRODUCTION ORDERS: EACH COMPONENT TO BE BULK PACKAGED.
5. RoHS COMPLIANT.

F:\DWG\MISC\MKTG\NTPE-P-C-XX-ST-CA4-MKT.SLDDRW

UNLESS OTHERWISE SPECIFIED,
DIMENSIONS ARE IN MILLIMETERS.
TOLERANCES ARE:
DECIMALS ANGLES
.X: ± 0.3 [.01] 2°
.XX: ± 0.13 [.005]
.XXX: ± 0.051 [.0020]

PROPRIETARY NOTE

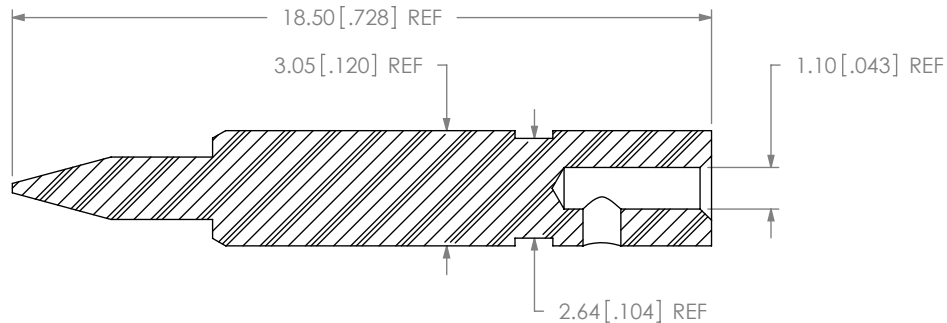
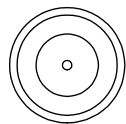
THIS DOCUMENT CONTAINS INFORMATION
CONFIDENTIAL AND PROPRIETARY TO
SAMTEC, INC. AND SHALL NOT BE REPRODUCED
OR TRANSFERRED TO OTHER DOCUMENTS OR
DISCLOSED TO OTHERS OR USED FOR ANY
PURPOSE OTHER THAN THAT WHICH IT WAS
OBTAINED WITHOUT THE EXPRESSED WRITTEN
CONSENT OF SAMTEC, INC.



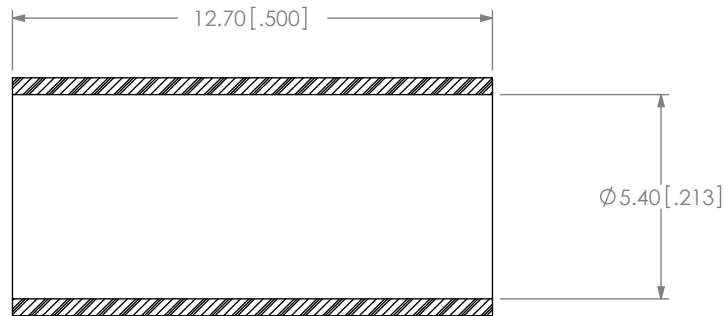
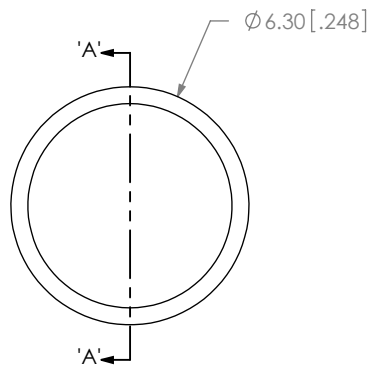
520 PARK EAST BLVD, NEW ALBANY, IN 47150
PHONE: 812-944-6733 FAX: 812-948-5047
e-Mail: info@SAMTEC.com code: 55322

MATERIAL: DO NOT SCALE DRAWING SHEET SCALE: 1.5:1
SEE BOM TABLE

DESCRIPTION:	N TYPE STRAIGHT PLUG
DWG. NO.	NTPE-P-C-XX-ST-CA4
BY: R MUSSER	12/19/2007 SHEET 1 OF 3

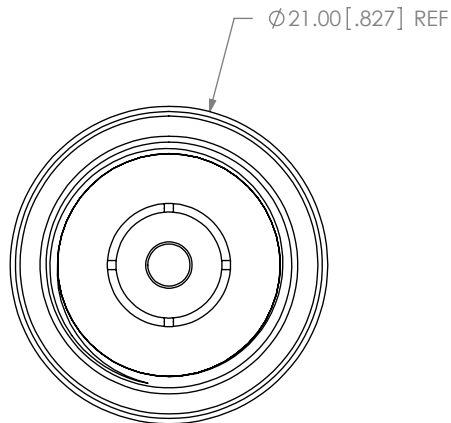
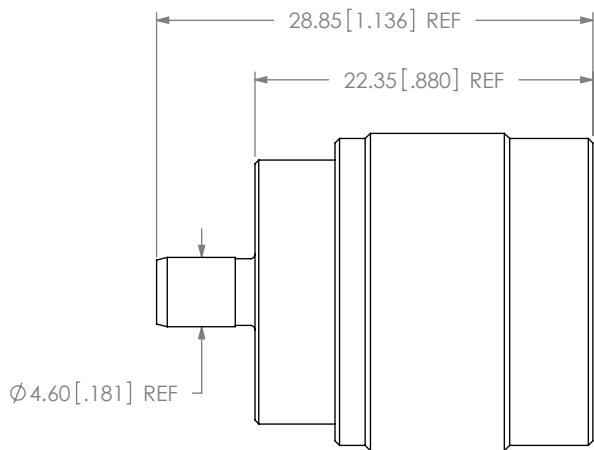


SAMTEC PART NUMBER	ITEM
NTPE-PIN-002	PIN



SECTION 'A'-'A'
SCALE 5:1

SAMTEC PART NUMBER	ITEM
TNC-FER-003	FERRULE



SAMTEC PART NUMBER	ITEM
SUB-NTPE-P-C-X-ST-CA4	SUB ASSEMBLY

F:\DWG\MISC\MKTG\NTPE-P-C-XX-ST-CA4-MKT.SLDDRW

PROPRIETARY NOTE
THIS DOCUMENT CONTAINS INFORMATION CONFIDENTIAL AND PROPRIETARY TO SAMTEC, INC. AND SHALL NOT BE REPRODUCED OR TRANSFERRED TO OTHER DOCUMENTS OR DISCLOSED TO OTHERS OR USED FOR ANY PURPOSE OTHER THAN THAT WHICH IT WAS OBTAINED WITHOUT THE EXPRESSED WRITTEN CONSENT OF SAMTEC, INC.



520 PARK EAST BLVD, NEW ALBANY, IN 47150
PHONE: 812-944-6733 FAX: 812-948-5047
e-Mail: info@SAMTEC.com code: 55322

DO NOT SCALE DRAWING

SHEET SCALE: 2:1

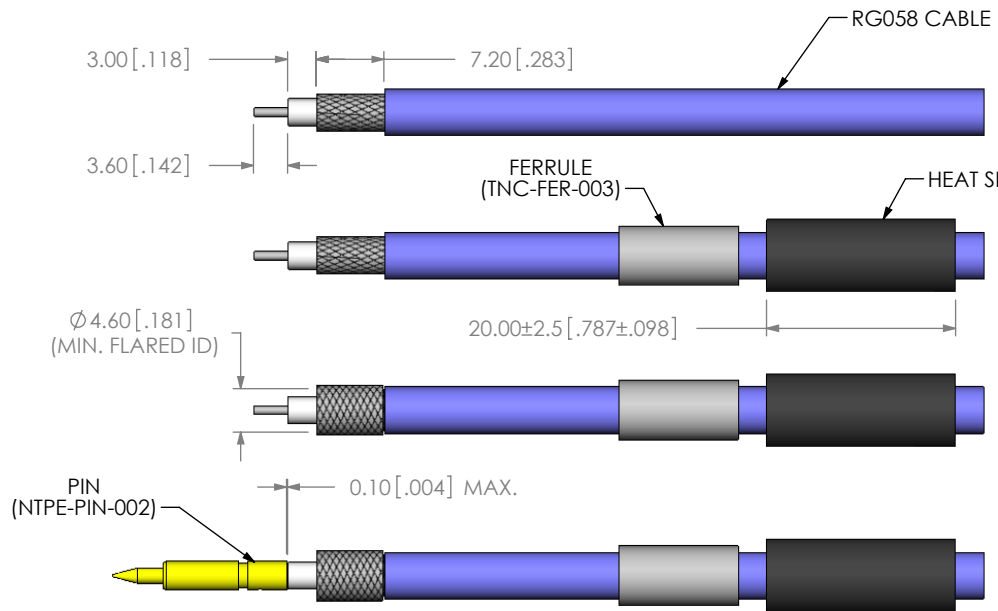
DESCRIPTION:

N TYPE STRAIGHT PLUG

DWG. NO.

NTPE-P-C-XX-ST-CA4

BY: R MUSSER 12/19/2007 SHEET 2 OF 3

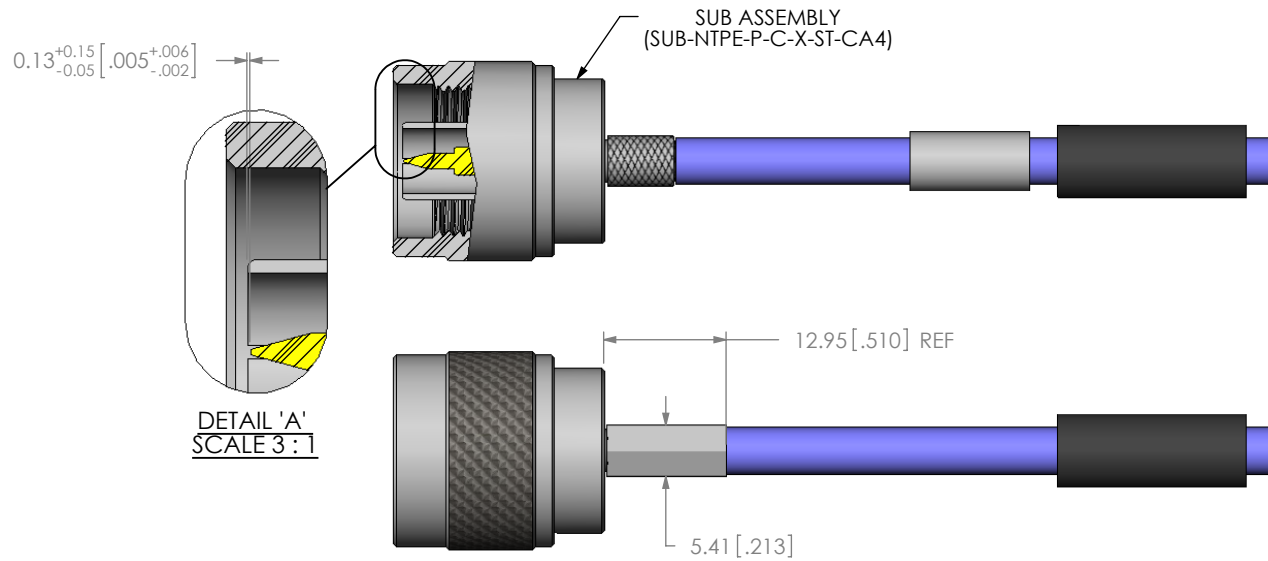


STRIP AND TIN INNER CONDUCTOR

ADD HEAT SHRINK TUBE AND FERRULE

FLARE SHIELD

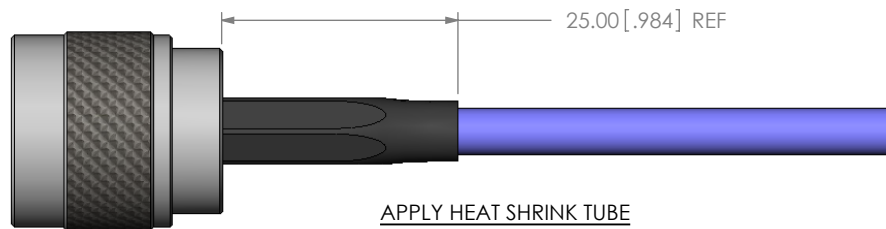
SOLDER SIGNAL PIN



DETAIL 'A'
SCALE 3:1

ADD SUB-NTPE-P-C-X-ST-CA4

CRIMP FERRULE
(USE RF CRIMP HAND TOOL #CAT-HT-126667-21)



APPLY HEAT SHRINK TUBE

F:\DWG\MISC\MKTG\NTPE-P-C-XX-ST-CA4-MKT.SLDRW

PROPRIETARY NOTE
THIS DOCUMENT CONTAINS INFORMATION CONFIDENTIAL AND PROPRIETARY TO SAMTEC, INC. AND SHALL NOT BE REPRODUCED OR TRANSFERRED TO OTHER DOCUMENTS OR DISCLOSED TO OTHERS OR USED FOR ANY PURPOSE OTHER THAN THAT WHICH IT WAS OBTAINED WITHOUT THE EXPRESSED WRITTEN CONSENT OF SAMTEC, INC.



520 PARK EAST BLVD, NEW ALBANY, IN 47150
PHONE: 812-944-6733 FAX: 812-948-5047
e-Mail: info@SAMTEC.com code: 55322

DO NOT SCALE DRAWING

SHEET SCALE: 1.25:1

DESCRIPTION:

N TYPE STRAIGHT PLUG

DWG. NO.

NTPE-P-C-XX-ST-CA4

BY: R MUSSER

12/19/2007

SHEET 3 OF 3