

DO NOT SCALE FROM THIS PRINT

DESIGNED & DIMENSIONED IN MILLIMETERS [INCHES]

SMA-J-C-X-ST-BH1

GENDER
-J: JACK

TYPE
-C: CABLE

TERMINATION
-BH: BULKHEAD 1 (RG174 OR RG316)

ORIENTATION
-ST: STRAIGHT

PLATING SPECIFICATION
-H: HEAVY GOLD (SEE NOTES 7 & 8)
(SMA-FER-001-F)
(SMA-SKT-001-H)
(SUB-SMA-J-C-F-ST-BH1)
(SMA-LWAS-001-F)
(SMA-NUT-001-F)

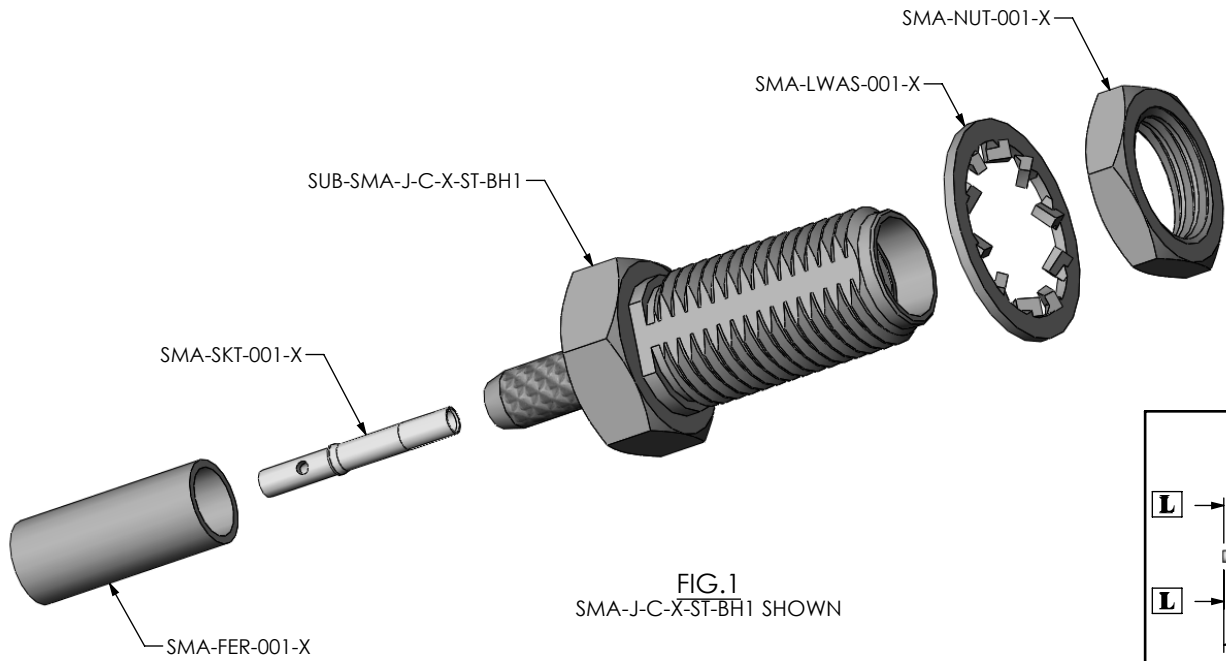
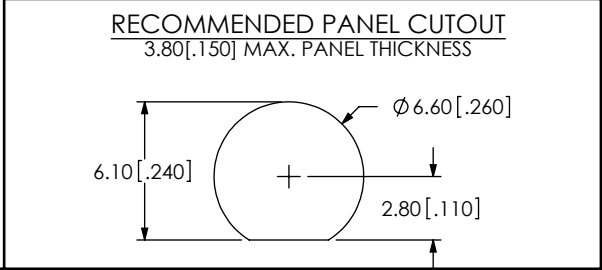
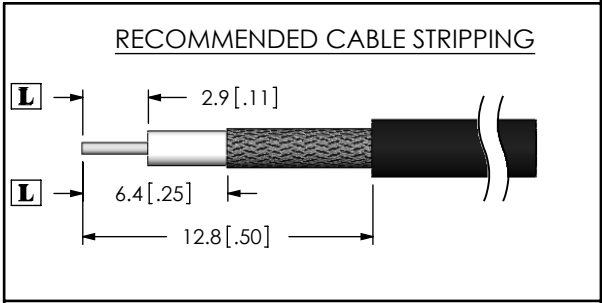


FIG.1
SMA-J-C-X-ST-BH1 SHOWN



- NOTES:
1. $\text{\textcircled{C}}$ REPRESENTS A CRITICAL DIMENSION.
 2. CENTER CONTACT PUSHOUT FORCE = 26.69 N [6 LB] MIN.
 3. SEE SHEET 3 FOR TERMINATION INFORMATION.
 4. DELETE
 5. PRODUCT TO BE PACKAGED PER PACKAGING STANDARD CO-HD-WI-3040-M
 6. RoHS COMPLIANT.
 7. PLATING: -F: .000003" MIN GOLD OVER .000050" MIN NICKEL.
-H: .000030" MIN GOLD OVER .000050" MIN NICKEL.
 8. ASSEMBLY PLATING DESIGNATIONS:
-H: (CENTER CONTACT)-H
(OUTER CONTACT) -F
(REMAINING METAL PARTS) -F

THIS PRODUCT MANUFACTURED WITH LEAD-FREE PROCESSING

UNLESS OTHERWISE SPECIFIED, DIMENSIONS ARE IN MILLIMETERS [INCHES]. TOLERANCES ARE:

DECIMALS	ANGLES
X.X: ± 0.3 [.01]	2°
X.XX: ± 0.13 [.005]	
X.XXX: ± 0.051 [.0020]	

PROPRIETARY NOTE
THIS DOCUMENT CONTAINS INFORMATION CONFIDENTIAL AND PROPRIETARY TO SAMTEC, INC. AND SHALL NOT BE REPRODUCED OR TRANSFERRED TO OTHER DOCUMENTS OR DISCLOSED TO OTHERS OR USED FOR ANY PURPOSE OTHER THAN THAT WHICH IT WAS OBTAINED WITHOUT THE EXPRESSED WRITTEN CONSENT OF SAMTEC, INC.

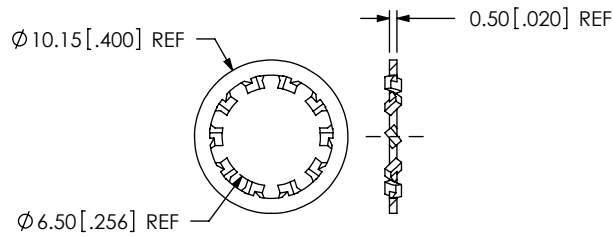


520 PARK EAST BLVD, NEW ALBANY, IN 47150
PHONE: 812-944-6733 FAX: 812-948-5047
e-Mail: info@SAMTEC.com code: 55322

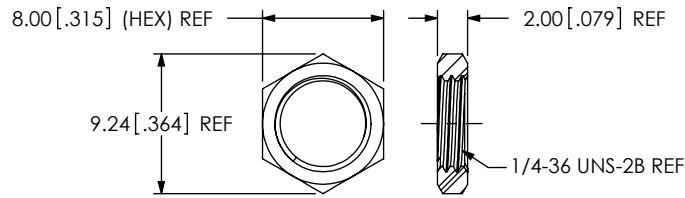
MATERIAL: DO NOT SCALE DRAWING SHEET SCALE: 4:1
SHELL, FERRULE, NUT, WASHER: BRASS
CONTACT: COPPER ALLOY
DIELECTRIC: PTFE

DESCRIPTION: SMA STR JACK BULKHEAD, RG174 & RG316- 50 OHM
DWG. NO. **SMA-J-C-X-ST-BH1**

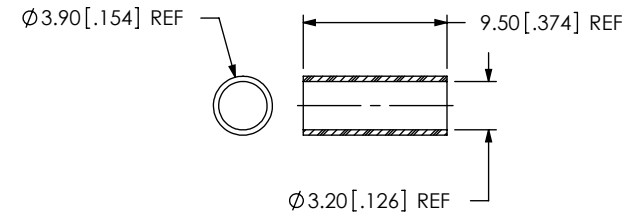
BY: R MUSSER 01/14/2008 SHEET 1 OF 3



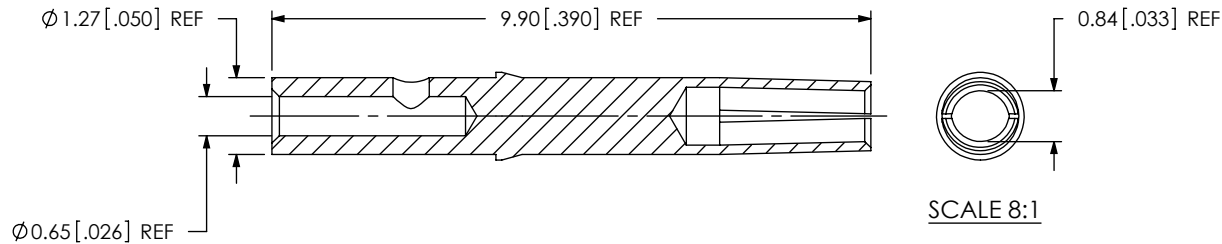
SAMTEC PART NUMBER	ITEM
SMA-LW-AS-001-X	LOCK WASHER



SAMTEC PART NUMBER	ITEM
SMA-NUT-001-X	HEX NUT

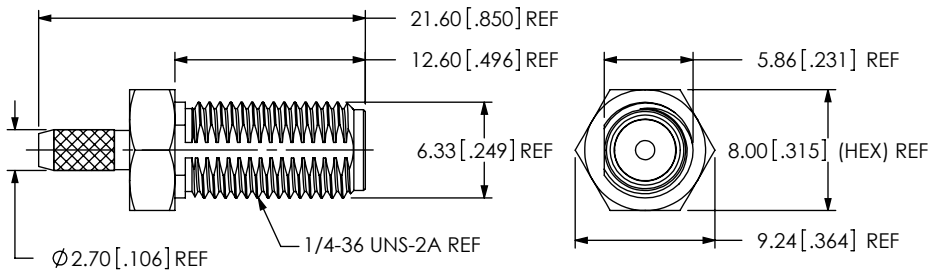


SAMTEC PART NUMBER	ITEM
SMA-FER-001-X	OUTER FERRULE



SCALE 8:1

SAMTEC PART NUMBER	ITEM
SMA-SKT-001-X	PIN



SAMTEC PART NUMBER	ITEM
SUB-SMA-J-C-X-ST-BH1	SUB ASSEMBLY

PROPRIETARY NOTE
 THIS DOCUMENT CONTAINS INFORMATION CONFIDENTIAL AND PROPRIETARY TO SAMTEC, INC. AND SHALL NOT BE REPRODUCED OR TRANSFERRED TO OTHER DOCUMENTS OR DISCLOSED TO OTHERS OR USED FOR ANY PURPOSE OTHER THAN THAT WHICH IT WAS OBTAINED WITHOUT THE EXPRESSED WRITTEN CONSENT OF SAMTEC, INC.

DO NOT SCALE DRAWING

SHEET SCALE: 2:1

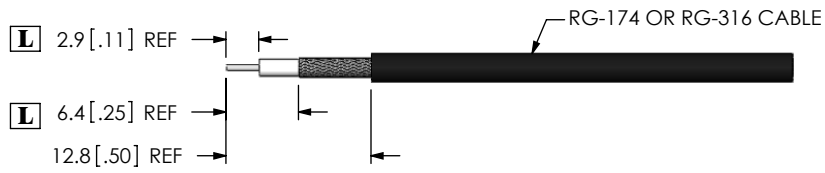


520 PARK EAST BLVD, NEW ALBANY, IN 47150
 PHONE: 812-944-6733 FAX: 812-948-5047
 e-Mail: info@SAMTEC.com code: 55322

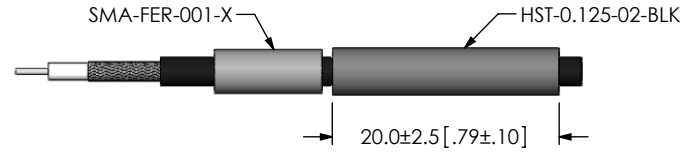
DESCRIPTION:
 SMA STR JACK BULKHEAD, RG174 & RG316- 50 OHM

DWG. NO. **SMA-J-C-X-ST-BH1**

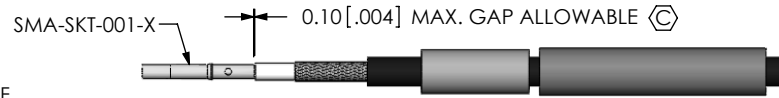
BY: R MUSSER 01/14/2008 SHEET 2 OF 3



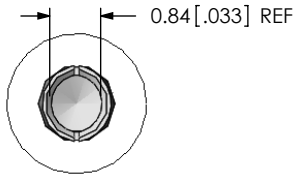
STRIP AND TIN INNER CONDUCTOR



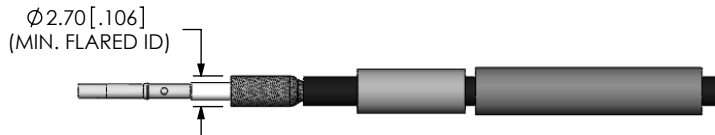
ADD HEAT SHRINK TUBE AND FERRULE



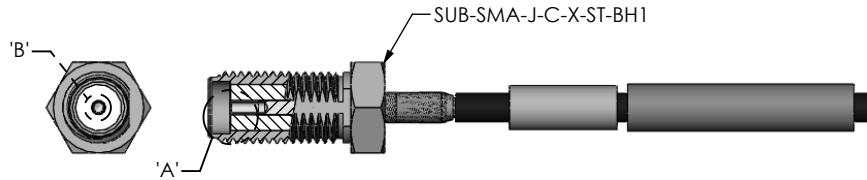
SOLDER SIGNAL SOCKET



DETAIL 'B'
SCALE 8:1

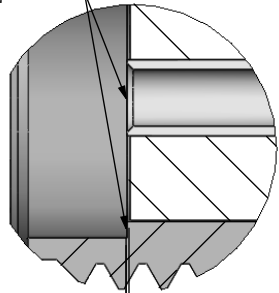


FLARE SHIELD



ADD SUB-SMA-J-C-X-ST-BH1

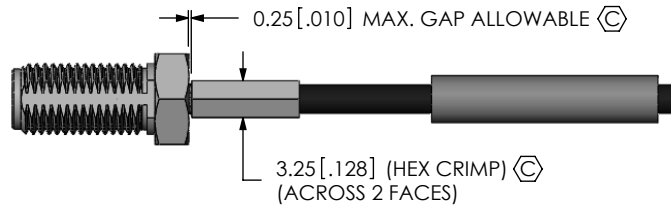
TIP OF CONTACT TO BE FLUSH WITH REFERENCE PLANE OR RECESSED 0.10 [.004] MAX.



0.05 [.002] REF (TO INSULATOR)

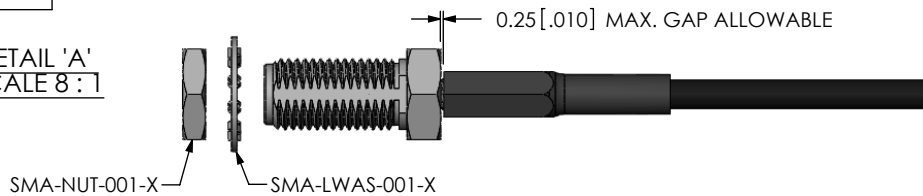
REFERENCE PLANE

DETAIL 'A'
SCALE 8:1



CRIMP FERRULE

(USE RF CRIMP HAND TOOL # CAT-HT-T26667-21 OR EQUIVALENT)



APPLY HEAT SHRINK TUBING

PROPRIETARY NOTE

THIS DOCUMENT CONTAINS INFORMATION CONFIDENTIAL AND PROPRIETARY TO SAMTEC, INC. AND SHALL NOT BE REPRODUCED OR TRANSFERRED TO OTHER DOCUMENTS OR DISCLOSED TO OTHERS OR USED FOR ANY PURPOSE OTHER THAN THAT WHICH IT WAS OBTAINED WITHOUT THE EXPRESSED WRITTEN CONSENT OF SAMTEC, INC.

DO NOT SCALE DRAWING

SHEET SCALE: 1.5:1



520 PARK EAST BLVD, NEW ALBANY, IN 47150
PHONE: 812-944-6733 FAX: 812-948-5047
e-Mail: info@SAMTEC.com code: 55322

DESCRIPTION:
SMA STR JACK BULKHEAD, RG174 & RG316- 50 OHM

DWG. NO. SMA-J-C-X-ST-BH1

BY: R MUSSER 01/14/2008 SHEET 3 OF 3