

THIS PRODUCT MANUFACTURED WITH LEAD-FREE PROCESSING

DESIGNED & DIMENSIONED IN MILLIMETERS [INCHES]

SMA-J-C-X-ST-SB1

GENDER
-J: JACK

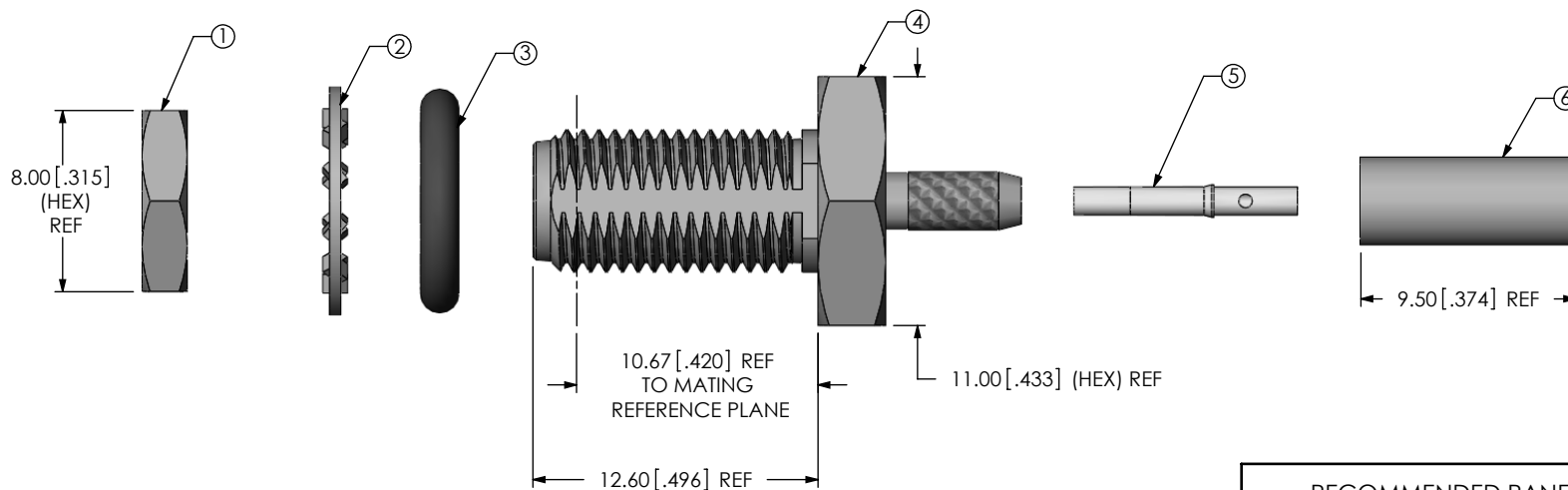
TYPE
-C: CABLE

TERMINATION
-SB1: SEALED BULKHEAD (RG174 OR RG316)

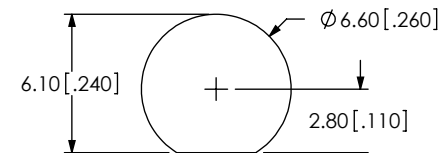
ORIENTATION
-ST: STRAIGHT

PLATING SPECIFICATION
-H: 30µ" GOLD CENTER CONTACT, 3µ" GOLD OUTER CONTACT (SEE TABLE 1)

TABLE 1		
ITEM	COMPONENT	-H
1	HEX NUT	SMA-NUT-001-F
2	LOCK WASHER	SMA-LWAS-001-F
3	GASKET	SMA-GKT-002
4	SUB ASSEMBLY	SUB-SMA-J-C-F-ST-SB1
5	SKT	SMA-SKT-001-H
6	FERRULE	SMA-FER-001-F



RECOMMENDED PANEL CUTOUT
3.80 [.150] MAX. PANEL THICKNESS



NOTES:

- ① REPRESENTS A CRITICAL DIMENSION.
- NOTE DELETED.
- NOTE DELETED.
- DEL NOTE 4.
- PRODUCT TO BE PACKAGED PER PACKAGING STANDARD CO-HD-WI-3040-M.
- NOTE DELETED.
- NOTE DELETED.
- NOTE DELETED.

UNLESS OTHERWISE SPECIFIED, DIMENSIONS ARE IN MILLIMETERS [INCHES]. TOLERANCES ARE:
 DECIMALS ANGLES
 .X: ±0.3 [.01] 5°
 .XX: ±0.13 [.005]
 .XXX: ±0.051 [.0020]

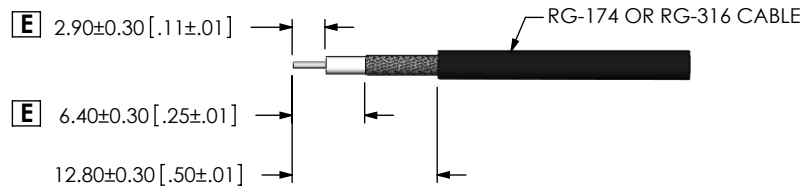
PROPRIETARY NOTE
 THIS DOCUMENT CONTAINS INFORMATION CONFIDENTIAL AND PROPRIETARY TO SAMTEC, INC. AND SHALL NOT BE REPRODUCED OR TRANSFERRED TO OTHER DOCUMENTS OR DISCLOSED TO OTHERS OR USED FOR ANY PURPOSE OTHER THAN THAT WHICH IT WAS OBTAINED WITHOUT THE EXPRESSED WRITTEN CONSENT OF SAMTEC, INC.

samtec
 520 PARK EAST BLVD, NEW ALBANY, IN 47150
 PHONE: 812-944-6733 FAX: 812-948-5047
 e-Mail: info@SAMTEC.com code: 55322

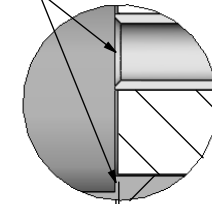
MATERIAL: DO NOT SCALE DRAWING SHEET SCALE: 4:1
 SHELL, FERRULE, NUT, WASHER: BRASS
 CONTACT: COPPER ALLOY
 DIELECTRIC: PTFE
 GASKET: SILICONE

DESCRIPTION:
 SMA STR JACK S BULKHEAD, RG174 & RG316- 50 OHM
 DWG. NO. **SMA-J-C-X-ST-SB1**

REVISION E



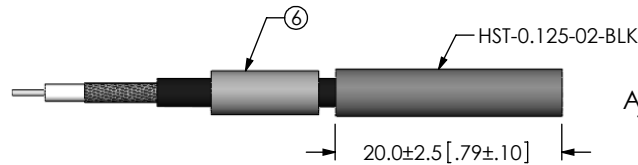
TIP OF CONTACT TO BE FLUSH
WITH REFERENCE PLANE
OR RECESSED 0.10[.004] MAX.



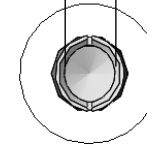
0.05 [.002] REF
(TO INSULATOR)

REFERENCE PLANE

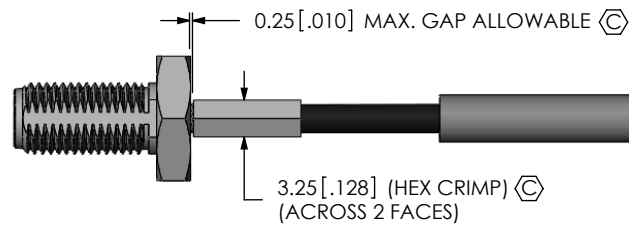
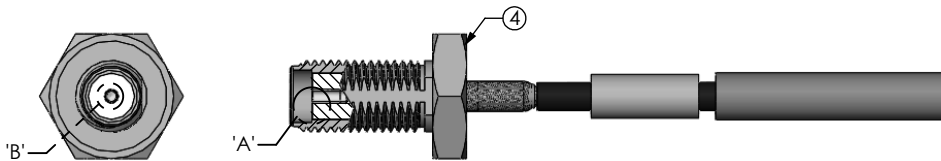
DETAIL 'A'
SCALE 8:1



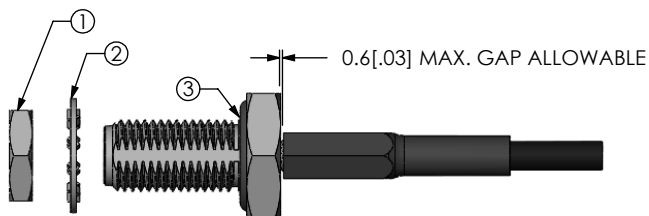
0.84 [.033] REF



DETAIL 'B'
SCALE 8:1



F:\DWG\MISC\MKTG\SMA-J-C-X-ST-SB1-MKT.SLDDRW



PROPRIETARY NOTE

THIS DOCUMENT CONTAINS INFORMATION
CONFIDENTIAL AND PROPRIETARY TO
SAMTEC, INC. AND SHALL NOT BE REPRODUCED
OR TRANSFERRED TO OTHER DOCUMENTS OR
DISCLOSED TO OTHERS OR USED FOR ANY
PURPOSE OTHER THAN THAT WHICH IT WAS
OBTAINED WITHOUT THE EXPRESSED WRITTEN
CONSENT OF SAMTEC, INC.

DO NOT SCALE DRAWING

SHEET SCALE: 3:2



520 PARK EAST BLVD, NEW ALBANY, IN 47150
PHONE: 812-944-6733 FAX: 812-948-5047
e-Mail: info@SAMTEC.com code: 55322

DESCRIPTION:
SMA STR JACK S BULKHEAD, RG174 & RG316- 50 OHM

DWG. NO.
SMA-J-C-X-ST-SB1

BY: R MUSSER 04/05/2009 SHEET 2 OF 2