

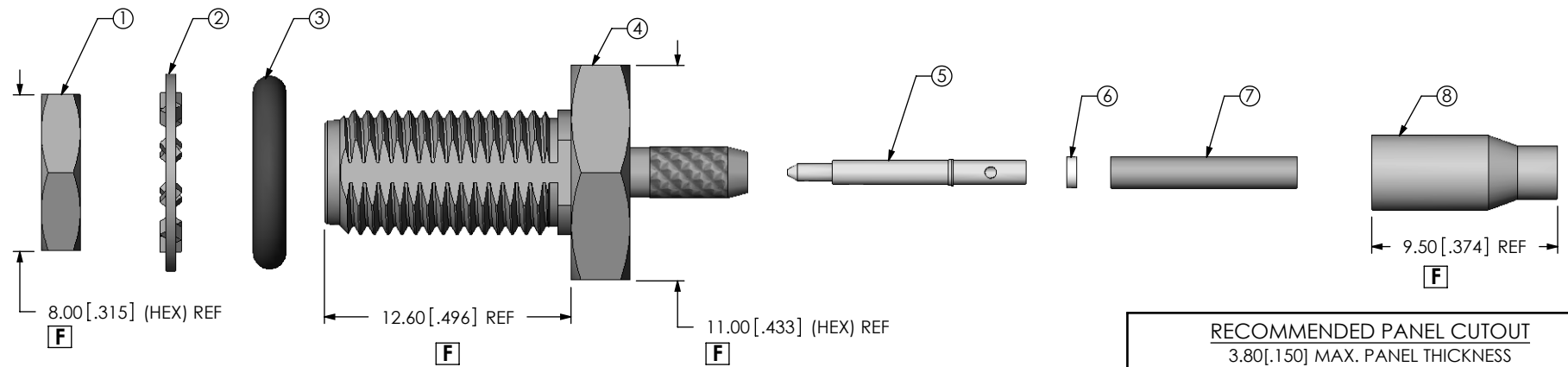
**THIS PRODUCT MANUFACTURED WITH LEAD-FREE PROCESSING**

**DESIGNED & DIMENSIONED IN MILLIMETERS [INCHES]**

**SMA-J-C-X-ST-SR2**  
 GENDER -J: JACK  
 TYPE -C: CABLE  
 TERMINATION -SR2: SEALED REVERSE POLARITY BULKHEAD (RG178)  
 ORIENTATION -ST: STRAIGHT  
 PLATING SPECIFICATION [F]  
 -H: 30µ" GOLD CENTER CONTACT, 3µ" GOLD OUTER CONTACT (SEE TABLE 1)


DO NOT SCALE FROM THIS PRINT

TABLE 1 [F]		
ITEM	COMPONENT	-H
1	NUT	SMA-NUT-001-F
2	LOCK WASHER	SMA-LWAS-001-F
3	GASKET	SMA-GKT-002
4	SUB-ASSEMBLY	SUB-SMA-J-C-F-ST-SB1
5	PIN	SMA-PIN-005-H
6	INSULATOR	SMA-INS-001
7	INNER FERRULE	SMA-FER-003-N
8	OUTER FERRULE	MCX-FER-004-F

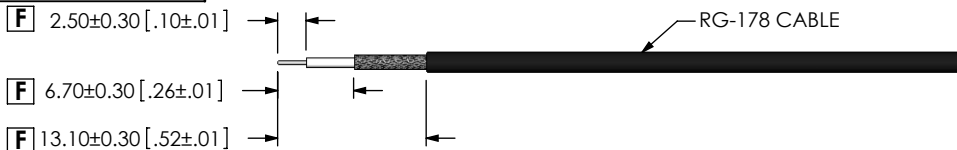


[F]

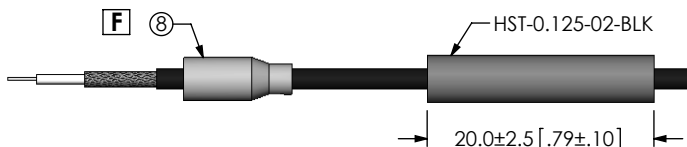
- NOTES:
1. [C] REPRESENTS A CRITICAL DIMENSION.
  2. NOTE DELETED.
  3. PRODUCT TO BE PACKAGED PER PACKING STANDARD CO-HD-WI-3040-M.
  4. NOTE DELETED.

<p>UNLESS OTHERWISE SPECIFIED, DIMENSIONS ARE IN MILLIMETERS. TOLERANCES ARE:</p> <table border="0"> <tr> <td>DECIMALS</td> <td>ANGLES</td> </tr> <tr> <td>X.X: ±0.3 [.01]</td> <td>5°</td> </tr> <tr> <td>X.XX: ±0.13 [.005]</td> <td></td> </tr> <tr> <td>X.XXX: ±0.051 [.0020]</td> <td></td> </tr> </table>	DECIMALS	ANGLES	X.X: ±0.3 [.01]	5°	X.XX: ±0.13 [.005]		X.XXX: ±0.051 [.0020]		<p><b>PROPRIETARY NOTE</b>          THIS DOCUMENT CONTAINS INFORMATION CONFIDENTIAL AND PROPRIETARY TO SAMTEC, INC. AND SHALL NOT BE REPRODUCED OR TRANSFERRED TO OTHER DOCUMENTS OR DISCLOSED TO OTHERS OR USED FOR ANY PURPOSE OTHER THAN THAT WHICH IT WAS OBTAINED WITHOUT THE EXPRESSED WRITTEN CONSENT OF SAMTEC, INC.</p>	 <p>520 PARK EAST BLVD, NEW ALBANY, IN 47150          PHONE: 812-944-6733 FAX: 812-948-5047          e-Mail: info@SAMTEC.com code 55322</p>
DECIMALS	ANGLES									
X.X: ±0.3 [.01]	5°									
X.XX: ±0.13 [.005]										
X.XXX: ±0.051 [.0020]										
<p><b>MATERIAL:</b> DO NOT SCALE DRAWING SHEET SCALE: 3:1</p> <p>PIN: BeCu          BODY: PHOS BRONZE          INSULATOR: PTFE</p>	<p>DESCRIPTION:          SMA STR JACK S REV POLARITY BULKHEAD, RG178- 50 OHM</p> <p>DWG. NO.  <b>SMA-J-C-X-ST-SR2</b></p> <p>BY: R MUSSER 04/05/2009 SHEET 1 OF 2</p>									

REVISION F



IN PROCESS 1  
STRIP AND TIN INNER  
CONDUCTOR



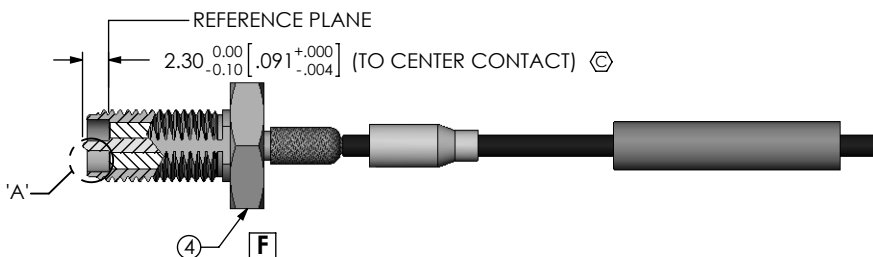
IN-PROCESS 2  
ADD HEAT SHRINK  
TUBE & FERRULE



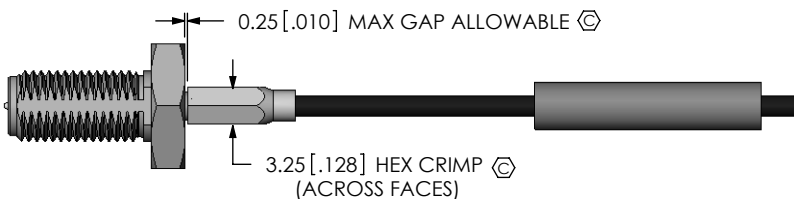
IN-PROCESS 3  
FLARE SHIELD, ADD INNER  
FERRULE & INSULATOR



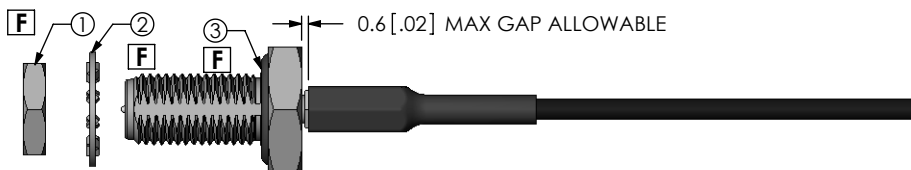
IN-PROCESS 4  
SOLDER SIGNAL PIN



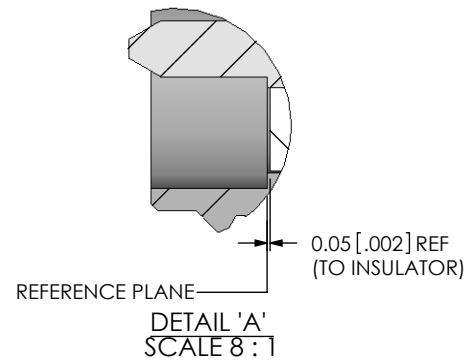
IN-PROCESS 5  
ADD SUB ASSEMBLY



IN-PROCESS 6  
CRIMP FERRULE  
(USE CRIMP HAND TOOL  
#CAT-HT-126667-21  
OR EQUIVALENT)  
(USE .128" HEX DIE)



IN PROCESS 7  
APPLY HEAT SHRINK TUBING  
& ADD GASKET



F

F:\DWG\MISC\MKTG\SMA-J-C-X-ST-SR2-MKT.SLDDRW

PROPRIETARY NOTE

THIS DOCUMENT CONTAINS INFORMATION  
CONFIDENTIAL AND PROPRIETARY TO  
SAMTEC, INC. AND SHALL NOT BE REPRODUCED  
OR TRANSFERRED TO OTHER DOCUMENTS OR  
DISCLOSED TO OTHERS OR USED FOR ANY  
PURPOSE OTHER THAN THAT WHICH IT WAS  
OBTAINED WITHOUT THE EXPRESSED WRITTEN  
CONSENT OF SAMTEC, INC.

DO NOT SCALE DRAWING

SHEET SCALE: 3:2



520 PARK EAST BLVD, NEW ALBANY, IN 47150  
PHONE: 812-944-6733 FAX: 812-948-5047  
e-Mail info@SAMTEC.com code 55322

DESCRIPTION:  
SMA STR JACK S REV POLARITY BULKHEAD, RG178- 50 OHM

DWG. NO.  
SMA-J-C-X-ST-SR2

BY: R MUSSER 04/05/2009 SHEET 2 OF 2