

**THIS PRODUCT MANUFACTURED WITH LEAD-FREE PROCESSING**

**DESIGNED & DIMENSIONED IN MILLIMETERS [INCHES]**

DO NOT SCALE FROM THIS PRINT

**TABLE 1 [J]**

ITEM	COMPONENT	-H
1	NUT	SMB5-NUT-001-F
2	LOCK WASHER	SMB-LWAS-001-F
3	SUB-ASSEMBLY	SUB-SMB5-J-C-F-ST-BH1
4	PIN	SMB5-PIN-002-H
5	FERRULE	MCX-FER-002-F

**SMB5-J-C-X-ST-BH1**

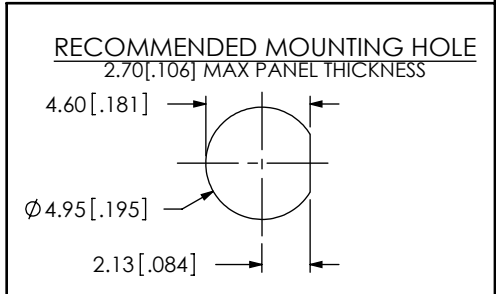
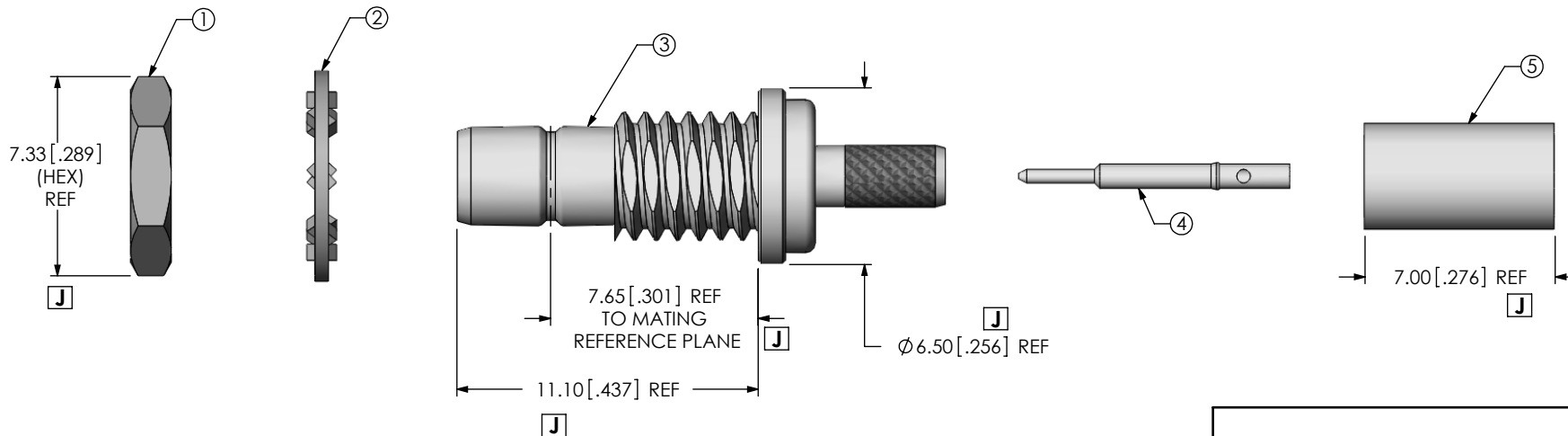
GENDER  
-J: JACK

TYPE  
-C: CABLE

TERMINATION  
-BH1: BULKHEAD (RG174 OR RG316)

ORIENTATION  
-ST: STRAIGHT

PLATING [J]  
-H: 30µ" GOLD CENTER CONTACT, 3µ" GOLD OUTER CONTACT (SEE TABLE 1)



- [J]** NOTES:
- ⊕ REPRESENTS A CRITICAL DIMENSION.
  - NOTE DELETED.
  - NOTE DELETED.
  - NOTE DELETED.
  - PRODUCT TO BE PACKAGED PER PACKAGING STANDARD CO-HD-WI-3040-M.
  - NOTE DELETED.
  - NOTE DELETED.
  - NOTE DELETED.

UNLESS OTHERWISE SPECIFIED, DIMENSIONS ARE IN MILLIMETERS [INCHES]. TOLERANCES ARE:

DECIMALS ANGLES [J]

.X: ±0.3 [.01] 5°

.XX: ±0.13 [.005]

.XXX: ±0.051 [.0020]

**PROPRIETARY NOTE**  
THIS DOCUMENT CONTAINS INFORMATION CONFIDENTIAL AND PROPRIETARY TO SAMTEC, INC. AND SHALL NOT BE REPRODUCED OR TRANSFERRED TO OTHER DOCUMENTS OR DISCLOSED TO OTHERS OR USED FOR ANY PURPOSE OTHER THAN THAT WHICH IT WAS OBTAINED WITHOUT THE EXPRESSED WRITTEN CONSENT OF SAMTEC, INC.

**MATERIAL:** DO NOT SCALE DRAWING SHEET SCALE: 4:1  
SHELL, FERRULE, NUT, WASHER: BRASS  
CONTACT: BRASS  
DIELECTRIC: PTFE

**samtec**

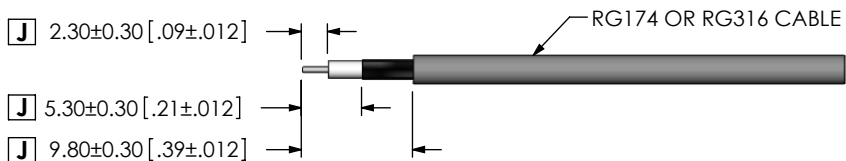
520 PARK EAST BLVD., NEW ALBANY, IN 47150  
PHONE: 812-944-6733 FAX: 812-948-5047  
e-Mail info@SAMTEC.com code 55322

DESCRIPTION: SMB5 STRAIGHT JACK ASSEMBLY

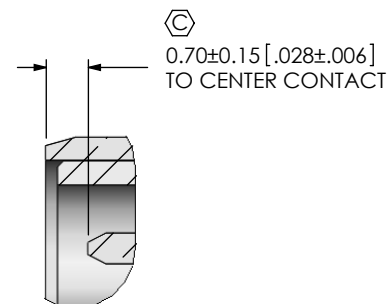
DWG. NO. **SMB5-J-C-X-ST-BH1**

BY: G.HERMAN 03/17/2008 SHEET 1 OF 2

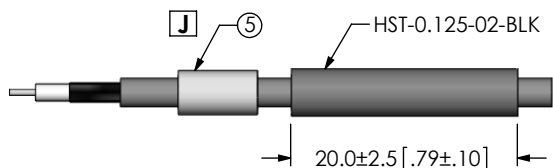
REVISION J



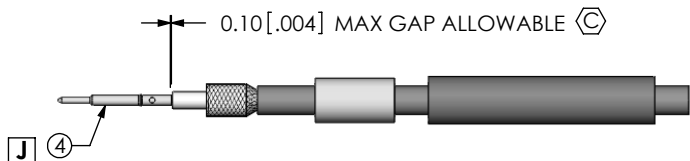
J  
IN PROCESS 1  
STRIP AND TIN  
INNER CONDUCTOR



DETAIL 'A'  
SCALE 8:1

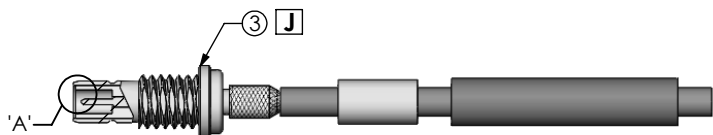


J  
IN-PROCESS 2  
ADD HEAT SHRINK  
TUBE & FERRULE

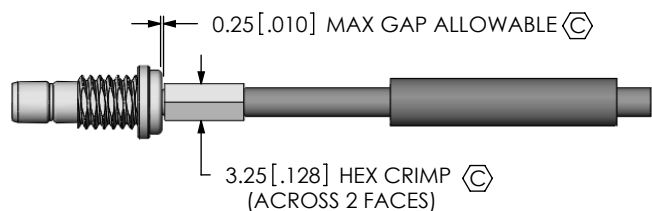


J  
IN-PROCESS 3  
SOLDER SIGNAL PIN

J

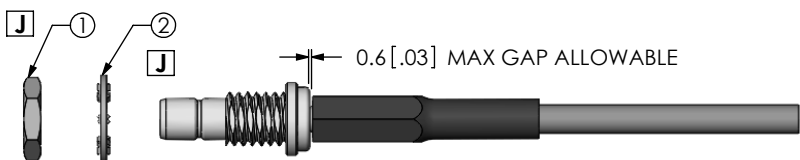


J  
IN-PROCESS 4  
ADD SUB ASSEMBLY



J  
IN-PROCESS 5  
CRIMP FERRULE  
(USE CRIMP HAND TOOL  
#CAT-HT-126667-21  
OR EQUIVALENT)  
(USE .128" HEX DIE)

F:\DWG\MISC\MKTG\SMB5-J-C-X-ST-BH1-MKT.SLDDRW



J  
IN-PROCESS 6  
APPLY HEAT  
SHRINK TUBING

PROPRIETARY NOTE

THIS DOCUMENT CONTAINS INFORMATION  
CONFIDENTIAL AND PROPRIETARY TO  
SAMTEC, INC. AND SHALL NOT BE REPRODUCED  
OR TRANSFERRED TO OTHER DOCUMENTS OR  
DISCLOSED TO OTHERS OR USED FOR ANY  
PURPOSE OTHER THAN THAT WHICH IT WAS  
OBTAINED WITHOUT THE EXPRESSED WRITTEN  
CONSENT OF SAMTEC, INC.



520 PARK EAST BLVD, NEW ALBANY, IN 47150  
PHONE: 812-944-6733 FAX: 812-948-5047  
e-Mail info@SAMTEC.com code 55322

DO NOT SCALE DRAWING

SHEET SCALE: 3:2

DESCRIPTION:

SMB5 STRAIGHT JACK ASSEMBLY

DWG. NO.

SMB5-J-C-X-ST-BH1

BY: G.HERMAN 03/17/2008

SHEET 2 OF 2