

DO NOT SCALE FROM THIS PRINT

DESIGNED & DIMENSIONED IN MILLIMETERS [INCHES]

SMB7H-P-C-XX-ST-CA3

GENDER  
-P: PLUG

TYPE  
-C: CABLE

TERMINATION  
-CA3: RG179 CABLE

ORIENTATION **D**  
-ST: STRAIGHT

PLATING  
-HN: HEAVY GOLD/NICKEL (SEE NOTES 7 & 8)  
(SUB-SMB7H-P-C-FN-ST-CA3)  
(SMB7H-P-C-H-ST-CA3-SKT)  
(MCX-FER-001-N)

-H: HEAVY GOLD (SEE NOTES 7 & 8)  
(SUB-SMB7H-P-C-F-ST-CA3)  
(SMB7H-P-C-H-ST-CA3-SKT)  
(MCX-FER-001-F)

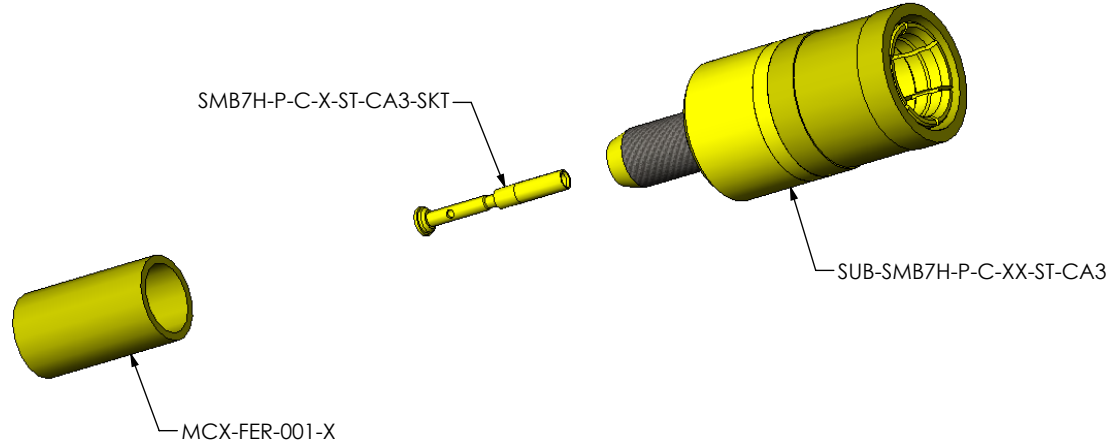
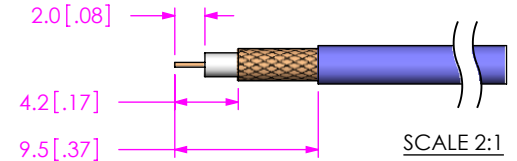


FIG. 1  
SMB7H-P-C-XX-ST-CA3 SHOWN

NOTES:

- Ⓢ REPRESENTS A CRITICAL DIMENSION.
- PUSHOUT FORCE FOR CENTER CONTACT: 17.79 N [4.0 LB] MIN.
- SEE SHEET 3 FOR TERMINATION INFORMATION.
- NOTE DELETED.
- PRODUCT TO BE PACKAGED PER PACKAGING STANDARD CO-HD-WI-3040-M.
- RoHS COMPLIANT.
- COMPONENT PLATING DESIGNATIONS:  
-H: .000030" MIN. GOLD OVER .000050" MIN. NICKEL.  
-F: .000003" MIN. GOLD OVER .000050" MIN. NICKEL.  
-N: .000100" MIN. NICKEL.
- ASSEMBLY PLATING DESIGNATIONS:  
-HN: (CENTER CONTACT)-H:  
(OUTER CONTACT)-F:  
(REMAINING METAL PARTS)-N:  
-H: (CENTER CONTACT)-H:  
(OUTER CONTACT)-F:  
(REMAINING METAL PARTS)-F:

RECOMMENDED CABLE STRIPPING

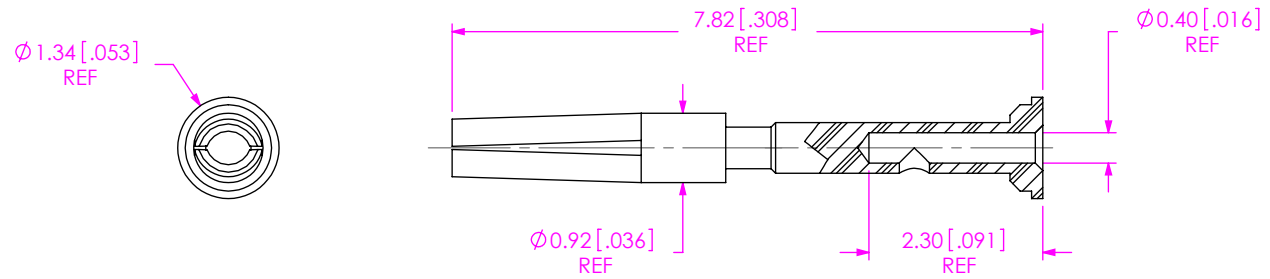


**Pb** THIS PRODUCT MANUFACTURED WITH LEAD-FREE PROCESSING

c:\enterprisevault\DWG\MISC\MKTG\SMB7H-P-C-XX-ST-CA3-MKT.SLDDRW

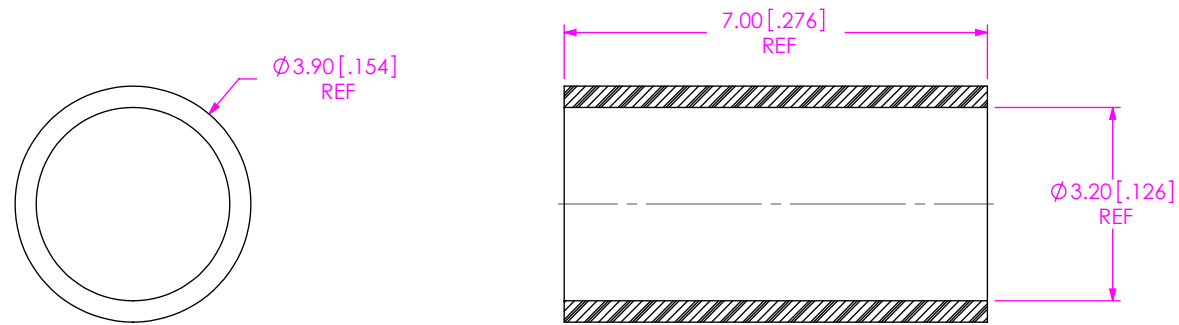
UNLESS OTHERWISE SPECIFIED DIMENSIONS ARE IN MILLIMETERS [INCHES]	PROPRIETARY NOTE THIS DOCUMENT CONTAINS INFORMATION CONFIDENTIAL AND PROPRIETARY TO SAMTEC, INC. AND SHALL NOT BE REPRODUCED OR TRANSFERRED TO OTHER DOCUMENTS OR DISCLOSED TO OTHERS OR USED FOR ANY PURPOSE OTHER THAN THAT WHICH IT WAS OBTAINED WITHOUT THE EXPRESSED WRITTEN CONSENT OF SAMTEC, INC.
TOLERANCES ARE: DECIMALS ANGLES .X: ±0.3 [.01] 2° .XX: ±0.13 [.005] .XXX: ±0.051 [.0020]	
MATERIAL: DO NOT SCALE DRAWING SHEET SCALE: 3:1	
SHELL, FERRULE: BRASS CONTACT: COPPER ALLOY DIELECTRIC: PTFE	

<b>samtec</b>	
520 PARK EAST BLVD, NEW ALBANY, IN 47150 PHONE: 812-944-6733 FAX: 812-948-5047 e-Mail: info@SAMTEC.com code: 55322	
DESCRIPTION: <b>C</b> SMB STRAIGHT CABLE PLUG, RG179 - 75 OHM	
DWG. NO. <b>SMB7H-P-C-XX-ST-CA3</b>	
BY: G. HERMAN 10/09/2008	SHEET 1 OF 3



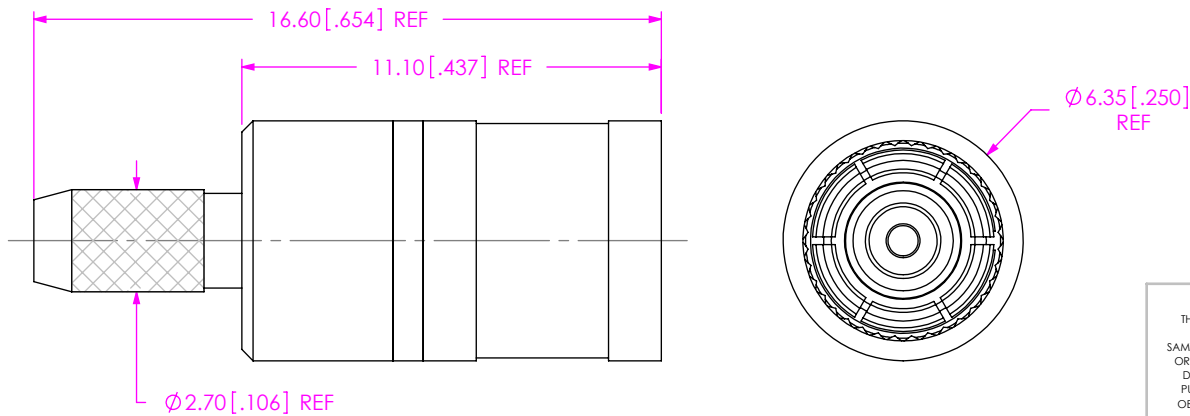
SCALE 10:1

SAMTEC PART NUMBER	ITEM
SMB7H-P-C-X-ST-CA3-SKT	SOCKET



SCALE 8:1

SAMTEC PART NUMBER	ITEM
MCX-FER-001-X	FERRULE



c:\enterprisevault\DWG\MISC\MKTG\SMB7H-P-C-XX-ST-CA3-MKT.SLDDRW

**PROPRIETARY NOTE**

THIS DOCUMENT CONTAINS INFORMATION CONFIDENTIAL AND PROPRIETARY TO SAMTEC, INC. AND SHALL NOT BE REPRODUCED OR TRANSFERRED TO OTHER DOCUMENTS OR DISCLOSED TO OTHERS OR USED FOR ANY PURPOSE OTHER THAN THAT WHICH IT WAS OBTAINED WITHOUT THE EXPRESSED WRITTEN CONSENT OF SAMTEC, INC.

DO NOT SCALE DRAWING

SHEET SCALE: 1:1



520 PARK EAST BLVD, NEW ALBANY, IN 47150  
 PHONE: 812-944-6733 FAX: 812-948-5047  
 e-Mail: info@SAMTEC.com code: 55322

DESCRIPTION:  
 SMB STRAIGHT CABLE PLUG, RG179 - 75 OHM

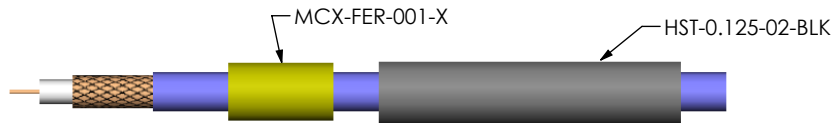
DWG. NO.  
**SMB7H-P-C-XX-ST-CA3**

BY: G. HERMAN 10/09/2008 SHEET 2 OF 3

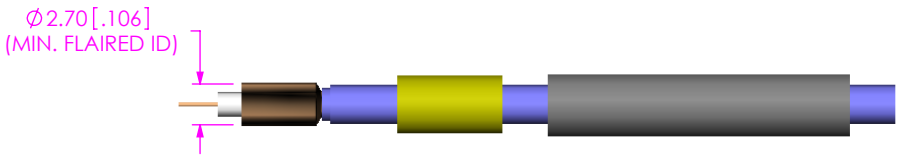
SAMTEC PART NUMBER	ITEM
SUB-SMB7H-P-C-XX-ST-CA3	SUB ASSEMBLY



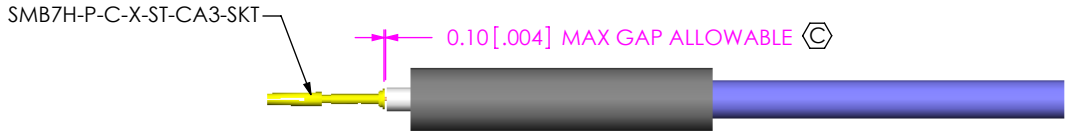
STRIP AND TIN INNER CONDUCTOR



ADD HEAT SHRINK TUBE AND FERRULE

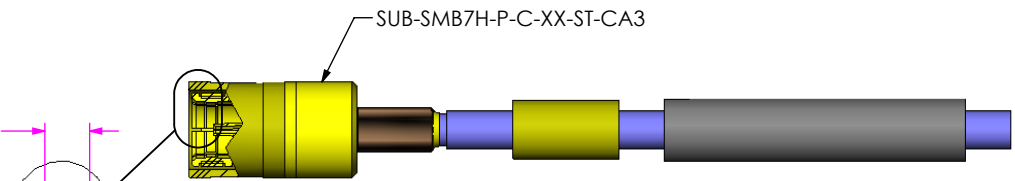


FLARE SHIELD



SOLDER SIGNAL SOCKET

1.49<sup>+0.15</sup><sub>0.00</sub> [.058<sup>+0.006</sup><sub>.000</sub>]  
TO CENTER CONTACT

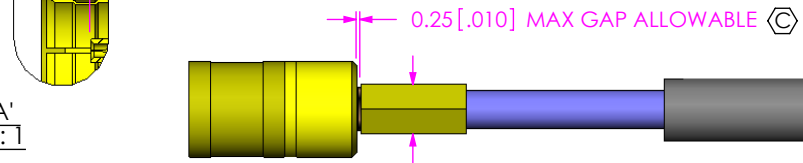


ADD SUB-SMB7H-P-C-XX-ST-CA3

CRIMP FERRULE  
(USE RF CRIMP HAND TOOL #CAT-HT-T26667-21 OR EQUIVALENT)

**D**

DETAIL 'A'  
SCALE 4 : 1



APPLY HEAT SHRINK TUBE

c:\enterprise\vault\DWG\MISC\MKTG\SMB7H-P-C-XX-ST-CA3-MKT.SLDDRW

**PROPRIETARY NOTE**  
THIS DOCUMENT CONTAINS INFORMATION CONFIDENTIAL AND PROPRIETARY TO SAMTEC, INC. AND SHALL NOT BE REPRODUCED OR TRANSFERRED TO OTHER DOCUMENTS OR DISCLOSED TO OTHERS OR USED FOR ANY PURPOSE OTHER THAN THAT WHICH IT WAS OBTAINED WITHOUT THE EXPRESSED WRITTEN CONSENT OF SAMTEC, INC.



520 PARK EAST BLVD, NEW ALBANY, IN 47150  
PHONE: 812-944-6733 FAX: 812-948-5047  
e-Mail: info@SAMTEC.com code: 55322

DO NOT SCALE DRAWING

SHEET SCALE: 1:1

DESCRIPTION:  
SMB STRAIGHT CABLE PLUG, RG179 - 75 OHM

DWG. NO.  
**SMB7H-P-C-XX-ST-CA3**

BY: G. HERMAN 10/09/2008 SHEET 3 OF 3