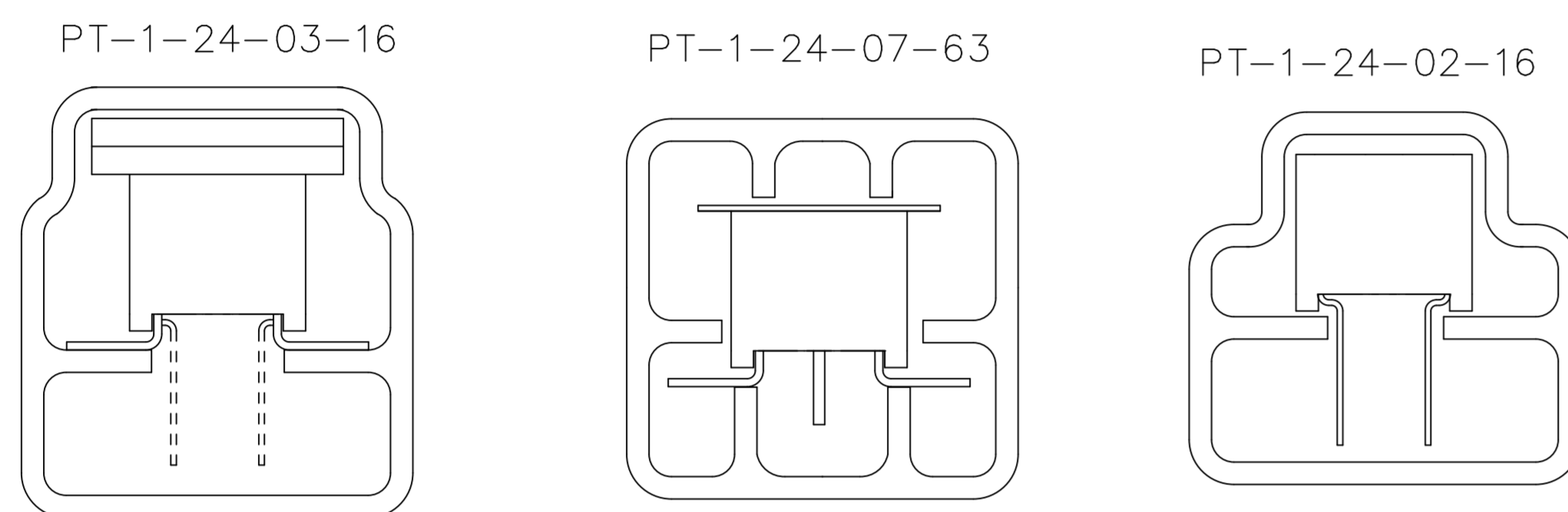


REVISION AS

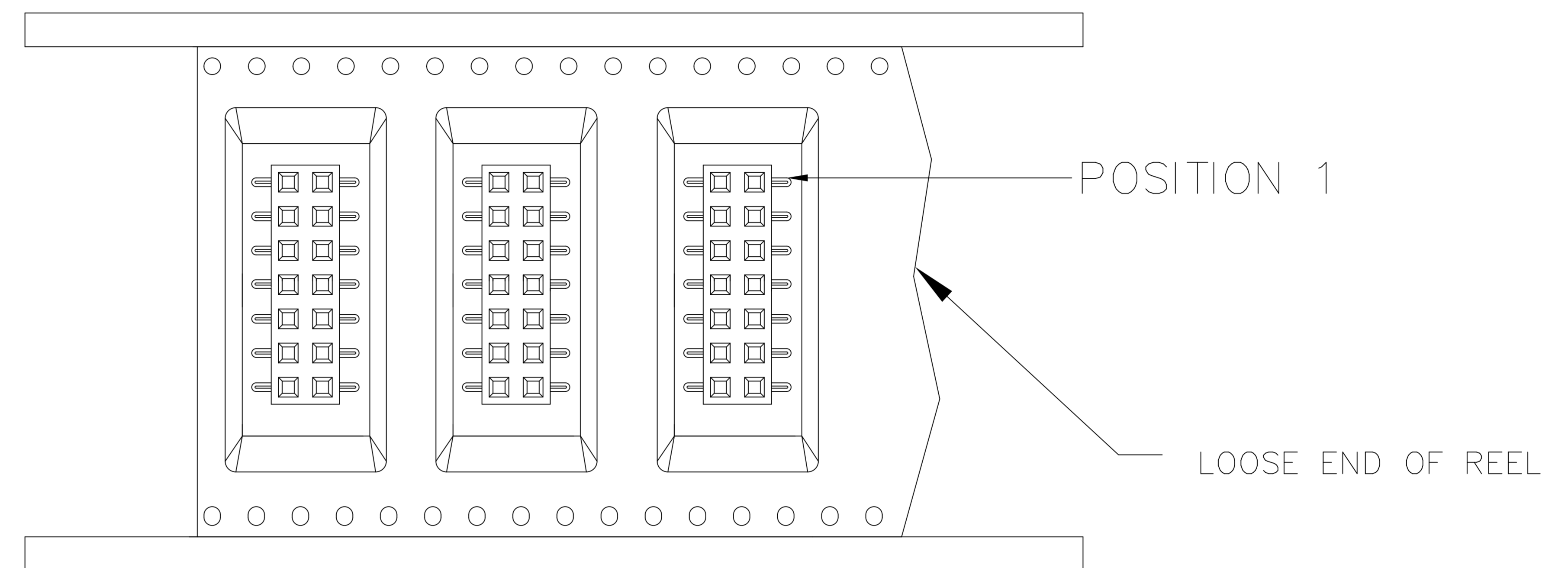
DIMENSIONS ARE IN INCHES		UNLESS OTHERWISE NOTED		TOLERANCES ARE:		TITLE: 2 mm SOCKET STRIP		DWG NO: SMM-1XX-XX-XX-D-XX-X-XX	
ONE PLACE DECIMALS: ± .1	THREE PLACE DECIMALS: ± .005	ANGLES ± 1°						SHEET 2 OF 2	
TWO PLACE DECIMALS: ± .01	FOUR PLACE DECIMALS: ± .0020								

PACKAGE PARTS IN TUBES AS SHOWN

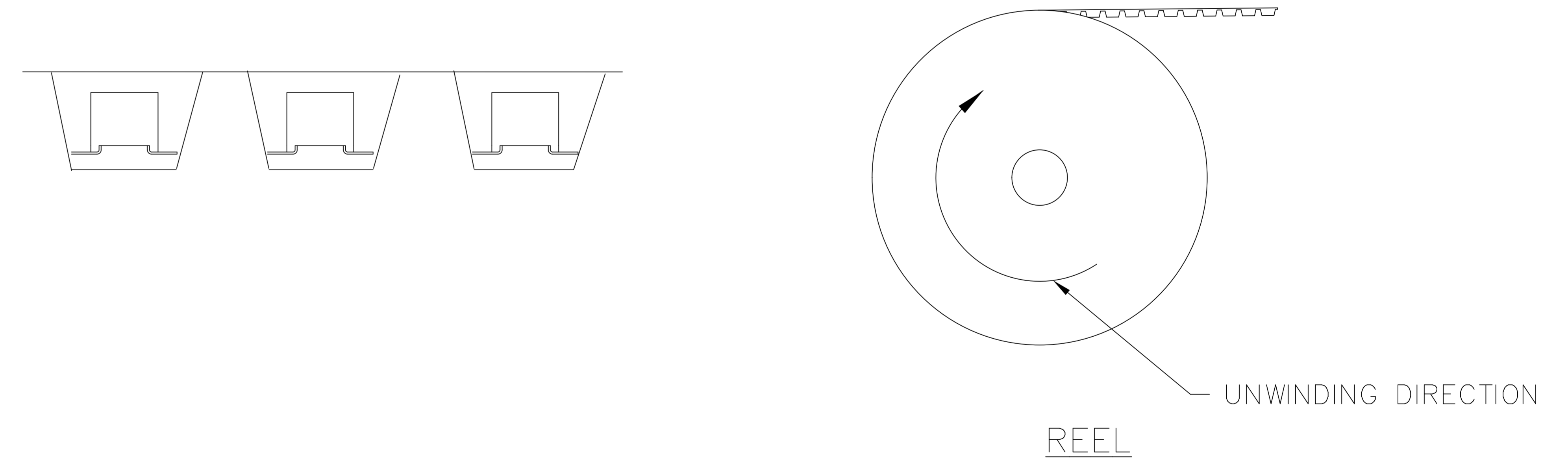


LEAD STYLE	OPTIONS	POS PER ROW	TUBE	PLUG
-01	NONE, -LC (SEE NOTE 8)	05 THRU 40	PT-1-24-02-16	TP-24
-02	NONE (SEE NOTE 9)	03 THRU 40	PT-1-24-02-16	TP-24
-02	-K, -LC, -K-LC	06 THRU 40	PT-1-24-07-63	TP-24
-01, -02	-P, -P-LC	06 THRU 40	PT-1-24-03-16	TP-03

TAPE & REEL
FIG. 7



UNWINDING DIRECTION →
PARTS TO COME OFF REEL AS SHOWN
WITH POCKETS FACING UP



PROPRIETARY NOTE
THIS DOCUMENT CONTAINS INFORMATION
CONFIDENTIAL AND PROPRIETARY TO
SAMTEC INC. AND SHALL NOT BE
REPRODUCED OR TRANSFERRED TO
OTHER DOCUMENTS OR DISCLOSED TO
OTHERS OR USED FOR ANY PURPOSE
OTHER THAN THAT FOR WHICH IT WAS
OBTAINED WITHOUT THE EXPRESSED
WRITTEN CONSENT OF SAMTEC INC.

EXISPROD\ASSEMBLY\2MM
SMM-1XX-XX-X-D-XX-X-XX-ASM2

samtec

520 PARK EAST BLVD. NEW ALBANY, INDIANA 47150
PHONE (812) 944-6733 P.O. BOX 1147
CODE 55322

MADE BY: KOLB 5-21-91

ENGINEER APPROVAL
DEM

SMM-1XX-XX-XX-D-XX-X-XX
SHEET 2 OF 2