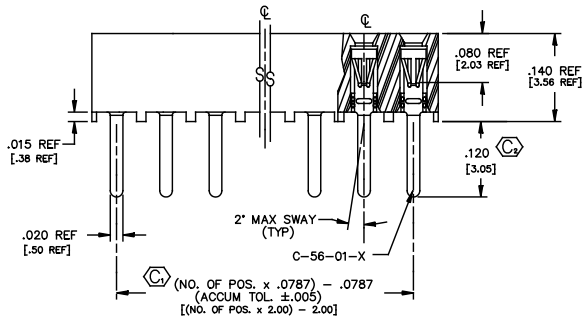
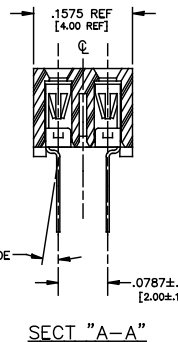
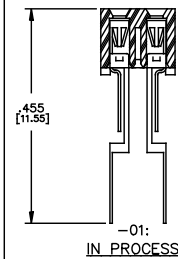
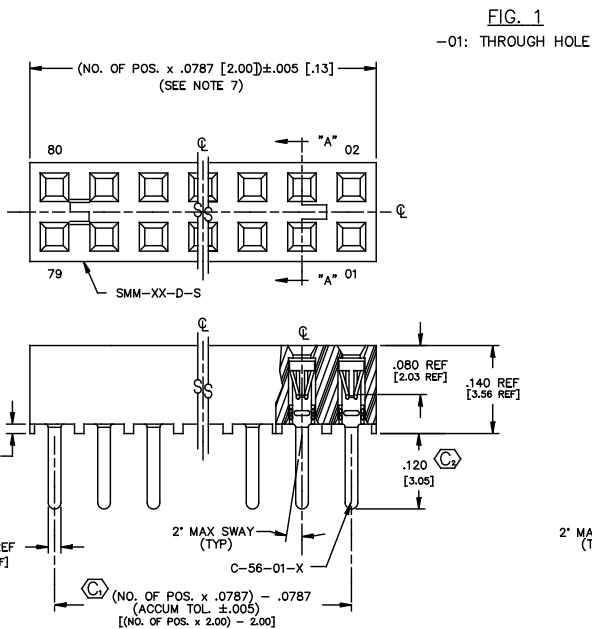


REVISION AV

DO NOT SCALE FROM THIS PRINT



NOTES:

- RETENTION FORCE IN BODY TO BE: 1 lbs. MIN
- INSERTION FORCE TO BE: 3.0 oz. MAX.
- WITHDRAWAL FORCE TO BE: 0.5 oz. MIN.
- ⊙ REPRESENTS CRITICAL DIMS. FOR STATISTICAL PROCESS CONTROL.
- [] DIMS ARE IN METRIC AND ARE NOT CONTROLLING DIMS.
- LC OPTION FOR A 02 POSITION WILL HAVE ONLY ONE LOCKING CLIP (LC-05-T).
- "END WALLS" AFTER CUTTING SHOULD BE .017 ± .005.
- FOR -01 LEAD STYLE, LAYER PACKAGE POSITIONS -01 THRU -04.
- FOR -02 LEAD STYLE WITHOUT PICK & PLACE PAD, LAYER PACKAGE POSITION -02 ONLY.
- 02 THRU -05 POSITION WITH -K OR -P TO BE PACKAGED IN -TR ONLY. -06 THRU -40 POSITION AVAILABLE IN TUBE OR -TR PACKAGING.
- .010" MAX CUT FLASH.
- NO FLASH ALLOWED IN SOCKET OR EXTENDING BELOW LEADS.
- DUE TO THE HIGH AMOUNT OF INSERTION FORCE NEEDED, THE -LC OPTION IS NOT COMPATIBLE WITH AUTO PLACEMENT. SAMTEC RECOMMENDS MANUAL PLACEMENT FOR ALL ASSEMBLIES WITH THE -LC OPTION.
- INSULATOR MATERIAL: BLACK, LCP, UL 94 V0

DIMENSIONS ARE IN INCHES		UNLESS OTHERWISE NOTED		TOLERANCES ARE:		TITLE:	DWG NO.:
ONE PLACE DECIMALS: ± .1	THREE PLACE DECIMALS: ± .005	FOUR PLACE DECIMALS: ± .0020	ANGLES	± 1°		2 mm SOCKET STRIP	SMM-1XX-XX-XX-D-XX-XX-X-XX
TWO PLACE DECIMALS: ± .01							SHEET 1 OF 2

ROW OPTION
-D: DOUBLE ROW (USE SMM-XX-D-S)

NO. OF POS. PER ROW
THROUGH HOLE: -01 THRU -40
SURFACE MOUNT: -02 THRU -40

LEAD STYLE
-01: THROUGH HOLE (C-56-01-X)
-02: SURFACE MOUNT (C-56-02-X)

PLATING OPTION
-S: SELECTIVE, 30 Au / 50 NI NICKEL, ON CONTACT, MATTE TIN TAIL
-F: FLASH SELECTIVE, 3 Au / 50 NI MIN ON CONTACT, MATTE TIN TAIL
-H: HEAVY GOLD, 30 Au / 50 NI MIN ON CONTACT, 3 Au / 50 NI MIN ON TAIL
-SM: SELECTIVE, 30 Au / 50 NI MIN ON CONTACT, MATTE TIN TAIL
-FM: FLASH SELECTIVE, 3 Au / 50 NI MIN ON CONTACT, MATTE TIN TAIL
-L: LIGHT SELECTIVE, 10 Au / 50 NI MIN ON CONTACT, MATTE TIN TAIL

OPTION 1
-LC: LOCKING CLIP (USE 2 LC-05-TM) [AVAILABLE ONLY WITH LEAD STYLE -02. SEE * DIMS, SEE NOTE 6 & 13, SEE FIG 2]

OPTION 2
-P: PICK AND PLACE PAD (USE PPP-03) (SEE FIG 3)
-K: POLYAMIDE FILM PAD (USE K-DOT-.217-.313-.005) (.005 [1.13] THICKNESS; SEE FIG 4) [2 POS MIN, SEE NOTE 10] [AVAILABLE ON LEAD STYLE -02 ONLY]

POLARIZING OPTION
INDICATE POSITION (USE PK-07-N)

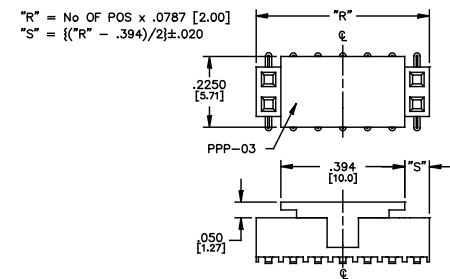
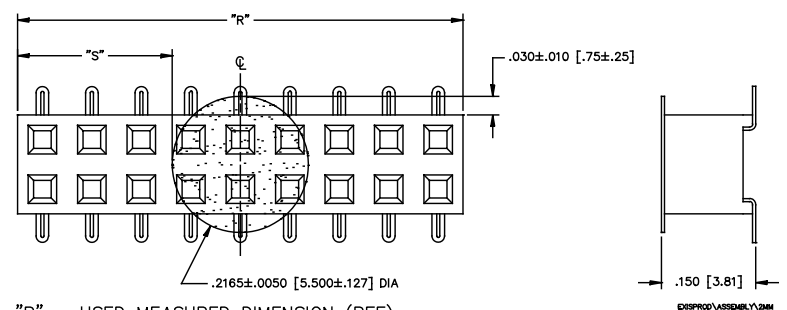
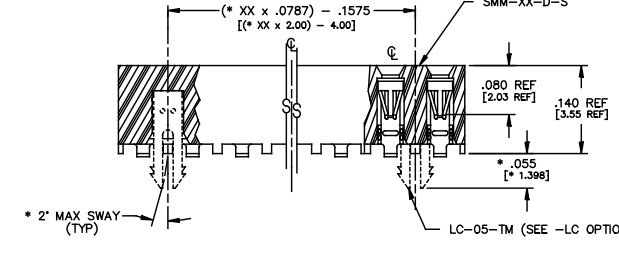
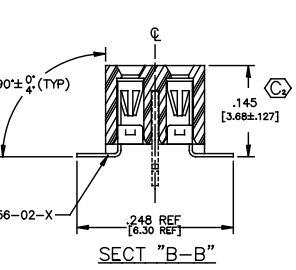
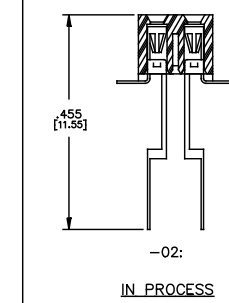
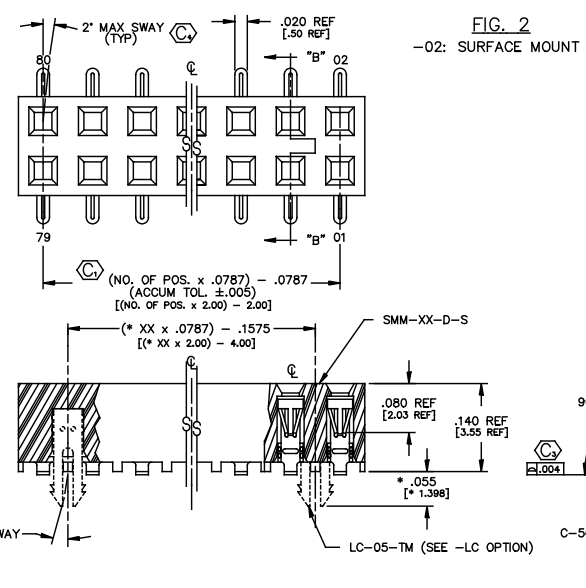


FIG. 3
-P: PICK AND PLACE PAD (PLACE PPP-03 ABOUT C.L. AS SHOWN) (SEE NOTE 10)



NOTE: "R" = USED MEASURED DIMENSION (REF)
"S" = {"R" - .2165 [5.50]} / 2 ± .020 [1.51]

FIG. 4
-K: POLYAMIDE FILM PAD [2 POSITION MINIMUM, SEE NOTE 10]

PROPRIETARY NOTE
THIS DOCUMENT CONTAINS PROPRIETARY INFORMATION. IT IS THE PROPERTY OF SAMTEC INC. AND IS NOT TO BE REPRODUCED OR TRANSMITTED IN ANY FORM OR BY ANY MEANS, ELECTRONIC OR MECHANICAL, INCLUDING PHOTOCOPYING, RECORDING, OR BY ANY INFORMATION STORAGE AND RETRIEVAL SYSTEM, WITHOUT THE WRITTEN CONSENT OF SAMTEC INC.

EDS/PROD/ASSEMBLY/2MM
SMM-1XX-XX-XX-D-XX-XX-X-XX

samtec

520 PARK EAST BLVD. NEW ALBANY, INDIANA 47150
PHONE (812) 944-8733 P.O. BOX 1147
CODE 55322

MADE BY: KOLB 5-21-81

APPROVAL: DEM

SMM-1XX-XX-XX-D-XX-XX-X-XX
SHEET 1 OF 2