

REV. CF

UNLESS OTHERWISE NOTED  
 DIMENSIONS ARE IN INCHES TOLERANCES ARE:  
 ONE PLACE DECIMALS ± .1 [2.5mm] THREE PLACE DECIMALS ± .005 [.13mm]  
 TWO PLACE DECIMALS ± #0 [50mm] FOUR PLACE DECIMALS ± .0020 [.02mm]  
 ANGLES ± 2°  
 TITLE: HIGH TEMP 2mm SURFACE MOUNT BOARD STACKING TERMINAL STRIP  
 DWG NO: TW-XX-XX-XXX-X-XXX-SM-XXX-XX  
 SHEET 2 OF 3

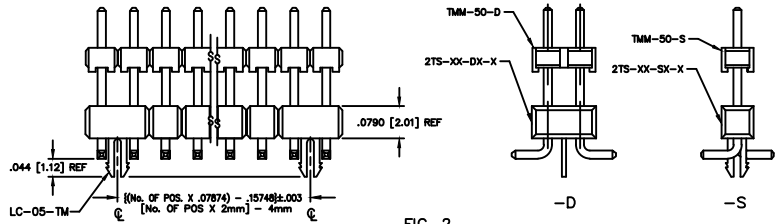


FIG. 2  
 (-LC OPTION)  
 SAME AS FIG 1 EXCEPT WHERE NOTED.

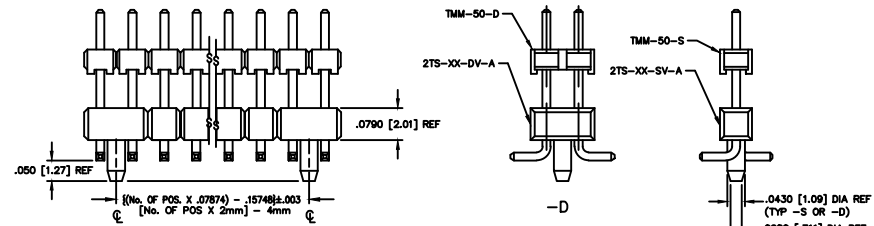
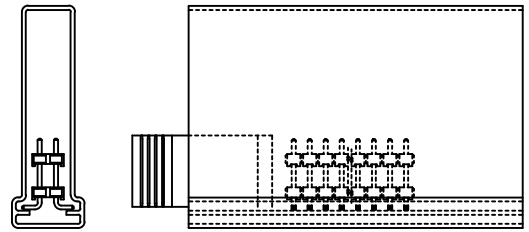


FIG. 3  
 (-A MOLDED ALIGNMENT PIN OPTION)  
 SAME AS FIG 1 EXCEPT WHERE NOTED.



PAGAGING VIEW  
 SCALE: 5X  
 PT-1-24-02-47  
 TP-03

ORIENT PLUG SQUARE AT BOTTOM OF TUBE,  
 PINS CANNOT CONTACT THE PLUG.

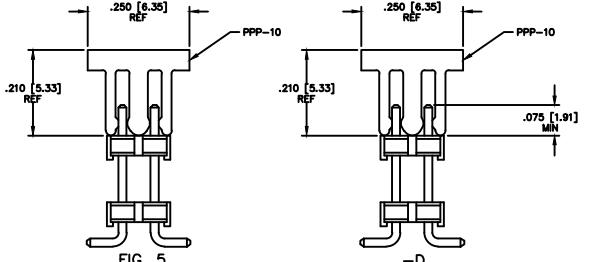


FIG. 5  
 (-M OPTION)  
 (SEE NOTE 10)  
 FIG. 6  
 (-P OPTION)  
 (SEE NOTE 10)

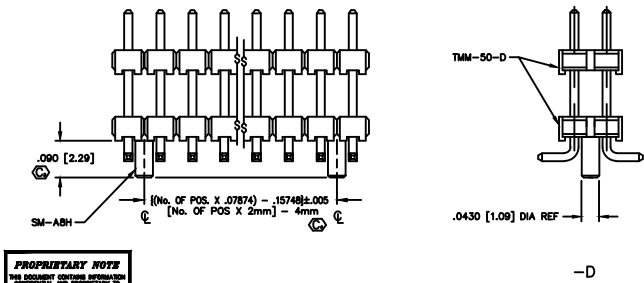
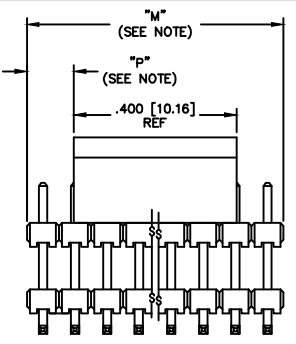
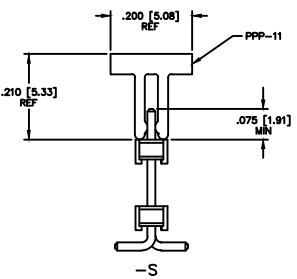


FIG. 4  
 (-A STAKED ALIGNMENT PIN OPTION)  
 SAME AS FIG 1 EXCEPT WHERE NOTED.



NOTE: "M" = USED MEASURED DIMENSION (REF)  
 "P" = [{"M" - .400} / 2] ± .020 [.51]  
 -APPLIES TO BOTH SINGLE & DOUBLE-



**samtec** MISC/LMTO TW-SM2  
 520 PARK EAST BLVD. NEW ALBANY, INDIANA 47150  
 PHONE (812) 944-8733 P.O. BOX 1147  
 CODE 35322  
 MADE BY: BRYANT 3-8-93 TW-XX-XX-XXX-X-XXX-SM-XXX-XX

**PROPRIETARY NOTE**  
 THIS DOCUMENT CONTAINS INFORMATION OF A CONFIDENTIAL NATURE. IT IS THE PROPERTY OF SAMTEC AND IS NOT TO BE REPRODUCED OR TRANSMITTED IN ANY FORM OR BY ANY MEANS, ELECTRONIC OR MECHANICAL, INCLUDING PHOTOCOPYING, RECORDING, OR BY ANY INFORMATION STORAGE AND RETRIEVAL SYSTEM. WITHOUT THE WRITTEN PERMISSION OF SAMTEC, THIS DOCUMENT IS TO BE DESTROYED IMMEDIATELY UPON THE COMPLETION OF THE PROJECT FOR WHICH IT WAS PREPARED.