

THE STRONG SILENT TYPE

Rugged, High Speed Interconnect Systems

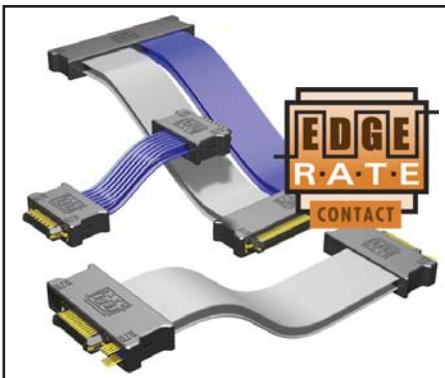
Samtec Signal Integrity products include rugged features for high reliability applications. Samtec has incorporated sealed housings, latching and locking systems, and rugged and removable contacts into a wide variety of standard high speed connectors and cable assemblies.

Eye Speed™ is a shielded, rugged cable system capable of many high speed protocols. The [EPLSP](#) Series utilizes the Edge Rate™ contact in a differential pair configuration and is available in 4X and 8X pinouts. It mates to a right angle, SMT connector ([ERI8](#)) that is enclosed inside a die-cast cage ([ERC](#)). The die-cast cage and shielded 26 AWG MiniSkew™ cable help improve EMI performance. It is rated at 5 Gbps at 1 meter length. The EPLSP Series also incorporates a latching system that locks the cable into the metal cage.



swappable assembly utilizes Samtec's Eyespeed™ cable, a 34 AWG micro coaxial cable, for high speed applications. The assembly omits the typical PCB for direct termination of cable to contact, therefore improving performance and reducing cost.

panel mount connectors in shell size 17 and size 10 with sealed Ethernet ([SCPE/SCRE](#)), USB and Mini USB ([SCPU/SCRU](#)), Tiger Eye™ contacts ([SCP3/SCR3](#)), power pins ([SCP1/SCR1](#)), and a high density system ([SCP2/SCR2](#)).



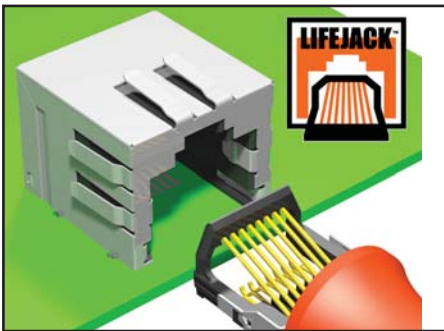
The [ERCD](#) Series is a high speed data rate cable Assembly featuring Samtec's Edge Rate™ contact and rugged friction locks. The hot



IP68 Rated Sealed Circular Systems

AccliMate™ is an extensive line of sealed circular interconnects that are IP68 rated for harsh environments. Standard AccliMate™ products include cables and

LifeJack™ ([MODS-LJ](#) Series) is a CAT3 RJ45 modular jack that utilizes a replaceable contact array sled for easy replacement in the field allowing the system to



Removeable contact sled

withstand extremely high cycles compared to traditional modular jacks. LifeJack™ is ideal for rugged applications where the contact has a high potential to be damaged. If damaged, the connector sled ([LJRS Series](#)) can be replaced without having to open the box and desolder the connector saving time and money. LifeJack™ can meet and exceed CAT5e requirements using Samtec's capacitive compensation scheme.

Samtec's [HDMI™ Cable Assemblies](#) are shielded, rugged I/O cables capable of HDMI™ protocol speed and beyond. The [HPSTP Series](#) utilizes 30 AWG shielded twisted pair cable and has an estimated performance of 1 GHz at 1 meter. When

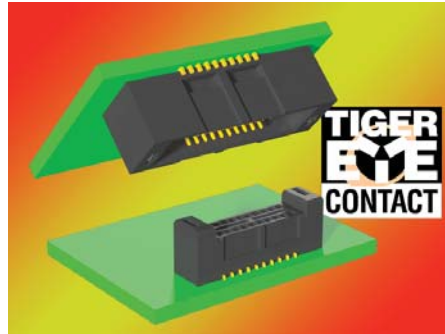


HDMI™ Cable assemblies and receptacles

increased performance is needed, the [HPLSP Series](#) uses Samtec's 26 AWG MiniSkew™ cable doubling the estimated performance to 2 GHz at 1 meter. Samtec offers both the standard and mini

HDMI™ cable assemblies and receptacles, and for increased retention, locking and latching features are also available.

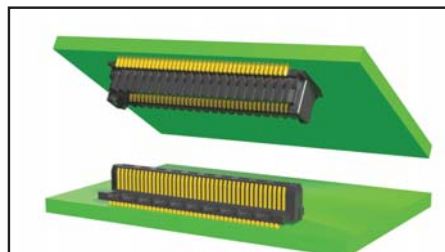
The [SEM/TEM Series](#) is the next generation of Samtec's high reliability Tiger Eye™ contact system. The series incorporates the Tiger Eye™ contact into a .8mm connector



High reliability .8mm Tiger Eye™ System

system providing reliability and ruggedness in a micro footprint. Weld tabs and locking clips are also available for increased retention to the PCB, and a discrete wire cable assembly is in development.

The [SS4/ST4 Series](#), a .4mm pitch connector set with a Blade



Rugged .4mm connector set

and Beam contact system, has a narrow body to save PCB real estate and is available in stack heights from 4mm to 6mm. Unlike most micro pitch systems, the SS4/ST4 Series has 1mm of contact wipe making it rugged for its size.



EEDP Series with Metal latches

The [EEDP Series](#) is a high speed edge card cable system. At .5 meter, it is rated at 2.85 GHz. The EEDP Series utilizes a .062" PCB to interface with the [HSEC8 Series](#) socket. It incorporates a squeeze latch for an additional 40 lbs. of withdrawal force ensuring the cable stays mated at all times.

The [RU8 \(HSEC8\) Series](#) is a .8mm high speed socket that utilizes the edge rate contact. The edge rate contact reduces broadside coupling therefore reducing capacitance. The board lock option is a latch on the connector body that interfaces with a notch on the PCB. The lock adds retention



RU8 high speed board stacker with locks

to the system and also keeps the board ([HSC8 Series](#)) securely mated to the RU8 ([HSEC8 Series](#)) when the other side is unmated.

