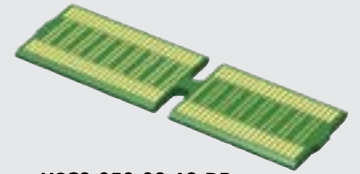


RU8-160-25-SE-L-DV-BL



HSC8-050-02-19-DP

RU8, HSC8 SERIES

(0.80 mm) .0315"

HIGH-SPEED RISER CARD KIT

SPECIFICATIONS
For complete specifications and recommended PCB layouts see www.samtec.com?RU8

CONNECTOR
Insulator Material: Black LCP
Contact: BeCu
Plating: Au or Sn over 50 μm (1.27 μm) Ni
Current Rating: 3.1 A per pin (6 adjacent pins powered)
Operating Temp: -55 °C to +125 °C

PROCESSING
Lead-Free Solderable: Yes
SMT Lead Coplanarity: (0.10 mm) .004" max (40-60)
RoHS Compliant: Yes

RECOGNITIONS
For complete scope of recognitions see www.samtec.com/quality

Note: While optimized for 50 Ω applications, this connector with alternative signal/ground patterns may also perform well in certain 75 Ω applications.



RU8 - **1** POSITIONS PER ROW - **STACK HEIGHT** - **SIGNAL ROUTING** - **PLATING OPTION** - **DV** - **BL** - **OTHER OPTION**

40, 50, 60
Kit contains two connectors and one card. Assembly required.

-19 = (19 mm) .748"
-25 = (25 mm) .984"
-30 = (30 mm) 1.180"

-SE = Single-Ended
-DP = Differential Pair

-L = 10 μm (0.25 μm) Gold on contact, Matte Tin on tail (Plating for connectors)
Plating for Card is Hard Gold

-BL = Board Locks (Bottom Socket only) (Not available on -19 stack height)

-K = (5.50 mm) .217" DIA Polyimide Film Pick & Place Pad
-TR = Tape & Reel
-FR = Full Reel Tape & Reel (must order max. quantity per reel; contact Samtec for quantity breaks)

Note: Other Gold plating options available.

NO. OF POSITIONS PER SIDE	A	B	-SE TOTAL SIGNAL LINES	-DP TOTAL SIGNAL PAIRS
40	(39.80) 1.567	(51.05) 2.010	40	26
50	(47.80) 1.882	(59.05) 2.325	50	32
60	(55.80) 2.197	(67.05) 2.640	60	38

Note: Some lengths, styles and options are non-standard, non-returnable.

Mates with: HSEC8

SPECIFICATIONS
For complete specifications see www.samtec.com?HSC8

Conductor: ½ oz Copper
Contact Area: Hard Gold Plated
Insulator: FR-4
RoHS Compliant: Yes

NO. OF POSITIONS PER SIDE	-SE TOTAL SIGNAL LINES	-DP TOTAL SIGNAL PAIRS
-40	40	26
-50	50	32
-60	60	38

Note: Some sizes, styles and options are non-standard, non-returnable.

HSC8 - **NUMBER OF POSITIONS PER SIDE** - **CARD STYLE** - **STACK HEIGHT** - **SIGNAL ROUTING**

-040, -050, -060

-02 = (1.60 mm) .062" thick card

-19 = (19 mm) .748"
-25 = (25 mm) .984"
-30 = (30 mm) 1.180"

-SE = Single-Ended
-DP = Differential Pair

STACK HEIGHT	A
-19	(14.84) .584
-25	(20.84) .820
-30	(25.84) 1.017