

Test Report

No. 2340509-CH20

Date: March 22, 2011

Page 1 of 7

Samtec Inc.
520 Park East Blvd
New Albany, IN 47151
United States

Attn: Dick Bowyer

The following sample(s) was/were submitted and identified by/on behalf of the client as:

Plastic Polymer – Sumika Super E6007LHF MR BZ
Color: Black
Sample/Style #: Sample Labeled: Sumika Super E6007LHF MR BZ

Sample Received Date:

3/9/2011

Testing Period:

3/10/2011 – 3/18/2011

Test Requested : Please refer to the result summary.

Test Method & Results : Please refer to next page(s).

Result Summary :

Test Requested	Conclusion
European Directive 2002/95/EC (RoHS) and its subsequent amendments	PASS
European Regulation (EC) No. 1907/2006 (REACH) Annex XVII and its amendments – Phthalates content (Formerly Directive 2005/84/EC)	PASS
Diisobutyl phthalate (DIBP) content	PASS
To determine the halogen content (Cl, Br) of the submitted sample(s).	See test results

Signed for and on behalf of SGS North America

Prepared By:




Cyrus Chan
 Laboratory Manager, Chemistry Laboratory

Veronica Marrero
 Report Writer, Chemistry Laboratory

"This document is issued by the Company subject to its General Conditions of Service printed overleaf, available on request or accessible at www.sgs.com/terms_and_conditions.htm and, for electronic format documents, subject to Terms and Conditions for Electronic Documents at www.sgs.com/terms_e-document.htm. Attention is drawn to the limitation of liability, indemnification and jurisdiction issues defined therein. Any holder of this document is advised that information contained hereon reflects the Company's findings at the time of its intervention only and within the limits of Client's instructions, if any. The Company's sole responsibility is to its Client and this document does not exonerate parties to a transaction from exercising all their rights and obligations under the transaction documents. This document cannot be reproduced except in full, without prior written approval of the Company. Any unauthorized alteration, forgery or falsification of the content or appearance of this document is unlawful and offenders may be prosecuted to the fullest extent of the law. Unless otherwise stated the results shown in this test report refer only to the sample(s) tested and such sample(s) are retained for 90 days only."

1. Test results by chemical method:

Cadmium, Lead, Mercury, Hexavalent Chromium, Polybromobiphenyl (PBB) and Polybromodiphenyl ether (PBDE) content

Method : With reference to IEC 62321:2008. Lead, Cadmium and Mercury were analyzed by Inductively Coupled Argon Plasma Spectrometry, Chromium (VI) was analyzed by UV-Visible Spectroscopy and PBB, PBDE were analyzed by Gas Chromatography – Mass Spectrometry (GC-MS).

Test Item	Result (mg/kg)	Detection Limit (mg/kg)	Permissible Limit (mg/kg)
	1		
Cadmium (Cd)	ND	20	100
Lead (Pb)	ND	20	1000
Mercury (Hg)	ND	20	1000
Hexavalent Chromium (Cr(VI))	ND	20	1000
Sum of PBBs	ND	--	1000
Monobromobiphenyl	ND	5	--
Dibromobiphenyl	ND	5	--
Tribromobiphenyl	ND	5	--
Tetrabromobiphenyl	ND	5	--
Pentabromobiphenyl	ND	5	--
Hexabromobiphenyl	ND	5	--
Heptabromobiphenyl	ND	5	--
Octabromobiphenyl	ND	5	--
Nonabromobiphenyl	ND	5	--
Decabromobiphenyl	ND	5	--
Sum of PBDEs	ND	--	1000
Monobromodiphenyl ether	ND	5	--
Dibromodiphenyl ether	ND	5	--
Tribromodiphenyl ether	ND	5	--
Tetrabromodiphenyl ether	ND	5	--
Pentabromodiphenyl ether	ND	5	--
Hexabromodiphenyl ether	ND	5	--
Heptabromodiphenyl ether	ND	5	--
Octabromodiphenyl ether	ND	5	--
Nonabromodiphenyl ether	ND	5	--
Decabromodiphenyl ether ##	ND	5	--
Comment	PASS	--	--

Sample Description:

1. **Sumika Super E6007LHF MR BZ**

Note :

1. ND = Not Detected = denoted less than reporting limit

"This document is issued by the Company subject to its General Conditions of Service printed overleaf, available on request or accessible at www.sgs.com/terms_and_conditions.htm and, for electronic format documents, subject to Terms and Conditions for Electronic Documents at www.sgs.com/terms_e-document.htm. Attention is drawn to the limitation of liability, indemnification and jurisdiction issues defined therein. Any holder of this document is advised that information contained hereon reflects the Company's findings at the time of its intervention only and within the limits of Client's instructions, if any. The Company's sole responsibility is to its Client and this document does not exonerate parties to a transaction from exercising all their rights and obligations under the transaction documents. This document cannot be reproduced except in full, without prior written approval of the Company. Any unauthorized alteration, forgery or falsification of the content or appearance of this document is unlawful and offenders may be prosecuted to the fullest extent of the law. Unless otherwise stated the results shown in this test report refer only to the sample(s) tested and such sample(s) are retained for 90 days only."

Remark : 1. ## = The exemption of DecaBDE in polymeric application according 2005/717/EC was overruled by the European Court of Justice by its decision of 01.04.2008. Subsequently DecaBDE will be included in the sum of PBDE after 01.07.2008.

2. European Regulation (EC) No. 1907/2006 (REACH) Annex XVII and its amendments – Phthalate content

Method : With reference to CPSC-CH-C1001-09.3. Analysis was performed by Gas Chromatography / Mass Spectrometry.

Test Item	Result (%)	Detection Limit (%)	Permissible Limit (%)
	1		
Dibutyl Phthalate (DBP)	ND	0.015	--
Benzylbutyl Phthalate (BBP)	ND	0.015	--
Bis-(2-ethylhexyl) Phthalate (DEHP)	ND	0.015	--
DBP + BBP + DEHP	< 0.05	--	0.1
Diisononyl Phthalate (DINP)	ND	0.015	--
Di-n-octyl Phthalate (DNOP)	ND	0.015	--
Diisodecyl Phthalate (DIDP)	ND	0.015	--
DINP + DNOP + DIDP	< 0.05	--	0.1
Comment	PASS	--	--

Sample Description :

1. **Sumika Super E6007LHF MR BZ**

Note : 1. % = percentage by weight
 2. ND = Not Detected
 3. < = less than

"This document is issued by the Company subject to its General Conditions of Service printed overleaf, available on request or accessible at www.sgs.com/terms_and_conditions.htm and, for electronic format documents, subject to Terms and Conditions for Electronic Documents at www.sgs.com/terms_e-document.htm. Attention is drawn to the limitation of liability, indemnification and jurisdiction issues defined therein. Any holder of this document is advised that information contained hereon reflects the Company's findings at the time of its intervention only and within the limits of Client's instructions, if any. The Company's sole responsibility is to its Client and this document does not exonerate parties to a transaction from exercising all their rights and obligations under the transaction documents. This document cannot be reproduced except in full, without prior written approval of the Company. Any unauthorized alteration, forgery or falsification of the content or appearance of this document is unlawful and offenders may be prosecuted to the fullest extent of the law. Unless otherwise stated the results shown in this test report refer only to the sample(s) tested and such sample(s) are retained for 90 days only."

3. Diisobutyl phthalate (DIBP) content

Method : With reference to CPSC-CH-C1001-09.3. Analysis was performed by Gas Chromatography / Mass Spectrometry.

Test Item	Result (%)		Detection Limit (%)
	1		
Diisobutyl phthalate (DIBP)	ND		0.015

Sample Description :

1. **Sumika Super E6007LHF MR BZ**

Note : 1. % = percentage by weight
2. ND = Not Detected

4. Halogen Results :

Test Items	Unit	Method	Method Detection Limit	1
Halogen – Chlorine (Cl) CAS # 007782-50-5	mg/kg	BS EN 14582:2007	50	ND
Halogen – Bromine (Br) CAS # 007726-95-6	mg/kg	BS EN 14582:2007	50	ND

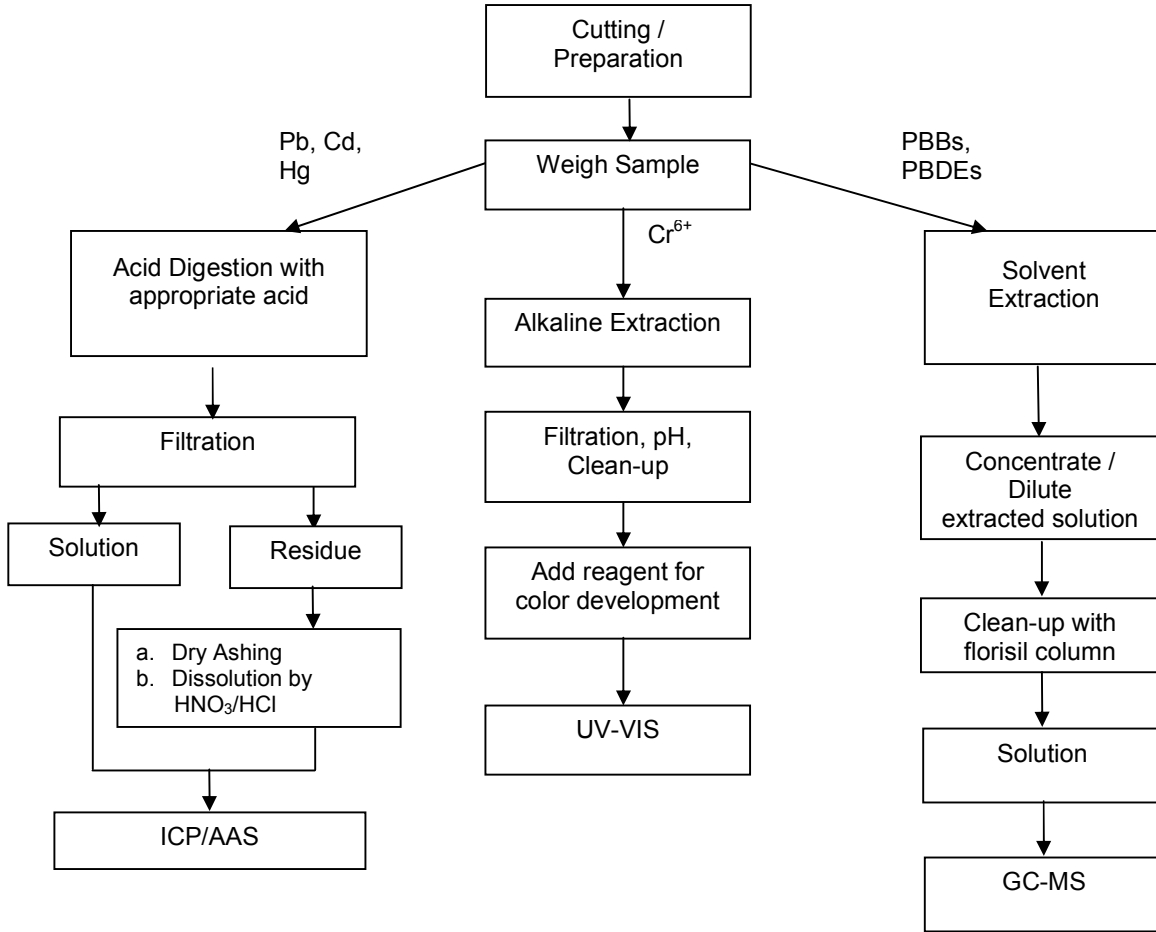
Sample Description:

1. **Sumika Super E6007LHF MR BZ**

Note: 1. mg/kg = ppm
2. ND = Not Detected, reported when the reading is less than the detection limit value.

"This document is issued by the Company subject to its General Conditions of Service printed overleaf, available on request or accessible at www.sgs.com/terms_and_conditions.htm and, for electronic format documents, subject to Terms and Conditions for Electronic Documents at www.sgs.com/terms_e-document.htm. Attention is drawn to the limitation of liability, indemnification and jurisdiction issues defined therein. Any holder of this document is advised that information contained hereon reflects the Company's findings at the time of its intervention only and within the limits of Client's instructions, if any. The Company's sole responsibility is to its Client and this document does not exonerate parties to a transaction from exercising all their rights and obligations under the transaction documents. This document cannot be reproduced except in full, without prior written approval of the Company. Any unauthorized alteration, forgery or falsification of the content or appearance of this document is unlawful and offenders may be prosecuted to the fullest extent of the law. Unless otherwise stated the results shown in this test report refer only to the sample(s) tested and such sample(s) are retained for 90 days only."

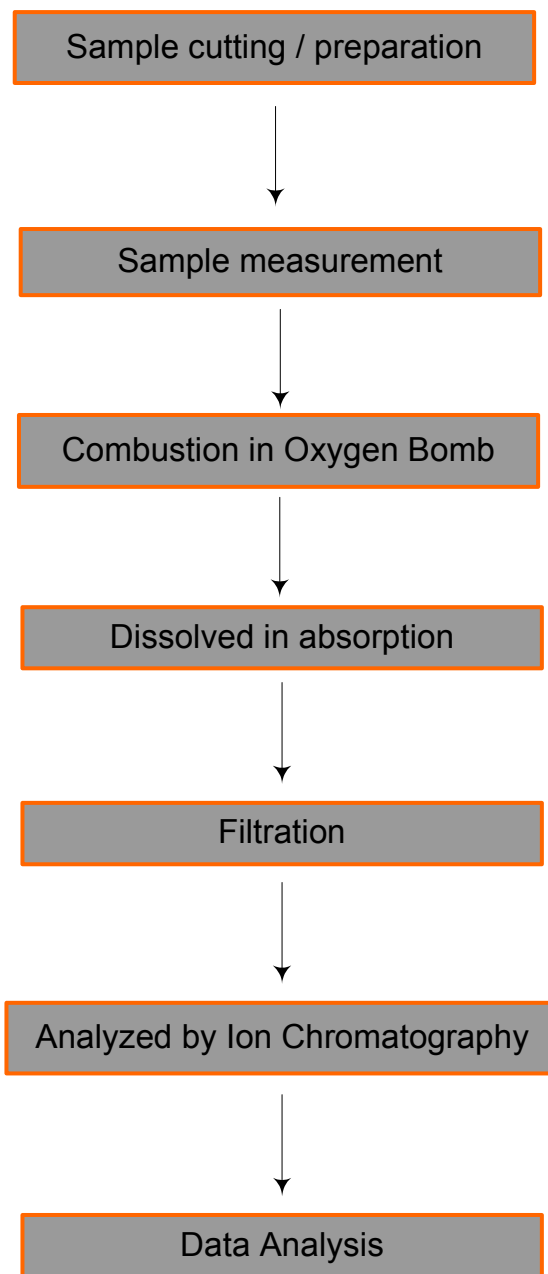
Flowchart for ROHS Testing:



- Note :
1. For Cr(VI), spot test is adopted for metal sample.
 2. The Cd, Pb and Hg contents test on polymeric samples were dissolved totally by pre-conditioning method according to above flow chart.

"This document is issued by the Company subject to its General Conditions of Service printed overleaf, available on request or accessible at www.sgs.com/terms_and_conditions.htm and, for electronic format documents, subject to Terms and Conditions for Electronic Documents at www.sgs.com/terms_e-document.htm. Attention is drawn to the limitation of liability, indemnification and jurisdiction issues defined therein. Any holder of this document is advised that information contained hereon reflects the Company's findings at the time of its intervention only and within the limits of Client's instructions, if any. The Company's sole responsibility is to its Client and this document does not exonerate parties to a transaction from exercising all their rights and obligations under the transaction documents. This document cannot be reproduced except in full, without prior written approval of the Company. Any unauthorized alteration, forgery or falsification of the content or appearance of this document is unlawful and offenders may be prosecuted to the fullest extent of the law. Unless otherwise stated the results shown in this test report refer only to the sample(s) tested and such sample(s) are retained for 90 days only."

Halogen Testing Flow Chart



"This document is issued by the Company subject to its General Conditions of Service printed overleaf, available on request or accessible at www.sgs.com/terms_and_conditions.htm and, for electronic format documents, subject to Terms and Conditions for Electronic Documents at www.sgs.com/terms_e-document.htm. Attention is drawn to the limitation of liability, indemnification and jurisdiction issues defined therein. Any holder of this document is advised that information contained hereon reflects the Company's findings at the time of its intervention only and within the limits of Client's instructions, if any. The Company's sole responsibility is to its Client and this document does not exonerate parties to a transaction from exercising all their rights and obligations under the transaction documents. This document cannot be reproduced except in full, without prior written approval of the Company. Any unauthorized alteration, forgery or falsification of the content or appearance of this document is unlawful and offenders may be prosecuted to the fullest extent of the law. Unless otherwise stated the results shown in this test report refer only to the sample(s) tested and such sample(s) are retained for 90 days only."

Sample Photo:



SGS authenticates the photo on the original report only
 *** End of Report ***

"This document is issued by the Company subject to its General Conditions of Service printed overleaf, available on request or accessible at www.sgs.com/terms_and_conditions.htm and, for electronic format documents, subject to Terms and Conditions for Electronic Documents at www.sgs.com/terms_e-document.htm. Attention is drawn to the limitation of liability, indemnification and jurisdiction issues defined therein. Any holder of this document is advised that information contained hereon reflects the Company's findings at the time of its intervention only and within the limits of Client's instructions, if any. The Company's sole responsibility is to its Client and this document does not exonerate parties to a transaction from exercising all their rights and obligations under the transaction documents. This document cannot be reproduced except in full, without prior written approval of the Company. Any unauthorized alteration, forgery or falsification of the content or appearance of this document is unlawful and offenders may be prosecuted to the fullest extent of the law. Unless otherwise stated the results shown in this test report refer only to the sample(s) tested and such sample(s) are retained for 90 days only."