

DO NOT SCALE FROM THIS PRINT

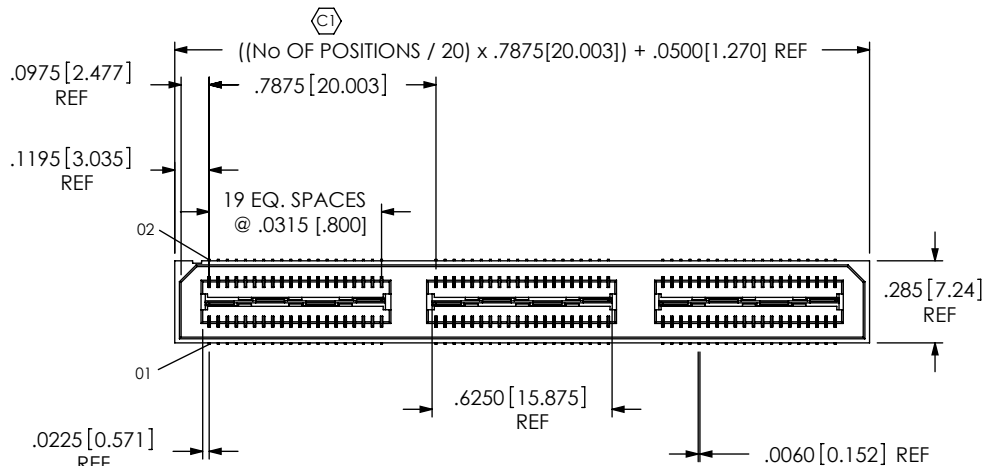
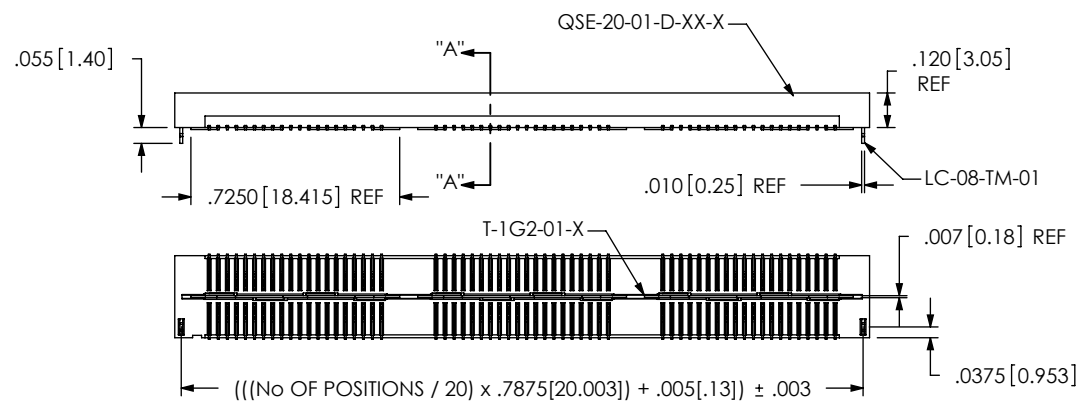
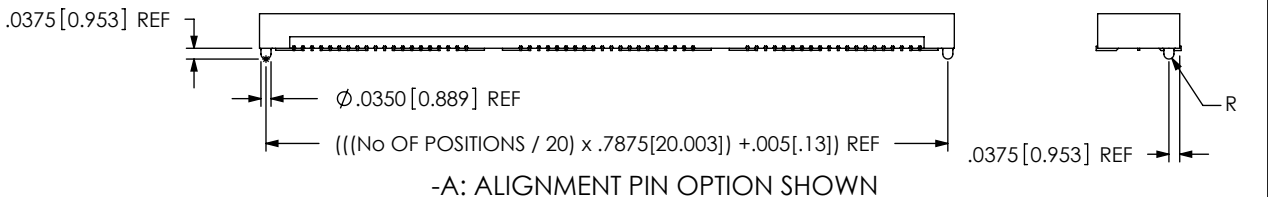


FIG. 1  
QSE-060-01-X-D-LC SHOWN



SECTION "A-A"



-A: ALIGNMENT PIN OPTION SHOWN

QSE-XXX-01-X-D-XXX

- No OF POSITIONS  
-020, -040, -060  
\* -080, \* -100 (PER ROW)
- LEAD STYLE  
-01 .1280[3.251]
- PLATING SPECIFICATION  
-F: FLASH SELECTIVE GOLD WITH MATTE TIN TAILS (USE C-126-21-F, T-1G2-XX-F) (SEE NOTE 8 & 13)  
-L: LIGHT SELECTIVE GOLD WITH MATTE TIN TAILS (SEE NOTE 11 & 13) (USE C-126-21-L, T-1G2-XX-L)  
-H: HEAVY GOLD (SEE NOTE 11 & 13) (USE C-126-21-H, T-1G2-XX-G)  
-C: ELECTRO-POLISHED SELECTIVE (SEE NOTE 11 & 13) (USE C-126-21-C, T-1G2-XX-L)
- ROW SPECIFICATION  
-D: DOUBLE (USE QSE-20-XX-D-XX)
- No OF BANKS  
\* SEE NOTE 12
- OPTION  
-A: ALIGNMENT PINS (USE QSE-20-XX-D-XX-A) NA WITH -LC OPTION  
-LC: LOCKING CLIPS (SEE NOTE 14) (USE LC-08-TM-01, ) NA WITH -A OPTION  
-GP: GUIDE POSTS (SEE FIG. 3) (USE QSE-20-01-D-XX-X-GP) (T & R PACKAGING: 40 POS. MAX.)  
-K: POLYIMIDE FILM (USE K-DOT-.325-.450-.005, SEE FIG. 2)  
-TR: TAPE & REEL (60 POS. MAX) (40 POS MAX -GP OPTION)  
-FL: FRICTION LOCKS (SEE FIG. 4, SHEET 2) (NOT AVAILABLE WITH -GP)  
-RT1: RETENTION OPTION (MUST USE -A OPTION) (USE QSE-20-01-D-XX-A-RT1 & SUB-SC-05-01-FF) (SEE FIG. 5, SHEET 2) (NOT AVAILABLE WITH -LC, -GP, OR -FL) (NOT AVAILABLE WITH -080 & -100 POS)  
\*\*\*-L: LATCHING OPTION (SEE FIG. 6, SHEET3) (NOT AVAILABLE WITH -LC, -GP, -FL, OR -RT1) (NOT AVAILABLE WITH -080 & -100 POS)
- \*\*\* = NOT RELEASED

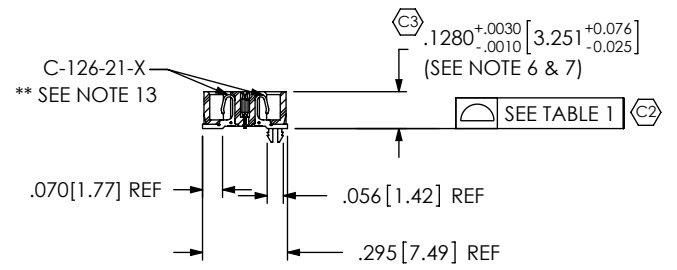


TABLE 1	
No OF POS	COPLANARITY INCLUDING GP
-020 THRU -040	.0040[.102]
-060 THRU -100	.0060[.152]

- NOTES:
- CONTACT RETENTION: 8 OZ MIN.
  - GROUND PLANE RETENTION: 8 OZ MIN.
  - Ⓢ REPRESENTS A CRITICAL DIMENSION.
  - PARTS ARE MOLDED TO POSITION.
  - DELETED.
  - MAX VARIANCE OF .002[.51].
  - DIMENSION APPLIES TO CONTACTS & GROUND PLANE.
  - L PLATING CAN BE SUBSTITUTED FOR -F PLATING, -G PLATED GROUND PLANE CAN BE SUBSTITUTED FOR -F PLATED GROUND PLANE.
  - GROUND PLANE PRESS HEIGHT MUST BE .003 [.08] LESS THAN THE MAX HEIGHT OR .001 [.03] GREATER THAN THE MINIMUM HEIGHT OF THE SOCKETS.
  - S-103 RETENTION: 1 LB MIN IN BODY.
  - MAY SUB C-126-01-X FOR C-126-21-X.
  - FOR NEW APPLICATIONS REQUIRING THESE POSITIONS, PLEASE CONTACT SAMTEC INTERCONNECT PROCESSING GROUP.
  - FOR -080, -100 POSITIONS USE C-269-11-X. DO NOT SUB C-126.
  - DUE TO THE HIGH AMOUNT OF INSERTION FORCE NEEDED, THE -LC OPTION IS NOT COMPATIBLE WITH AUTO PLACEMENT. SAMTEC RECOMMENDS MANUAL PLACEMENT FOR ALL ASSEMBLIES WITH THE -LC OPTION.

UNLESS OTHERWISE SPECIFIED, DIMENSIONS ARE IN INCHES. TOLERANCES ARE:

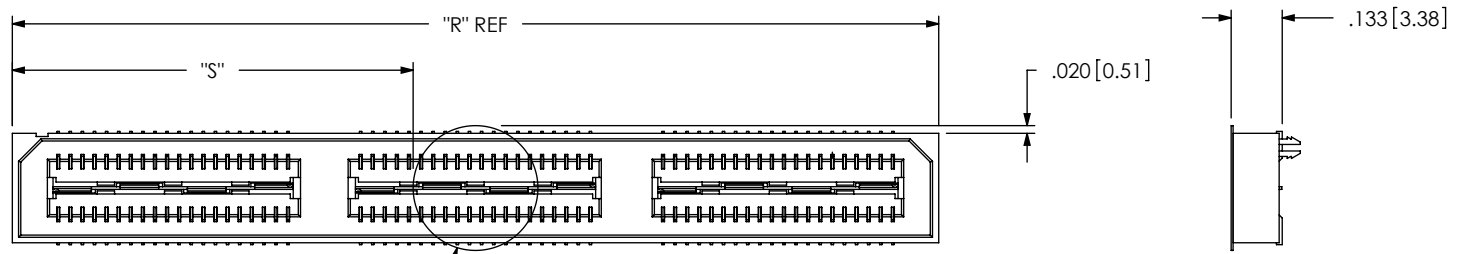
DECIMALS	ANGLES
.XX: ±.01[.3]	2°
.XXX: ±.005[.13]	
.XXXX: ±.0020[.051]	

MATERIAL: DO NOT SCALE DRAWING SHEET SCALE: 2:1  
INSULATOR: BLACK LCP  
CONTACT: PHOS BRONZE  
GROUND PLANE: PHOS BRONZE

PROPRIETARY NOTE  
THIS DOCUMENT CONTAINS INFORMATION CONFIDENTIAL AND PROPRIETARY TO SAMTEC, INC. AND SHALL NOT BE REPRODUCED OR TRANSFERRED TO OTHER DOCUMENTS OR DISCLOSED TO OTHERS OR USED FOR ANY PURPOSE OTHER THAN THAT WHICH IT WAS OBTAINED WITHOUT THE EXPRESSED WRITTEN CONSENT OF SAMTEC, INC.

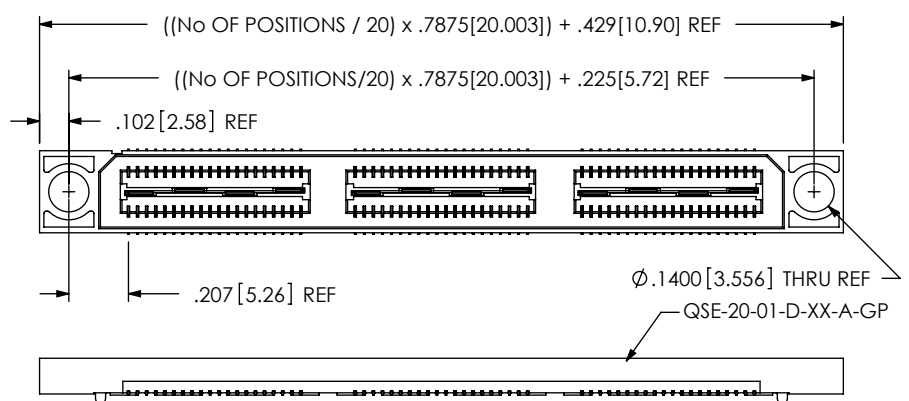
**samtec**  
520 PARK EAST BLVD, NEW ALBANY, IN 47150  
PHONE: 812-944-6733 FAX: 812-948-5047  
e-Mail: info@SAMTEC.com code: 55322

DESCRIPTION: .8mm DOUBLE ROW HS SOCKET ASSEMBLY  
DWG. NO. QSE-XXX-01-X-D-XXX  
BY: ERIC M 05/20/1999 SHEET 1 OF 3

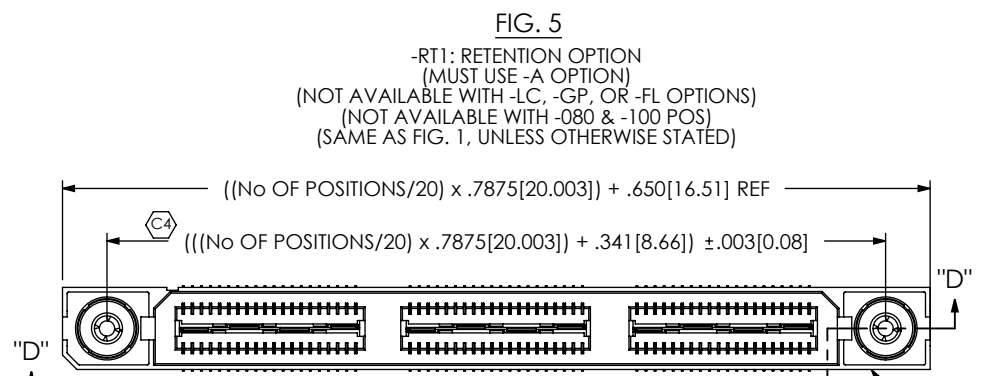


**FIG. 2**  
 -K: POLYIMIDE FILM PAD  
 [K-DOT-.325-.450-.005]

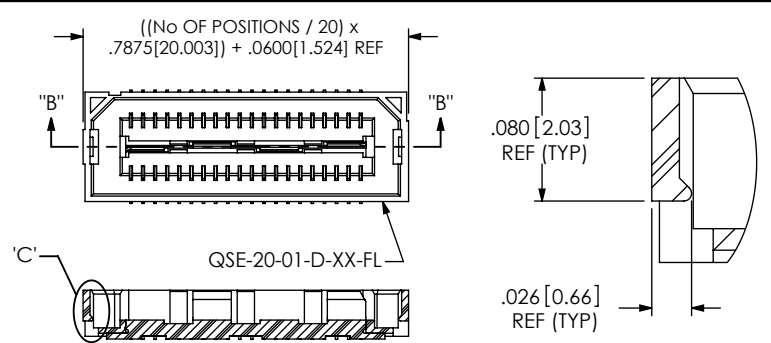
NOTE: "R" = ((No OF POSITIONS / 20) x .7875[20.003]) + .050[1.27]  
 WITH -GP OPTION: "R" = ((No OF POSITIONS / 20) x .7875[20.003]) + .429[10.90] REF  
 "S" = (("R" - .325[8.26]) / 2) ± .020[.51]



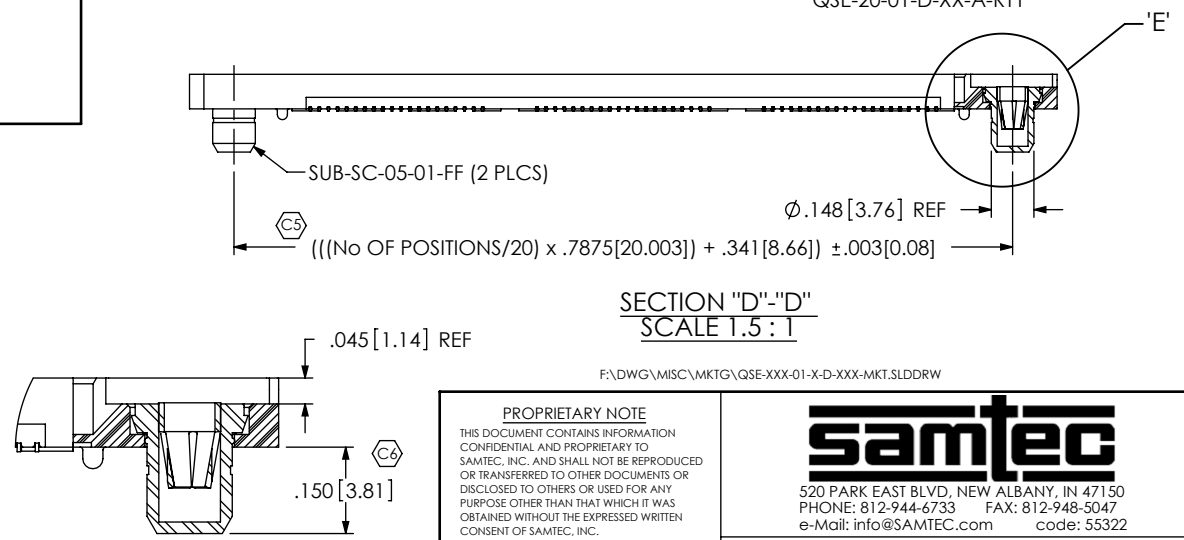
**FIG. 3**  
 -GP OPTION  
 (SAME AS FIG. 1, UNLESS OTHERWISE STATED)  
 [AVAILABLE ON LEAD STYLE -01 & -01-A ONLY]  
 (40 POS. MAX WITH T & R PACKAGING)



**FIG. 5**  
 -RT1: RETENTION OPTION  
 (MUST USE -A OPTION)  
 (NOT AVAILABLE WITH -LC, -GP, OR -FL OPTIONS)  
 (NOT AVAILABLE WITH -080 & -100 POS)  
 (SAME AS FIG. 1, UNLESS OTHERWISE STATED)



**FIG. 4**  
 -FL: FRICTION LOCKS  
 (NOT AVAILABLE WITH -GP OPTION)  
 (SAME AS FIG. 1, UNLESS OTHERWISE STATED)



**SECTION "D"-"D"**  
 SCALE 1.5 : 1

F:\DWG\MISC\MKTG\QSE-XXX-01-X-D-XXX-MKT.SLDRW

**PROPRIETARY NOTE**  
 THIS DOCUMENT CONTAINS INFORMATION  
 CONFIDENTIAL AND PROPRIETARY TO  
 SAMTEC, INC. AND SHALL NOT BE REPRODUCED  
 OR TRANSFERRED TO OTHER DOCUMENTS OR  
 DISCLOSED TO OTHERS OR USED FOR ANY  
 PURPOSE OTHER THAN THAT WHICH IT WAS  
 OBTAINED WITHOUT THE EXPRESSED WRITTEN  
 CONSENT OF SAMTEC, INC.

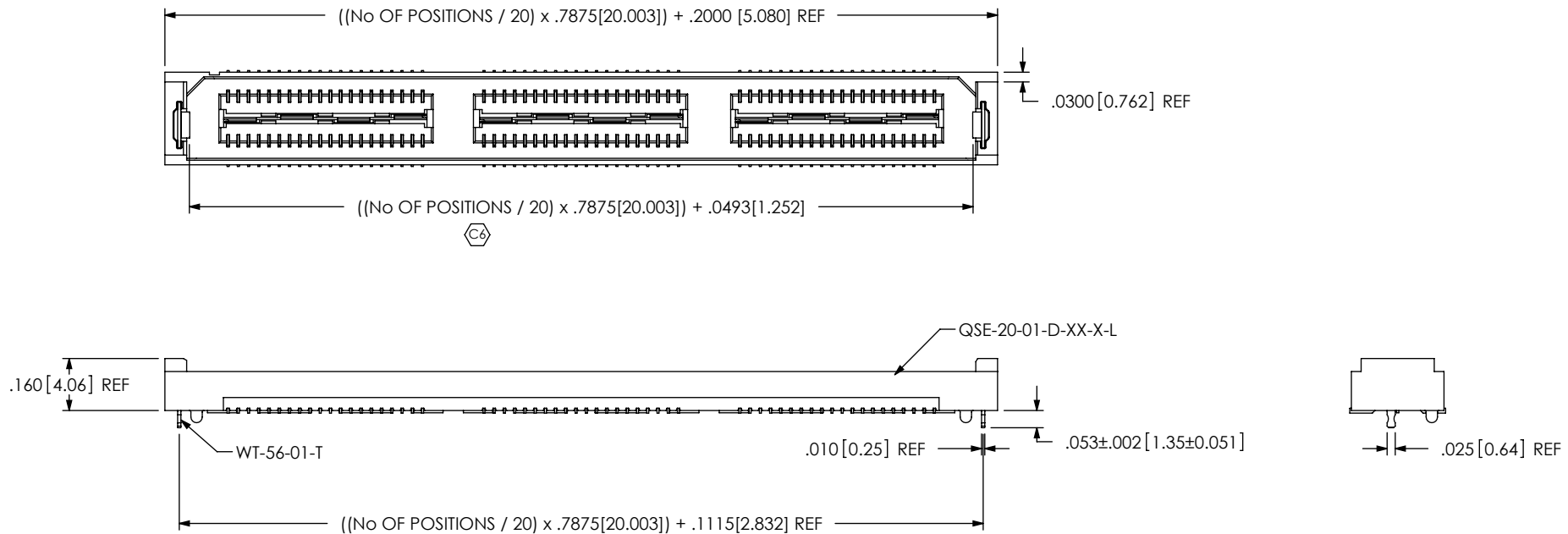
**samtec**  
 520 PARK EAST BLVD. NEW ALBANY, IN 47150  
 PHONE: 812-944-6733 FAX: 812-948-5047  
 e-Mail: info@SAMTEC.com code: 55322

DO NOT SCALE DRAWING  
 SHEET SCALE: 2:1

DESCRIPTION:	.8mm DOUBLE ROW HS SOCKET ASSEMBLY	
DWG. NO.	QSE-XXX-01-X-D-XXX	
BY:	ERIC M	05/20/1999
		SHEET 2 OF 3

FIG. 6

\*\*\* -L: LATCHING OPTION  
 (SAME AS FIG. 1, UNLESS OTHERWISE STATED)  
 (NOT AVAILABLE WITH -LC, -GP, -FL, OR -RT1)  
 (NOT AVAILABLE WITH -080 & -100 POS)  
 \*\*\* = NOT RELEASED



**PROPRIETARY NOTE**  
 THIS DOCUMENT CONTAINS INFORMATION  
 CONFIDENTIAL AND PROPRIETARY TO  
 SAMTEC, INC. AND SHALL NOT BE REPRODUCED  
 OR TRANSFERRED TO OTHER DOCUMENTS OR  
 DISCLOSED TO OTHERS OR USED FOR ANY  
 PURPOSE OTHER THAN THAT WHICH IT WAS  
 OBTAINED WITHOUT THE EXPRESSED WRITTEN  
 CONSENT OF SAMTEC, INC.

DO NOT SCALE DRAWING

SHEET SCALE: 2:1

**samtec**

520 PARK EAST BLVD, NEW ALBANY, IN 47150  
 PHONE: 812-944-6733 FAX: 812-948-5047  
 e-Mail: info@SAMTEC.com code: 55322

DESCRIPTION: .8mm DOUBLE ROW HS SOCKET ASSEMBLY

DWG. NO. QSE-XXX-01-X-D-XXX

BY: ERIC M 05/20/1999 SHEET 3 OF 3