

REVISION BK

DO NOT SCALE FROM THIS PRINT

TABLE 1
CONTACT SPECIFICATION

-XX	-S, -D, -T, -P	-S-RA, -P-RA	-D-RA	-T-RA
-01	C-8-1-X	N/A	N/A	N/A
-02	C-8-2-X	C-8-2-X	C-8-2-X C-8-3-X	C-8-2-X C-8-3-X C-8-5-X
-03	C-8-3-X	C-8-3-X	C-8-3-X C-8-5-X	N/A
-04	C-08-5-X	C-08-5-X	N/A	N/A
-06	C-8-6-X	N/A	N/A	N/A
-21	C-17-1-X	N/A	N/A	N/A
-22	C-17-2-X	C-17-2-X	C-17-2-X C-17-3-X	C-17-2-X C-17-3-X C-17-5-X
-23	C-17-3-X	C-17-3-X	C-17-3-X	N/A
-24	C-17-5-X	C-17-5-X	N/A	N/A

UNLESS OTHERWISE NOTED TOLERANCES ARE:

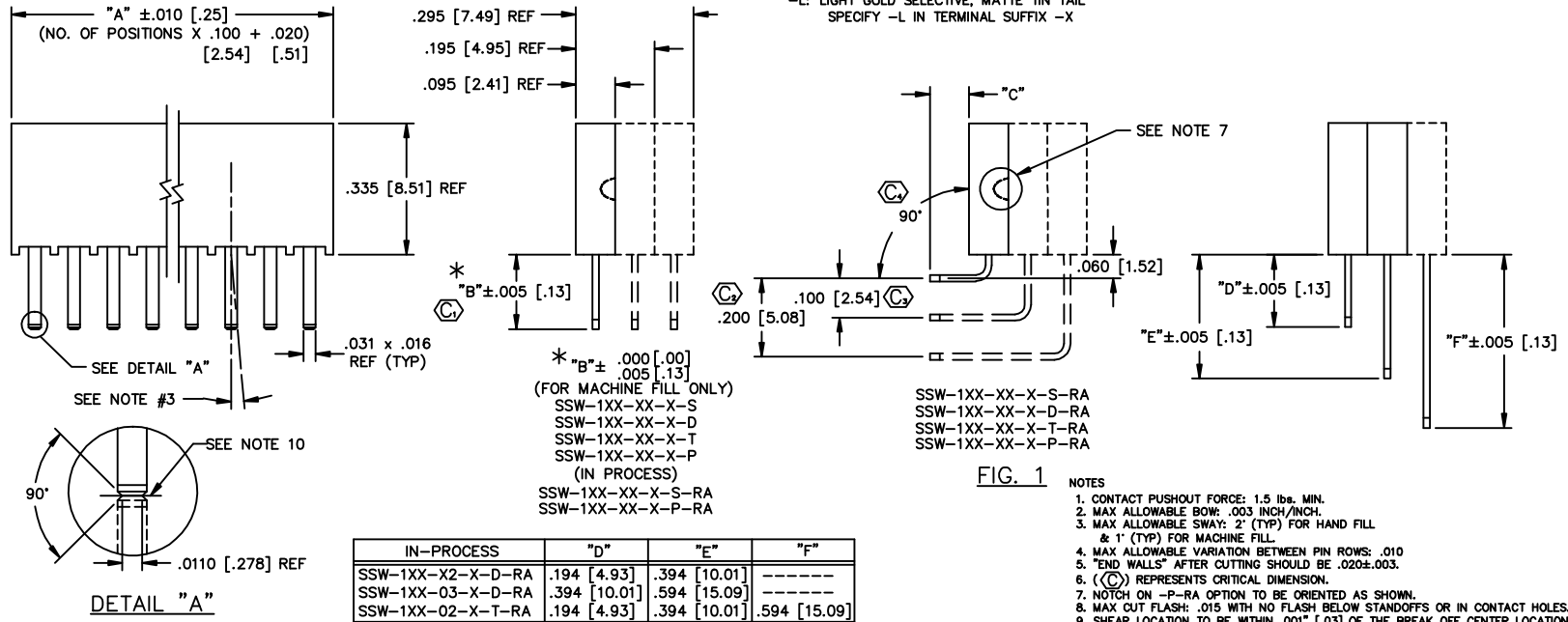
DIMENSIONS ARE IN INCHES	ONE PLACE DECIMALS ±	THREE PLACE DECIMALS ± .005 [1.3]	ANGLES ± 2°
	TWO PLACE DECIMALS ± .01 [2.5]	FOUR PLACE DECIMALS ±	

TITLE: ASSEMBLY, SOCKET STRIP
.016 X .031 TAIL
[.41] [.79]

DWG NO: SSW-1XX-XX-XXX-X-XX-XXX-XX
SHEET 1 OF 2

SSW-1XX-XX-XXX-X-XX-XXX-XX

- BODY LENGTH SPEC**
-01 THRU -50
(-P OPTION: 36 POS MAX.)
- CONTACT SPECIFICATION**
(SEE TABLE 1)
-01 THRU -06 (STD. INS. FORCE)
-21 THRU -24 (LOW INS. FORCE)
- PLATING SPECIFICATION**
-G: GOLD- SPECIFY -G IN CONTACT SUFFIX -X
-T: TIN- SPECIFY -T IN CONTACT SUFFIX -X
(CONTACT -21 THRU -24 N/A)
-S: SELECTIVE, MATTE TIN TAIL- SPECIFY -S IN CONTACT SUFFIX -X
-H: HEAVY- SPECIFY -H IN CONTACT SUFFIX -X
-E: EXTRA HEAVY- SPECIFY -E IN CONTACT SUFFIX -X
(CONTACT -01 & -02 STRAIGHT ONLY)
-F: FLASH SELECTIVE, MATTE TIN TAIL- SPECIFY -F IN CONTACT SUFFIX -X
-P: GOLD FLASHED PALLADIUM NICKEL- SPECIFY -P IN CONTACT SUFFIX -X
-STL: SELECTIVE TIN/LEAD- SPECIFY -STL IN TERMINAL SUFFIX -XX
-TL: TIN/LEAD- SPECIFY -TL IN TERMINAL SUFFIX -X
(AVAILABLE ONLY ON LEAD STYLES -01.)
-TM: MATTE TIN SPECIFY -T IN TERMINAL SUFFIX -X
(CONTACT -21 THRU -24 N/A)
-SM: HEAVY GOLD SELECTIVE, MATTE TIN TAIL
SPECIFY -S IN TERMINAL SUFFIX -X
-FM: FLASH GOLD SELECTIVE, MATTE TIN TAIL
SPECIFY -F IN TERMINAL SUFFIX -X
-L: LIGHT GOLD SELECTIVE, MATTE TIN TAIL
SPECIFY -L IN TERMINAL SUFFIX -X
- OPTION**
-LL: LOCKING LEAD (SEE SHEET 2)
(N/A IN SINGLE ROW, 1 & 2 POSITION)
- POLARIZING OPTION**
INDICATE POS- SEE FIG. 3
- OPTION**
-RA: RIGHT ANGLE (SEE FIG. 1)
(CONTACT -01 & -21 N/A)
- BODY SPECIFICATION**
-S: USE SSW-XX-S
-D: USE SSW-XX-D
-T: USE SSW-50-T
-P: USE SSW-36-P
-Q: USE SSW-50-T (TRIPLE ROW WITH ONLY 2 OUTER ROWS FILLED)



- NOTES**
- CONTACT PUSHOUT FORCE: 1.5 lbs. MIN.
 - MAX ALLOWABLE BOW: .003 INCH/INCH.
 - MAX ALLOWABLE SWAY: 2' (TYP) FOR HAND FILL & 1' (TYP) FOR MACHINE FILL.
 - MAX ALLOWABLE VARIATION BETWEEN PIN ROWS: .010
 - "END WALLS" AFTER CUTTING SHOULD BE .020±.003.
 - (C) REPRESENTS CRITICAL DIMENSION.
 - NOTCH ON -P-RA OPTION TO BE ORIENTED AS SHOWN.
 - MAX CUT FLASH: .015 WITH NO FLASH BELOW STANDOFFS OR IN CONTACT HOLES.
 - SHEAR LOCATION TO BE WITHIN .001" [.03] OF THE BREAK OFF CENTER LOCATION.
 - SHEAR LOCATION TO BE WITHIN .001" [.03] OF THE BREAK OFF CENTER LOCATION FOR MACHINE FILL.

MATERIAL:

INSULATORS:
FLAMMABILITY RATING UL94 V-0
SINGLE
PRIMARY MATERIAL: LCP
COLOR: BLACK

DOUBLE
PRIMARY MATERIAL: LCP
COLOR: BLACK

TRIPLE ROW
MATERIAL: PCT
COLOR: BLACK

TERMINAL:
PHOSPHOR BRONZE, SPRING TEMPER,
ALLOY 511 OR 510
(TENSILE STRENGTH 90-100 KSI)
(YIELD STRENGTH @ 2% OFFSET
88-98 KSI) PER MIL-B-13501
THICKNESS: .0250±.001 [6.35±.03]

520 PARK EAST BLVD. NEW ALBANY, INDIANA 47150
PHONE (812) 944-6733 P.O. BOX 1147
CODE 55322

MADE BY: PURVIS 6-12-87

SSW-1XX-XX-XXX-X-XX-XXX-XX
SHEET 1 OF 2

PROPRIETARY NOTE
THIS DOCUMENT CONTAINS INFORMATION CONFIDENTIAL AND PROPRIETARY TO SPATCO, INC. AND SHALL NOT BE REPRODUCED OR TRANSMITTED IN ANY FORM OR BY ANY MEANS, ELECTRONIC OR MECHANICAL, INCLUDING PHOTOCOPYING, RECORDING, OR BY ANY INFORMATION STORAGE AND RETRIEVAL SYSTEM, WITHOUT THE WRITTEN CONSENT OF SPATCO, INC.