

ONE PLACE DECIMALS ±1 [2.54]	THREE PLACE DECIMALS ±.002 [.05]	ANGLES ±2°	TITLE: .050 x .050 TERMINAL STRIP	DWG NO: TFC-1XX-XX-XX-D-XX
TWO PLACE DECIMALS ±0.25 [6.35]	FOUR PLACE DECIMALS ±.0020 [.05]			SHEET 1 OF 3

- TFC-1XX-XX-XX-D-XX
- NO. OF POSITIONS**
LEAD STYLE -01: (-5 THRU -50 ALL POSITIONS AVAILABLE)
LEAD STYLE -02: (-5 THRU -50 ALL POSITIONS AVAILABLE)
ALL OTHER LEAD STYLES: (-5 THRU -50 MULTIPLES OF 5 ONLY)
LEAD STYLES -11, -12
POSITIONS -12, -16, & -17 ALSO AVAILABLE
LEAD STYLES -21, -22, -31, -32
POSITIONS -12 & -13 ALSO AVAILABLE
- LEAD STYLE**
THROUGH HOLE -01: (SEE FIG. 1) -02: (SEE FIG. 2)
-11: (SEE FIG. 1) -12: (SEE FIG. 2)
-21: (SEE FIG. 1) -22: (SEE FIG. 2)
-31: (SEE FIG. 1) -32: (SEE FIG. 2)
(SEE TABLE 1)
- PLATING SPECIFICATION**
-F: FLASHED GOLD SELECTIVE
-L: LIGHT SELECTIVE
-LM: LIGHT GOLD SELECTIVE, MATTE TIN TAIL
-FM: FLASH GOLD SELECTIVE, MATTE TIN TAIL
- NOTES:**
1. MINIMUM PUSHOUT FORCE TO BE 1 lbs. MIN
2. COPLANARITY: .004=POS 02 THRU 26
.006=POS 27 THRU 50
3. MANUFACTURING IN PROCESS DIMENSION DESIGNED TO ACHIEVE FINISHED ASSEMBLY.
4. (C) REPRESENTS CRITICAL DIMENSION.
5. [] DIMENSIONS ARE IN MILLIMETERS.
6. MEASURED FROM BEND.
7. SIDES OF PLASTIC BODIES ON ALL LEADSTYLES EXCEPT THE -01 & -02 WILL BE SOLID AND NOT RIBBED
8. NOTE DELETED
9. .003 MAXIMUM TERMINAL BURR
10. .005 MAXIMUM HEIGHT VARIATION BETWEEN ANY TWO PINS.
11. MEASURE FROM TIPS OF PIN.
- OPTIONS**
-A: ALIGNMENT PIN (USE TFM-XX-D-XX-A) (NOT AVAILABLE WITH -RA)
-LC: LOCKING CLIP (USE LC-05-TM) (NOT AVAILABLE WITH -RA)
-TR: TAPE AND REEL (FOR -X2 ONLY) (NOT AVAILABLE WITH -RA)
-K: POLYAMIDE FILM (SEE FIG. 3, SHEET 2)
-P: PICK & PLACE PAD (USE PPP-04) (NOT AVAILABLE WITH -RA)
-RA: RIGHT ANGLE (AVAILABLE ONLY IN LEAD STYLE: -01 SEE FIG. 8 SHEET 2)
- BODY SPECIFICATION**
-D: DOUBLE ROW

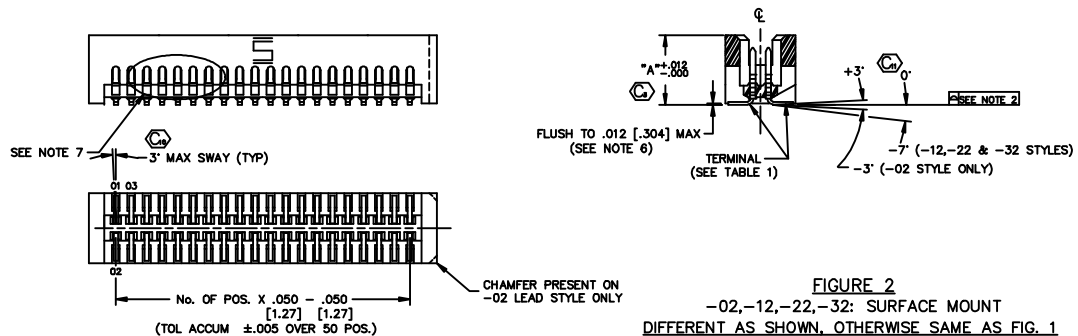


TABLE 1

LEAD STYLE	PLATING	BODY	"A"	TERMINAL	"B"	"C"	"D"	"E"
-01-RA	-F, -L, -FM, -LM	TFM-XX-D-02-X	.2200 [5.59]	T-1R16-02-XX T-1R16-03-XX	.015 [3.8]	.427 ± .004 [10.85 ± .10] / ± .002 [.05]	.133 [3.38]	.230 [5.84]
-01, -02	-F, -FM -L, -LM	TFM-XX-D-01-X	.2200 [5.59]	T-1R16-01-XX-2 T-1R16-01-XX-2	.015 [3.8]	.427 ± .004 [10.85 ± .10] / ± .002 [.05]	.133 [3.38]	.230 [5.84]
-11, -12	-F, -L, -FM, -LM	TFM-XX-D-02-X	.2900 [7.37]	T-1R20-03-XX	.030 [7.6]	.644 ± .004 [16.36 ± .10] / ± .002 [.05]	.130 [3.30]	.300 [7.62]
-21, -22	-F, -L, -FM, -LM	TFM-XX-D-03-X	.3600 [9.14]	T-1R20-04-XX	.100 [2.54]	.644 ± .004 [16.36 ± .10] / ± .002 [.05]	.130 [3.30]	.370 [2.00]
-31, -32	-F, -L, -FM, -LM	TFM-XX-D-04-X	.4350 [11.05]	T-1R20-02-XX	.175 [4.45]	.644 ± .004 [16.36 ± .10] / ± .002 [.05]	.130 [3.30]	.445 [11.30]

PROPRIETARY INFORMATION
SAMSUNG ELECTRONICS CO.
ALL RIGHTS RESERVED

samtec MISC WKTD TFC-MKT
520 PARK EAST BLVD. NEW ALBANY, INDIANA 47150
PHONE (812) 944-8733 P.O. BOX 1147
CODE 55322
MADE IN: BRATCHER 5-25-01 TFC-1XX-XX-XX-D-XX
SHEET 1 OF 3