

(1.27 mm) .050"

GFZ SERIES

ULTRA LOW PROFILE ONE PIECE ARRAY

SPECIFICATIONS

For complete specifications and recommended PCB layouts see www.samtec.com?GFZ

Insulator Material: Liquid Crystal Polymer

Contact Material: BeCu

Plating: Au over 50µ" (1.27 µm) Ni

Operating Temp Range: -55°C to +125°C

RoHS Compliant: Yes

Processing:

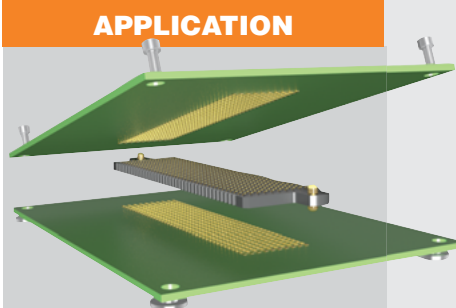
For important processing information go to www.samtec.com?GFZ under Technical Library

RECOGNITIONS

For complete scope of recognitions see www.samtec.com/quality

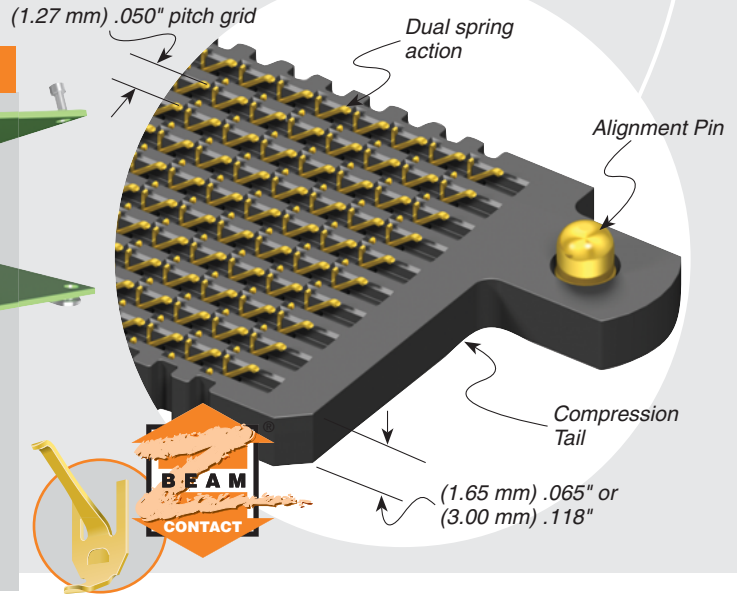


APPLICATION



Since processing conditions affect mated heights, it is highly recommended to contact ipg@samtec.com about processing.

Board-to-board height
(1.75 mm) .069" ± (0.05 mm) .002"
(-01 lead style) and
(3.09 mm) .122" ± (0.05 mm) .002"
(-03 lead style)



GFZ	POSITIONS PER ROW	LEAD STYLE	PLATING OPTION	NUMBER OF ROWS	AD
	-20, -30, -40 (See chart for available callouts)	Specify LEAD STYLE from chart below.	-G = 30µ" (0.76 µm) Gold	-10 (See chart for available callouts)	

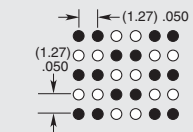
GFZ 1 mm Stack Height	Rated @ 3dB Insertion Loss*
Single-Ended Signaling	17 GHz / 34 Gbps
Differential Pair Signaling	19 GHz / 38 Gbps

*Test board losses de-embedded from performance data.
Complete test data available at www.samtec.com?GFZ or contact sig@samtec.com

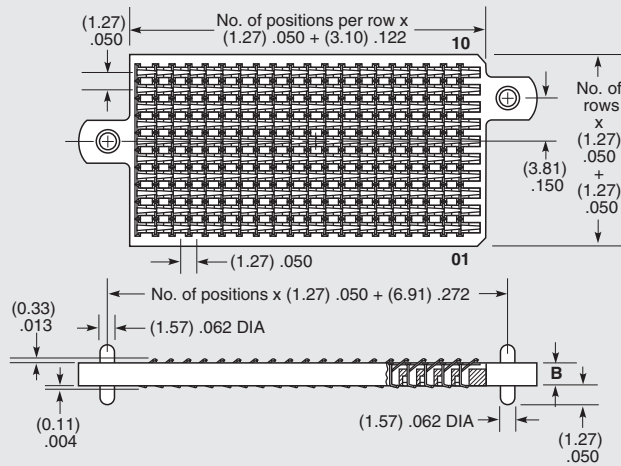
28⁺
G b p s

AVAILABLE PART NUMBERS			
POSITIONS PER ROW	NUMBER OF ROWS	TOTAL PINS	PART NUMBER
20	10	200	GFZ-20-01-G-10-AD
30	10	300	GFZ-30-01-G-10-AD GFZ-30-03-G-10-AD
40	10	400	GFZ-40-01-G-10-AD GFZ-40-03-G-10-AD

DIFFERENTIAL APPLICATIONS



ARRAY	PAIR COUNT
20x10	50
30x10	75
40x10	100



LEAD STYLE	B
-01	(1.65) .065
-03	(3.00) .118

ALSO AVAILABLE (MOQ Required)

- Other grid sizes
- No alignment option
- Contact Samtec.

Note: Some lengths, styles and options are non-standard, non-returnable.