

DO NOT  
SCALE FROM  
THIS PRINT

DESIGNED & DIMENSIONED  
IN INCHES[MILLIMETERS]

GPPK-XX-XX-X

PLUG

LEAD STYLE

-01: .600  
(USE GP-P-01-01)  
-02: .930  
(USE GP-P-02-01)

OPTION

-N: GP-P-XX-01 ONLY,  
NO SCREW INCLUDED  
(LEAVE BLANK FOR KIT,  
SEE NOTE 2)

THREADING

-01: M3 x 0.5

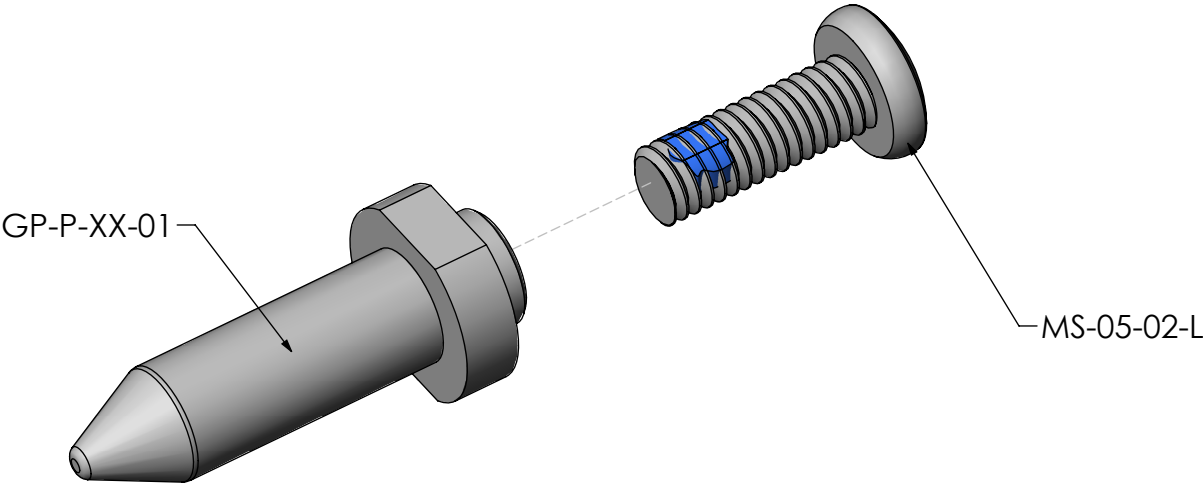
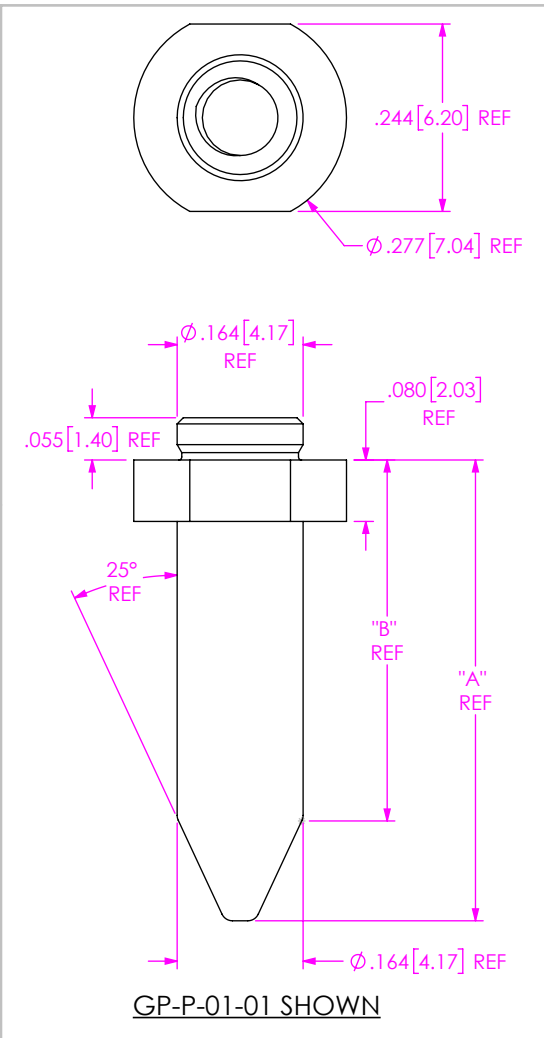
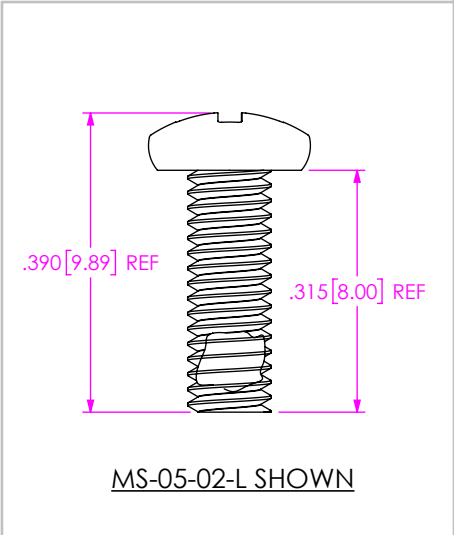


TABLE 1		
LEAD STYLE	"A"	"B"
-01	.600	.470
-02	.930	.800



NOTES:


1. PARTS TO BE PACKAGED IN ZBAG-03.00-04-2.0,  
KIT WILL HAVE BOTH PARTS PACKAGED TOGETHER.
2. KIT TO INCLUDE ONE GP-P-XX-01 AND ONE MS-05-02-L.

UNLESS OTHERWISE SPECIFIED,  
DIMENSIONS ARE IN INCHES.  
TOLERANCES ARE:  
DECIMALS ANGLES  
.XX: ±.01 [.3] 2°  
.XXX: ±.005 [.13]  
.XXXX: ±.0020 [.051]

PROPRIETARY NOTE  
THIS DOCUMENT CONTAINS INFORMATION  
CONFIDENTIAL AND PROPRIETARY TO  
SAMTEC, INC. AND SHALL NOT BE REPRODUCED  
OR TRANSFERRED TO OTHER DOCUMENTS OR  
DISCLOSED TO OTHERS OR USED FOR ANY  
PURPOSE OTHER THAN THAT WHICH IT WAS  
OBTAINED WITHOUT THE EXPRESSED WRITTEN  
CONSENT OF SAMTEC, INC.

MATERIAL: DO NOT SCALE DRAWING  
GUIDE POST: SUS-301  
SCREW: 303 STAINLESS STEEL

SHEET SCALE: 2:1



520 PARK EAST BLVD, NEW ALBANY, IN 47150  
PHONE: 812-944-6733 FAX: 812-948-5047  
e-Mail: info@SAMTEC.com code 55322

DESCRIPTION: SUREWARE RA GUIDE POST

DWG. NO. GPPK-XX-XX-X

BY: VICKY Z 12/23/2010 SHEET 1 OF 1