

DO NOT
SCALE FROM
THIS PRINT

DESIGNED & DIMENSIONED
IN MILLIMETERS[INCHES]

FIGURE 1
MPS-V MATED WITH MPT-V

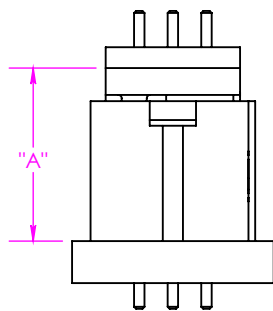


FIGURE 2
MPS-V MATED WITH MPT-RA

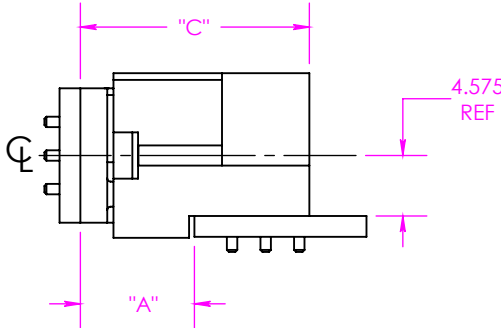


FIGURE 3
MPS-RA MATED WITH MPT-V

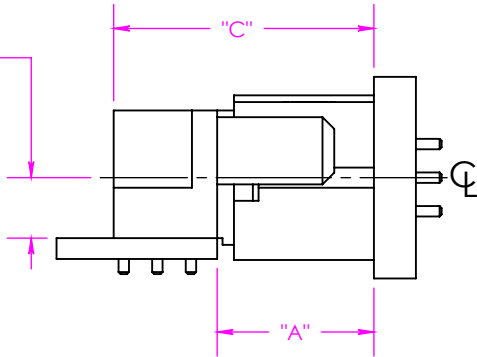


FIGURE 4
MPS-RA MATED WITH MPT-RA

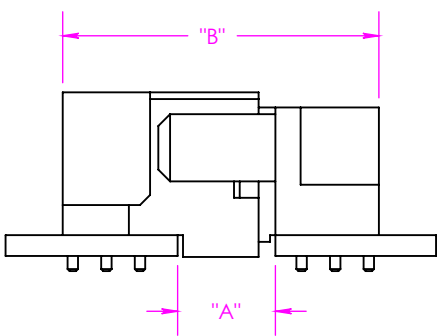


TABLE 1

	Fully Mated Board to Board Dimension ("A")	Max Board to Board Dimension ("A")	Fully Mated Connector to Connector Dimension ("B")	Max Connector to Connector Dimension ("B")	Fully Mated Connector to Board Dimension ("C")	Max Connector to Board Dimension ("C")	Min Contact Wipe	Max Contact Wipe
MPS-V / MPT-V (FIG 1)	SEE TABLE 2	SEE TABLE 2 + 2.03 [.080]	N/A	N/A	N/A	N/A	0.38 [.015]	2.41 [.095]
MPS-V / MPT-RA (FIG 2)	SEE TABLE 3	SEE TABLE 3 + 2.03 [.080]	N/A	N/A	SEE TABLE 3	SEE TABLE 3 + 2.03 [0.080]	0.38 [.015]	2.41 [.095]
MPS-RA / MPT-V (FIG 3)	SEE TABLE 4	SEE TABLE 4 + 2.03 [.080]	N/A	N/A	SEE TABLE 4	SEE TABLE 4 + 2.03 [0.080]	0.38 [.015]	2.41 [.095]
MPS-RA / MPT-RA (FIG 4)	SEE TABLE 5	SEE TABLE 5 + 1.20 [.047]	SEE TABLE 5	SEE TABLE 5 + 1.20 [.047]	N/A	N/A	0.38 [.015]	1.58 [.062]

TABLE 2

		MPT-V LEAD STYLE
		-6.30
MPS-V LEAD STYLE	-7.70	13.81 [.544]
	-9.70 * NOT TOOLED	15.81 [.622]

TABLE 3

		MPT-RA LEAD STYLE	
		-01	
		"A"	"C"
MPS-V LEAD STYLE	-7.70	8.62 [.339]	17.31 [.685]
	-9.70 * NOT TOOLED	10.62 [.418]	19.31 [.760]

TABLE 4

		MPT-V LEAD STYLE	
		-6.30	
		"A"	"C"
MPS-RA LEAD STYLE	-01	12.66 [.498]	20.47 [.806]

TABLE 5

		MPT-RA LEAD STYLE	
		-01	
		"A"	"B"
MPS-RA LEAD STYLE	-01	7.39 [.291]	23.90 [.941]

NOTES:

1. ALL DIMENSIONS BASED ON NOMINAL VALUES FOR SAMTEC RECOMMENDED PCB LAYOUTS.
2. ALTHOUGH MAX DIMENSIONS ARE LISTED SAMTEC RECOMMENDS FULLY MATING COMPONENTS.

* PROPRIETARY NOTE *
THIS DOCUMENT CONTAINS CONFIDENTIAL AND PROPRIETARY INFORMATION AND ALL DESIGN, MANUFACTURING, REPRODUCTION, USE, PATENT RIGHTS AND SALES RIGHTS ARE EXPRESSLY RESERVED BY SAMTEC, INC. THIS DOCUMENT SHALL NOT BE DISCLOSED, IN WHOLE OR PART, TO ANY UNAUTHORIZED PERSON OR ENTITY NOR REPRODUCED, TRANSFERRED OR INCORPORATED IN ANY OTHER PROJECT IN ANY MANNER WITHOUT THE EXPRESS WRITTEN CONSENT OF SAMTEC, INC.



520 PARK EAST BLVD, NEW ALBANY, IN 47150
PHONE: 812-944-6733 FAX: 812-948-5047
e-Mail info@SAMTEC.com code 55322