

**THIS PRODUCT MANUFACTURED
WITH LEAD-FREE PROCESSING****DESIGNED & DIMENSIONED
IN MILLIMETERS[INCHES]**DO NOT
SCALE FROM
THIS PRINT

PCRF-XXX-XXXX-XX-XXX-X-X

No OF POSITIONS

-036
-064
-098
-164
(PER ROW)

LENGTH

-XXXX (MM)
(0100[04.0] MIN
(SEE NOTE 6)
(SEE NOTE 10)

COAX

-1: CCA-25M

RF GENDER

-P: PLUG

RF CONNECTOR

-SMA

END OPTION

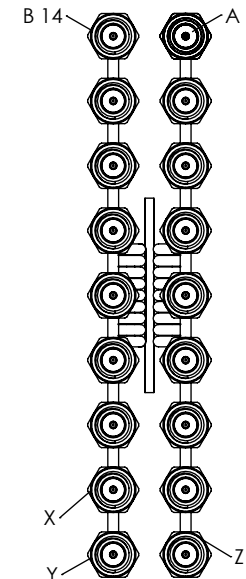
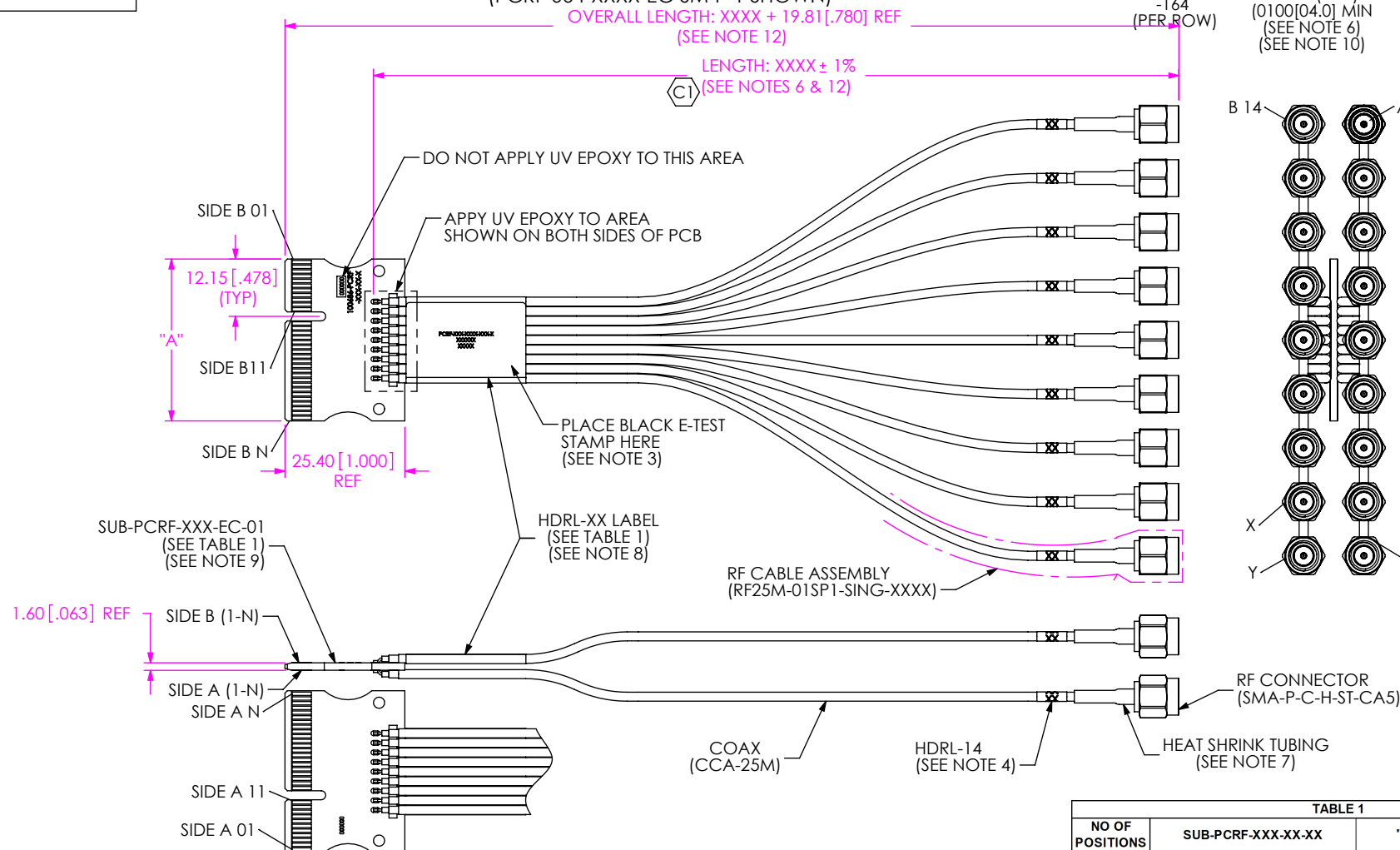
-EC: EDGE CARD
-EM: EDGE MOUNT
(SEE SHT 2, TABLE 5)

TABLE 3 - EC ONLY				
No OF POSITIONS	X	Y	Z	
036	B 15	A 17	A 16	
064	B 28	A 30	A 29	
098	B 46	A 48	A 47	
164	B 79	A 81	A 80	



NOTES:

1. REPRESENTS A CRITICAL DIMENSION.
2. ALL ASSEMBLIES TO BE 100% ELECTRICALLY TESTED FOR SHORTS & OPENS.
3. ALL ASSEMBLIES TO BE 100% HI-POT TESTED AT 300V. AFTER FINAL ELECTRICAL TEST, PLACE BLACK E-TEST STAMP ON HDRL-XX WHERE SHOWN. DO NOT OVERLAP LABEL INFO.
4. WRAP HDRL-14 LABEL AROUND EACH CABLE; EACH LABEL TO INCLUDE CORRESPONDING CARD EDGE PAD NUMBER (-EC REF TABLE 3, -EM REF TABLE 5). NUMBER TO BE PRINTED ON LABEL TWO TIMES SO IT CAN BE VIEWED FROM ANY ANGLE (EX. "A14").
5. PACKAGE ASSEMBLIES IN ANTI-STATIC & STATIC DISSIPATION BAGS.
6. LENGTH IS EQUAL TO THE CORRESPONDING RFXXX OVERALL CABLE LENGTH. PCRF LENGTH IS METRIC AND RFXXX LENGTH IS METRIC.
7. RF CONNECTOR TO CABLE TRANSITION AREA TO BE COVERED WITH SHRINK WRAP JACKET.
8. HDRL-XX LABEL TO BE PLACED ON TOP SET OF CABLES AS SHOWN; LABEL TO CONTAIN PART NUMBER, SHOP ORDER, & DATE CODE.
9. EDGE CARD DESIGNED TO MATE WITH PCI EXPRESS CONNECTOR.
10. CABLE LENGTHS LONGER THAN 1016 MILLIMETERS ARE NOT SUPPORTED BY S.I. TEST DATA.
11. NO POWER LINES CREATES A NO CONNECT CONDITION. SIDE B POS 1, 2, & 3 ARE NETS. SIDE A POS 9 & 10 ARE NETS. 3.3V AUX IS NOT INCLUDED IN THE 3.3V NET.
12. FOR CABLE LENGTHS LESS THAN 127MM, CABLE LENGTH AND OVERALL LENGTH TOLERANCE IS ±1.27MM. FOR CABLE LENGTHS GREATER THAN 127MM, USE ±1% FOR BOTH.

TABLE 1					
NO OF POSITIONS	SUB-PCRF-XXX-XX-XX	"A"	N	QTY OF COAX CABLES	LABEL
-36	SUB-PCRF-036-EC-01	20.30 [0.799]	18	6	HDRL-11
-64	SUB-PCRF-064-EC-01	34.30 [1.350]	32	18	HDRL-13
-98	SUB-PCRF-098-EC-01	51.30 [2.020]	49	34	HDRL-13
-164	SUB-PCRF-164-EC-01	84.30 [3.319]	82	66	HDRL-13

UNLESS OTHERWISE SPECIFIED,
DIMENSIONS ARE IN MILLIMETERS.

TOLERANCES ARE:

DECIMALS

.X: ±0.3 [0.01]

.XX: ±0.13 [0.005]

.XXX: ±0.051 [0.0020]

ANGLES

2 °

PROPRIETARY NOTE

THIS DOCUMENT CONTAINS INFORMATION CONFIDENTIAL AND PROPRIETARY TO SAMTEC, INC. AND SHALL NOT BE REPRODUCED OR TRANSFERRED TO OTHER DOCUMENTS OR DISCLOSED TO OTHERS OR USED FOR ANY PURPOSE OTHER THAN THAT WHICH IT WAS OBTAINED WITHOUT THE EXPRESSED WRITTEN CONSENT OF SAMTEC, INC.

DO NOT SCALE DRAWING

SHEET SCALE: 1:1.33333

samtec

520 PARK EAST BLVD, NEW ALBANY, IN 47150
PHONE: 812-944-6733 FAX: 812-948-5047
e-Mail: info@SAMTEC.com code 55322

DESCRIPTION:

PCRF CABLE ASSEMBLY

DWG. NO.

PCRF-XXX-XXXX-XX-XXX-X-X

BY: J. BORGELT 1/22/07

SHEET 1 OF 3

FIG 2
-EM OPTION
SAME AS FIG 1 EXCEPT WHERE SHOWN
(PCRF-036-XXXX-EM-SMA-P-1)

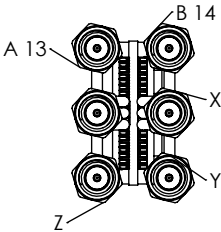
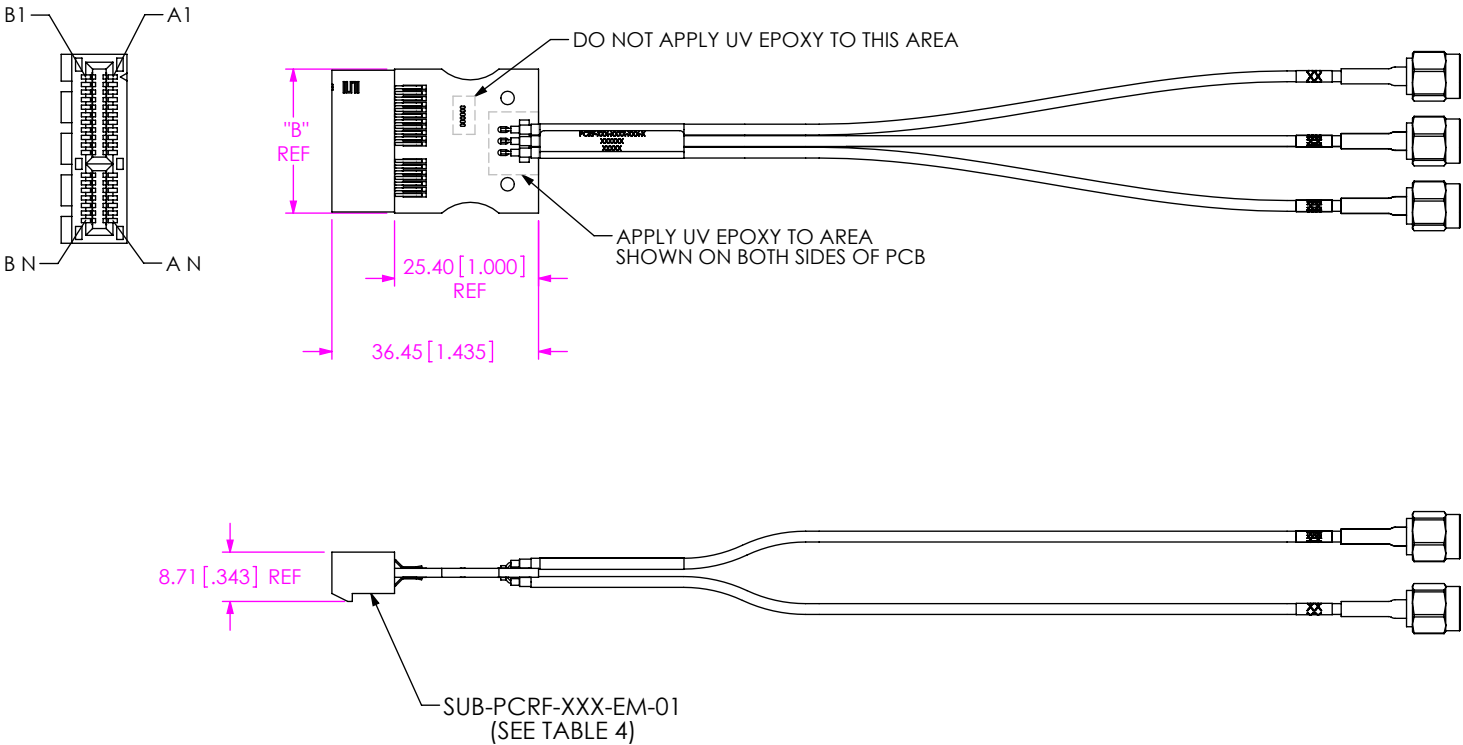
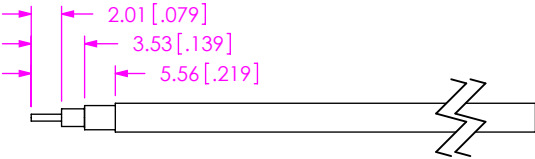


TABLE 5 - EM ONLY			
No OF POSITIONS	X	Y	Z
036	B 15	A 17	A 16
064	B 28	A 30	A 29
098	B 46	A 48	A 47
164	B 79	A 81	A 80

TABLE 4 (PCRF-XXX-XXXX-EM-XXX-X-X)					
NO OF POSITIONS	SUB-PCRF-XXX-EM-XX	"B"	N	QTY OF COAX CABLES	LABEL
-36	SUB-PCRF-036-EM-01	25.40 [1.000]	18	6	HDRL-11
-64	SUB-PCRF-064-EM-01	39.40 [1.551]	32	18	HDRL-13
-98	SUB-PCRF-098-EM-01	56.39 [2.220]	49	34	HDRL-13
-164	SUB-PCRF-164-EM-01	89.41 [3.520]	82	66	HDRL-13

RECOMMENDED CABLE STRIPPING



PROPRIETARY NOTE
THIS DOCUMENT CONTAINS INFORMATION
CONFIDENTIAL AND PROPRIETARY TO
SAMTEC, INC. AND SHALL NOT BE REPRODUCED
OR TRANSFERRED TO OTHER DOCUMENTS OR
DISCLOSED TO OTHERS OR USED FOR ANY
PURPOSE OTHER THAN THAT WHICH IT WAS
OBTAINED WITHOUT THE EXPRESSED WRITTEN
CONSENT OF SAMTEC, INC.

samtec

520 PARK EAST BLVD, NEW ALBANY, IN 47150
PHONE: 812-944-6733 FAX: 812-948-5047
e-Mail info@SAMTEC.com code 55322

SHEET SCALE: 1:2

DESCRIPTION:
PCRF CABLE ASSEMBLY

DWG. NO.
PCRF-XXX-XXXX-XX-XXX-X-X

BY: J. BORGELT 1/22/07 SHEET 2 OF 3

REVISION L

TABLE 2 PIN OUT													
SIDE B POSITION NUMBERS	DESCRIPTION	B SIDE CABLE LABELS	SIDE A POSITION NUMBERS	DESCRIPTION	A SIDE CABLE LABELS	SIDE B POSITION NUMBERS	DESCRIPTION	B SIDE CABLE LABELS	SIDE A POSITION NUMBERS	DESCRIPTION	A SIDE CABLE LABELS		
1	NO CONNECT		1	NO CONNECT		42	SIGNAL	B 42	42	GROUND			
2	NO CONNECT		2	GROUND		43	GROUND		43	SIGNAL	A 43		
3	NO CONNECT		3	GROUND		44	GROUND		44	SIGNAL	A 44		
4	GROUND		4	GROUND		45	SIGNAL	B 45	45	GROUND			
5	NO CONNECT		5	NO CONNECT		46	SIGNAL	B 46	46	GROUND			
6	NO CONNECT		6	NO CONNECT		47	GROUND		47	SIGNAL	A 47		
7	GROUND		7	NO CONNECT		48	NO CONNECT		*48	SIGNAL	A 48		
8	GROUND		8	NO CONNECT		49	GROUND		49	GROUND			
9	NO CONNECT		9	NO CONNECT		END OF 98 POSITION EDGE CARD							
10	NO CONNECT		10	NO CONNECT		50	SIGNAL	B 50	50	NO CONNECT			
11	NO CONNECT		11	NO CONNECT		51	SIGNAL	B 51	51	GROUND			
MECHANICAL KEY						52	GROUND		52	SIGNAL	A 52		
12	NO CONNECT	B 14	12	GROUND		53	GROUND		53	SIGNAL	A 53		
13	GROUND		13	SIGNAL	A 13	54	SIGNAL	B 54	54	GROUND			
14	SIGNAL		14	SIGNAL	A 14	55	SIGNAL	B 55	55	GROUND			
15	SIGNAL		15	GROUND		56	GROUND		56	SIGNAL	A 56		
16	GROUND		16	SIGNAL	A 16	57	GROUND		57	SIGNAL	A 57		
17	NO CONNECT		*17	SIGNAL	A 17	58	SIGNAL	B 58	58	GROUND			
18	GROUND		18	GROUND		59	SIGNAL	B 59	59	GROUND			
END OF 36 POSITION EDGE CARD						60	GROUND		60	SIGNAL	A 60		
19	SIGNAL	B 19	19	NO CONNECT		61	GROUND		61	SIGNAL	A 61		
20	SIGNAL	B 20	20	GROUND		62	SIGNAL	B 62	62	GROUND			
21	GROUND		21	SIGNAL		A 21	63	SIGNAL	B 63	63		GROUND	
22	GROUND		22	SIGNAL	A 22	64	GROUND		64	SIGNAL	A 64		
23	SIGNAL	B 23	23	GROUND		65	GROUND		65	SIGNAL	A 65		
24	SIGNAL	B 24	24	GROUND		66	SIGNAL	B 66	66	GROUND			
25	GROUND		25	SIGNAL		A 25	67	SIGNAL	B 67	67		GROUND	
26	GROUND		26	SIGNAL	A 26	68	GROUND		68	SIGNAL	A 68		
27	SIGNAL	B 27	27	GROUND		69	GROUND		69	SIGNAL	A 69		
28	SIGNAL	B 28	28	GROUND		70	SIGNAL	B 70	70	GROUND			
29	GROUND		29	SIGNAL		A 29	71	SIGNAL	B 71	71		GROUND	
30	NO CONNECT		*30	SIGNAL	A 30	72	GROUND		72	SIGNAL	A 72		
31	NO CONNECT		31	GROUND		73	GROUND		73	SIGNAL	A 73		
32	GROUND		32	NO CONNECT		74	SIGNAL	B 74	74	GROUND			
END OF 64 POSITION EDGE CARD						75	SIGNAL	B 75	75	GROUND			
33	SIGNAL	B 33	33	NO CONNECT		76	GROUND		76	SIGNAL	A 76		
34	SIGNAL	B 34	34	GROUND			77		GROUND	77	SIGNAL	A 77	
35	GROUND		35	SIGNAL	A 35	78	SIGNAL	B 78	78	GROUND			
36	GROUND		36	SIGNAL	A 36	79	SIGNAL	B 79	79	GROUND			
37	SIGNAL	B 37	37	GROUND		80	GROUND		80	SIGNAL	A 80		
38	SIGNAL	B 38	38	GROUND			81		NO CONNECT	*81	SIGNAL	A 81	
39	GROUND		39	SIGNAL	A 39	82	NO CONNECT		82	GROUND			
40	GROUND		40	SIGNAL	A 40	END OF 164 POSITION EDGE CARD							
41	SIGNAL	B 41	41	GROUND									

* IF THIS IS LAST POSITION ON CARD
THEN IT WILL BE CROSSED OVER AND
BE LAST SMA ON SIDE "B"

SIDE B POS 1, 2, & 3, SIDE A POS 9 & 10 NEED TO SEE NOTE 11.

PROPRIETARY NOTE
THIS DOCUMENT CONTAINS INFORMATION
CONFIDENTIAL AND PROPRIETARY TO
SAMTEC, INC. AND SHALL NOT BE REPRODUCED
OR TRANSFERRED TO OTHER DOCUMENTS OR
DISCLOSED TO OTHERS OR USED FOR ANY
PURPOSE OTHER THAN THAT WHICH IT WAS
OBTAINED WITHOUT THE EXPRESSED WRITTEN
CONSENT OF SAMTEC, INC.

SHEET SCALE: 3:4



520 PARK EAST BLVD, NEW ALBANY, IN 47150
PHONE: 812-944-6733 FAX: 812-948-5047
e-Mail info@SAMTEC.com code 55322

DESCRIPTION:
PCRF CABLE ASSEMBLY

DWG. NO.
PCRF-XXX-XXXX-XX-XXX-X-X

BY: J. BORGELT 1/22/07 SHEET 3 OF 3