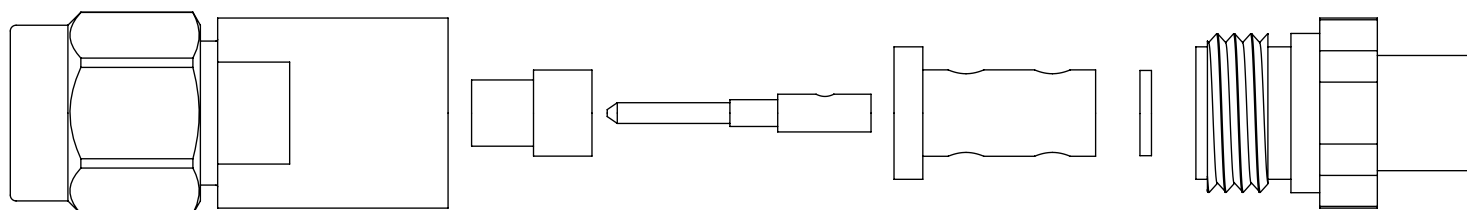
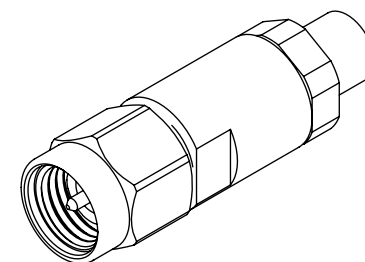
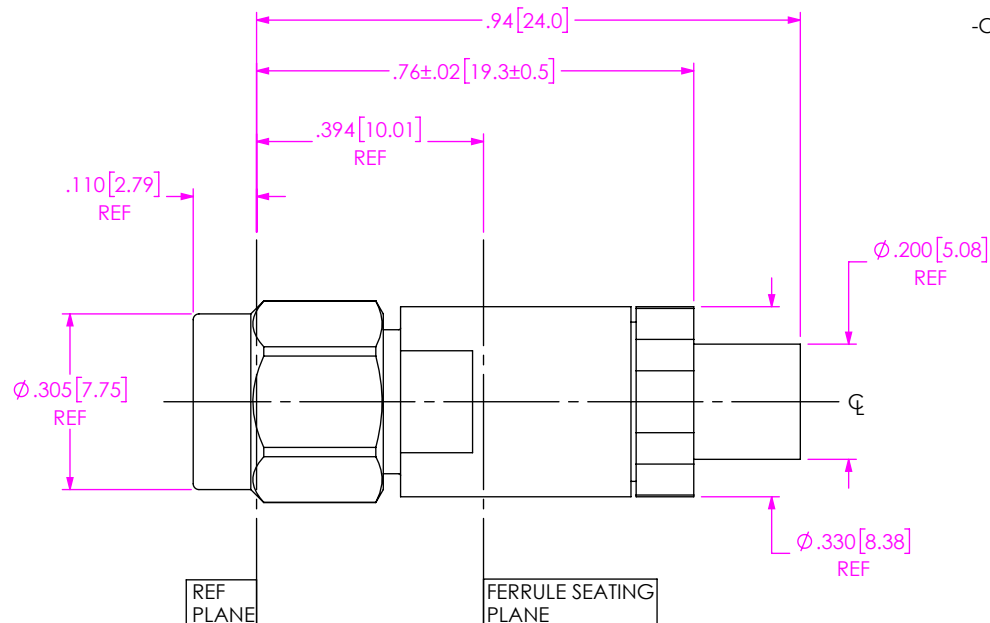


DO NOT
SCALE FROM
THIS PRINTDESIGNED & DIMENSIONED
IN INCHES

PRF01-P-C-EP-120B-SS

SERIES
-01: SMAGENDER
-P: PLUGTYPE
-C: CABLETERMINATION
-S: SOLDER CLAMPORIENTATION
-S: STRAIGHTCABLE TYPE
-120B: INSULATED WIRE 1201PLATING
-EP: 50 μ IN EXTRA HEAVY GOLD
CENTER CONTACT, PASSIVATED
OUTER CONTACTEXPLODED VIEW
NOT TO SCALE
(FOR CLARITY ONLY)

NOTES:

1. MATERIAL:
BODY, CLAMP NUT: STAINLESS STEEL.
GASKET: SILICONE RUBBER.
INSULATOR: PTFE.
SOLDER FERRULE: BRASS ALLOY
CONTACT, LOCK RING, RETURN RING: BERYLLIUM COPPER.

2. FINISH:
BODY, CLAMP NUT: PASSIVATED.
CONTACT, SOLDER FERRULE: GOLD OVER NICKEL PLATE,
50 μ IN MIN GOLD OVER 50 μ IN MIN NICKEL.

3. PCI P/N: 3160.

UNLESS OTHERWISE SPECIFIED,
DIMENSIONS ARE IN INCHES.

TOLERANCES ARE:

DECIMALS
.XX: \pm .01
.XXX: \pm .005
.XXXX: \pm .0005

ANGLES
1°

PROPRIETARY NOTE

THIS DOCUMENT CONTAINS CONFIDENTIAL AND PROPRIETARY INFORMATION AND ALL DESIGN, MANUFACTURING, REPRODUCTION, USE, PATENT RIGHTS AND SALES RIGHTS ARE EXPRESSLY RESERVED BY SAMTEC, INC. THIS DOCUMENT SHALL NOT BE DISCLOSED, IN WHOLE OR PART, TO ANY UNAUTHORIZED PERSON OR ENTITY NOR REPRODUCED, TRANSFERRED OR INCORPORATED IN ANY OTHER PROJECT IN ANY MANNER WITHOUT THE EXPRESS WRITTEN CONSENT OF SAMTEC, INC.

samtec

520 PARK EAST BLVD, NEW ALBANY, IN 47150
PHONE: 812-944-6733 FAX: 812-948-5047
e-Mail: info@SAMTEC.com code 55322

DO NOT SCALE DRAWING

SHEET SCALE: 3:1

DESCRIPTION:

SMA PLUG TO IW1201 CABLE

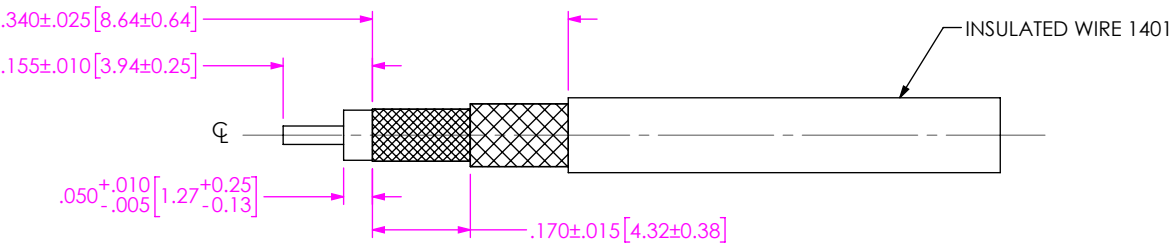
DWG. NO.

PRF01-P-C-EP-120B-SS

BY: JERRY SU

05/07/2019

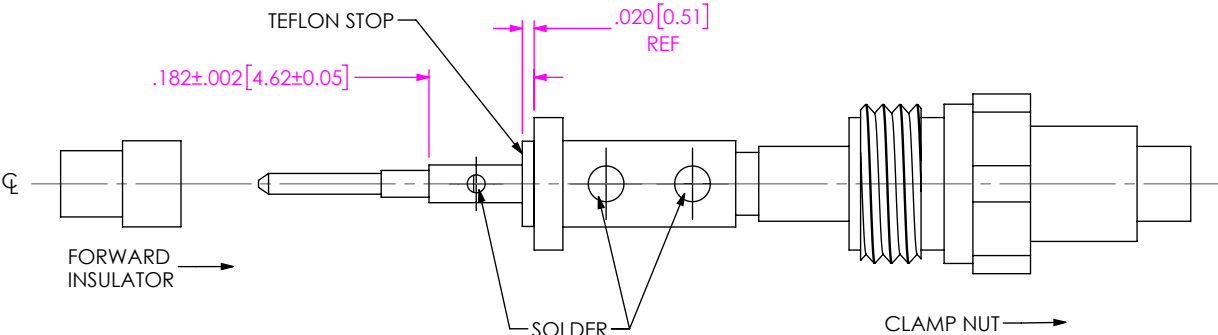
SHEET 1 OF 2



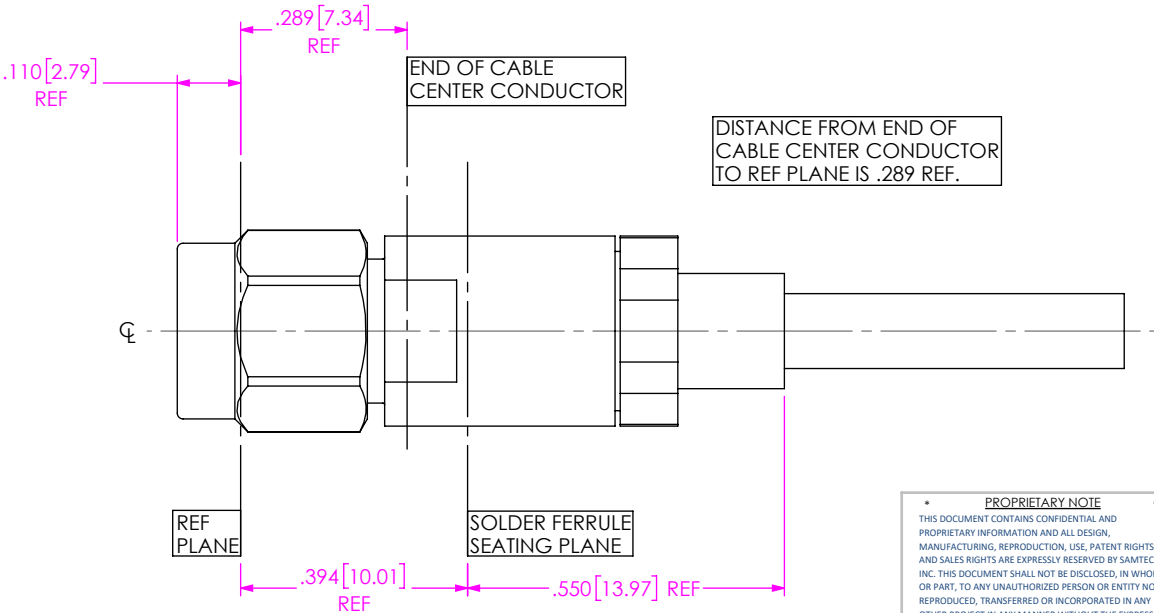
1A. TRIM CABLE AS SHOWN.

IN-PROCESS VIEW 1

- 2A. SLIDE CLAMP NUT OVER CABLE AS SHOWN.
- 2B. INSERT CABLE INTO SOLDER FERRULE UNTIL DIELECTRIC IS FLUSH WITH FERRULE FACE THEN SOLDER TO CABLE BRAID.
- 2C. SLIDE DIELECTRIC STOP OVER CABLE CENTER CONDUCTOR AND SOLDER CONTACT FLUSH TO STOP DIMENSION SHOWN.
- 2D. SLIDE FORWARD INSULATOR ONTO CONTACT IN ORIENTATION AS SHOWN.



IN-PROCESS VIEW 2



- 3A. INSERT CABLE/CONTACT SUB-ASSEMBLY INTO CONNECTOR UNTIL SEATED AND TIGHTEN CLAMP NUT TO 25-35 IN/LBS.

IN-PROCESS VIEW 3

<p>PROPRIETARY NOTE</p> <p>THIS DOCUMENT CONTAINS CONFIDENTIAL AND PROPRIETARY INFORMATION AND ALL DESIGN, MANUFACTURING, REPRODUCTION, USE, PATENT RIGHTS AND SALES RIGHTS ARE EXPRESSLY RESERVED BY SAMTEC, INC. THIS DOCUMENT SHALL NOT BE DISCLOSED, IN WHOLE OR PART, TO ANY UNAUTHORIZED PERSON OR ENTITY NOR REPRODUCED, TRANSFERRED OR INCORPORATED IN ANY OTHER PROJECT IN ANY MANNER WITHOUT THE EXPRESS WRITTEN CONSENT OF SAMTEC, INC.</p>	<p>samtec</p> <p>520 PARK EAST BLVD, NEW ALBANY, IN 47150 PHONE: 812-944-6733 FAX: 812-948-5047 e-Mail: info@SAMTEC.com code 55322</p>
<p>DO NOT SCALE DRAWING</p> <p>SHEET SCALE: 3:1</p>	<p>DESCRIPTION: SMA PLUG TO IW1201 CABLE</p> <p>DWG. NO. PRF01-P-C-EP-120B-SS</p> <p>BY: JERRY SU 05/07/2019 SHEET 2 OF 2</p>