

DO NOT
SCALE FROM
THIS PRINT

RFX8T-XXXXX-XXXXXX-XXXX

OVERALL ASSEMBLY LENGTH (OAL)
XXXX (MILLIMETERS) (0300 MIN)
(SEE NOTE 8)

CABLE CALLOUT
B8T: BELDEN 1855A CABLE (CCA-1855A)
C8T: BELDEN 4855R CABLE (CCA-4855R)

END 1 CONNECTOR
(SEE TABLE 3, SHT 2)

END 2 CONNECTOR OR PREPARATION
(SEE TABLE 3, SHT 2)

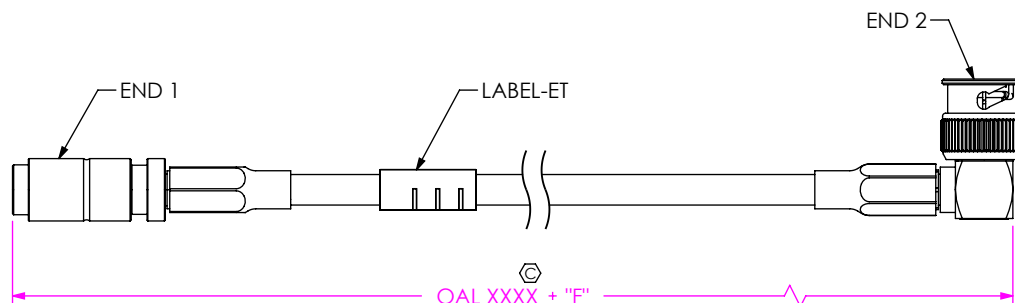


FIG 1
RFB8T-78SPX-79RPX-XXXX SHOWN

TABLE 2: FINAL ASSEMBLY LENGTH TOLERANCE	
LENGTH	"F"
0300-0500 [11.81-19.69]	+5.0 [.20]/-0.0 [.00]
0501-1100 [19.72-43.30]	+10.0 [.40]/-0.0 [.00]
>1100 [43.30]	± 1%

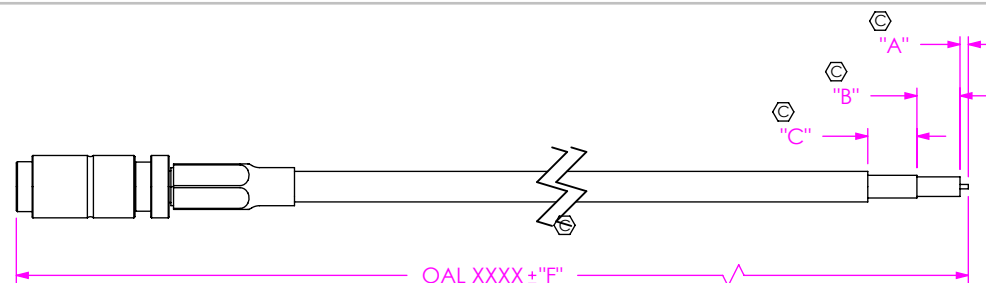


FIG 2
RFB8T-78SPX-172849-XXXX SHOWN (SEE NOTES 5 & 7)

"C" FORMAT: X.X mm
"B" FORMAT: X.X mm
"A" FORMAT: X.X mm

DO NOT LEAVE ANY SPACE BLANK,
EACH MUST CONTAIN A
NUMERIC CHARACTER 0 THRU 9.

NOTES:

1. \odot REPRESENTS A CRITICAL DIMENSION
2. ASSEMBLY TO BE 100% TESTED FOR OPENS, SHORTS & HI-POT TESTED (PER TABLE 1, AC OR DC), THE HI-POT VOLTAGE FOR THE ASSEMBLY SHOULD BE SET TO THE END OPTION WITH THE LOWEST TEST VOLTAGE RATING.
3. AFTER FINAL ELECTRICAL TEST, LABEL EACH CABLE ASSEMBLY WITH 1 LABEL-ET.
4. PRODUCT TO BE PACKAGE PER PRECISION RF SECTION OF THE PACKAGING MANUAL. ASSEMBLIES WITH LOCKWASHERS, NUTS, AND GASKETS TO BE SHIPPED KITTED AS ONE ASSEMBLY PER BAG, UNASSEMBLED.
5. DIM "A", "B", AND "C" HAVE A MINIMUM VALUE OF 0.0mm & A MAXIMUM VALUE OF 9.9mm.
6. CONNECTORS TO BE ORIENTED ACCORDING TO CO-RF-WI-3048-M.
7. FOR STRIPPED AND TINNED OPTION, ONLY THE CENTER CONDUCTOR IS TINNED.
8. CABLE LENGTHS LONGER THAN 1000 MILLIMETERS ARE NOT SUPPORTED BY S.I. TEST DATA.

F:\DWG\MISC\MKTG\RFX8T-XXXXX-XXXXXX-XXXX-MKT.SLDDRW

UNLESS OTHERWISE SPECIFIED,
DIMENSIONS ARE IN
MILLIMETERS [INCHES].
TOLERANCES ARE:
DECIMALS ANGLES
.X: ± 0.3 [.01] 2°
.XX: ± 0.13 [.005]
.XXX: ± 0.051 [.0020]

MATERIAL: DO NOT SCALE DRAWING

DIELECTRIC: PTFE
GASKET: SILICONE
SPRING: STAINLESS STEEL
ALL OTHER: BRASS

* PROPRIETARY NOTE *

THIS DOCUMENT CONTAINS CONFIDENTIAL AND
PROPRIETARY INFORMATION AND ALL DESIGN,
MANUFACTURING, REPRODUCTION, USE, PATENT RIGHTS
AND SALES RIGHTS ARE EXPRESSLY RESERVED BY SAMTEC,
INC. THIS DOCUMENT SHALL NOT BE DISCLOSED, IN WHOLE
OR PART, TO ANY UNAUTHORIZED PERSON OR ENTITY NOR
REPRODUCED, TRANSFERRED OR INCORPORATED IN ANY
OTHER PROJECT IN ANY MANNER WITHOUT THE EXPRESS
WRITTEN CONSENT OF SAMTEC, INC.

SHEET SCALE: 2:1

samtec

520 PARK EAST BLVD, NEW ALBANY, IN 47150
PHONE: 812-944-6733 FAX: 812-948-5047
e-Mail: info@SAMTEC.com code 55322

DESCRIPTION:
TRUE 75 OHM, RF8T CABLE ASSEMBLY

DWG. NO.
RFX8T-XXXXX-XXXXXX-XXXX

BY: J. BROWNING 05/13/2010 SHEET 1 OF 6

TABLE 3

END OPTION	SERIES	GENDER	CONFIGURATION	PLATING			FIGURE
				CENTER CONTACT	OUTER CONTACT	OTHER COMPONENTS	
-78SP4	75 OHM DIN 1.0/2.3	PLUG	STRAIGHT	10μ" GOLD	3μ" GOLD	100μ" NICKEL	SHT 3, FIG 3
-78SP5	75 OHM DIN 1.0/2.3	PLUG	STRAIGHT	10μ" GOLD	10μ" GOLD	100μ" NICKEL	
-78SP6	75 OHM DIN 1.0/2.3	PLUG	STRAIGHT	30μ" GOLD	30μ" GOLD	100μ" NICKEL	
-78SP8	75 OHM DIN 1.0/2.3	PLUG	STRAIGHT	30μ" GOLD	3μ" GOLD	100μ" NICKEL	
** -79SP2	75 OHM MINI BNC	PLUG	STRAIGHT	30μ" GOLD	100μ" NICKEL	100μ" NICKEL	SHT 3, FIG 4
** -79SP3	75 OHM MINI BNC	PLUG	STRAIGHT	10μ" GOLD	100μ" NICKEL	100μ" NICKEL	
** -79RP2	75 OHM MINI BNC	PLUG	RIGHT ANGLE	30μ" GOLD	100μ" NICKEL	100μ" NICKEL	SHT 4, FIG 5
** -79RP3	75 OHM MINI BNC	PLUG	RIGHT ANGLE	10μ" GOLD	100μ" NICKEL	100μ" NICKEL	
-H4SP2	75 OHM HIGH DENSITY BNC	PLUG	STRAIGHT	30μ" GOLD	100μ" NICKEL	100μ" NICKEL	SHT 4, FIG 6
-H4SP3	75 OHM HIGH DENSITY BNC	PLUG	STRAIGHT	10μ" GOLD	100μ" NICKEL	100μ" NICKEL	
-H4SP4	75 OHM HIGH DENSITY BNC	PLUG	STRAIGHT	10μ" GOLD	3μ" GOLD	100μ" NICKEL	
-H4SP8	75 OHM HIGH DENSITY BNC	PLUG	STRAIGHT	30μ" GOLD	3μ" GOLD	100μ" NICKEL	
*-SING	SINGLE ENDED	-	-	-	-	-	-
*-XXXXXX	STRIPPED & TINNED	-	-	-	-	-	SHT 1, FIG 2

* = END 2 OPTION ONLY

** = FOR EXISTING CUSTOMERS ONLY

TABLE 1

END OPTION	SUBTRACTOR	STRIP DIMENSIONS			HI POT	
	"Y"	"A"	"D"	"E"	"DC"	"AC"
-78SP4	15.7 [0.62]	2.6 [0.10]	5.0 [0.20]	12.3 [0.48]	1000	300
-78SP5						
-78SP6						
-78SP8						
** -79SP2	8.6 [0.34]	2.5 [0.10]	4.9 [0.19]	10.7 [0.42]	1000	300
** -79SP3						
** -79RP2	5.3 [0.21]	1.1 [0.04]	6.8 [0.27]	13.3 [0.52]	1000	300
** -79RP3						
-H4SP2	13.3 [0.52]	2.6 [0.10]	4.4 [0.17]	11.2 [0.44]	1000	300
-H4SP3						
-H4SP4						
-H4SP8						
*-SING	0.0 [0.00]	-	-	-	1000	N/A
*-XXXXXX	0.0 [0.00]	"A"	"A" + "B"	"A" + "B" + "C"	1000	N/A

* = END 2 OPTION ONLY

** = FOR EXISTING CUSTOMERS ONLY

F:\DWG\MISC\MKTG\RF8T-XXXXX-XXXXX-MKT.SLDDRW

• PROPRIETARY NOTE •
THIS DOCUMENT CONTAINS CONFIDENTIAL AND PROPRIETARY INFORMATION AND ALL DESIGN, MANUFACTURING, REPRODUCTION, USE, PATENT RIGHTS AND SALES RIGHTS ARE EXPRESSLY RESERVED BY SAMTEC, INC. THIS DOCUMENT SHALL NOT BE DISCLOSED, IN WHOLE OR PART, TO ANY UNAUTHORIZED PERSON OR ENTITY NOR REPRODUCED, TRANSFERRED OR INCORPORATED IN ANY OTHER PROJECT IN ANY MANNER WITHOUT THE EXPRESS WRITTEN CONSENT OF SAMTEC, INC.

DO NOT SCALE DRAWING

SHEET SCALE: 2:1



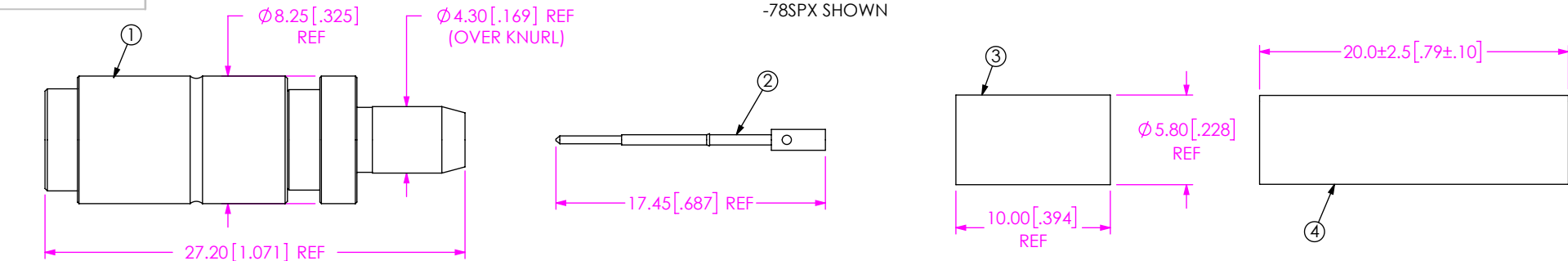
520 PARK EAST BLVD, NEW ALBANY, IN 47150
PHONE: 812-944-6733 FAX: 812-948-5047
e-Mail info@SAMTEC.com code 55322

DESCRIPTION:
TRUE 75 OHM, RF8T CABLE ASSEMBLY

DWG. NO.
RFX8T-XXXXX-XXXXXX-XXXX

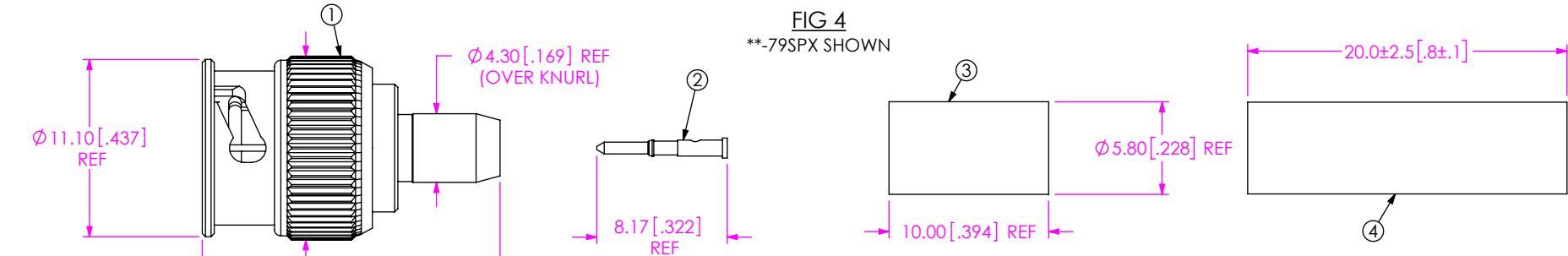
BY: J. BROWNING 05/13/2010 SHEET 2 OF 6

FIG 3
-78SPX SHOWN



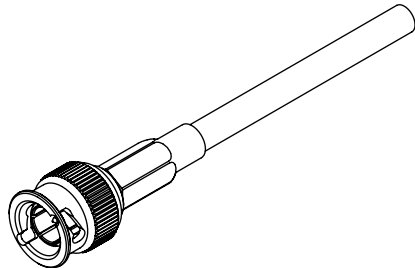
BOM					
ITEM	COMPONENT	-78SP4	-78SP5	-78SP6	-78SP8
1	SUB ASSEMBLY	SUB-DIN7A-PP-C-FN-ST-CA8	SUB-DIN7A-PP-C-GN-ST-CA8	SUB-DIN7A-PP-C-HN-ST-CA8	SUB-DIN7A-PP-C-FN-ST-CA8
2	PIN	DIN7A-P-C-G-ST-CA8-PIN	DIN7A-P-C-G-ST-CA8-PIN	DIN7A-P-C-H-ST-CA8-PIN	DIN7A-P-C-H-ST-CA8-PIN
3	FERRULE	DINA-FER-001-N			
4	HEAT SHRINK TUBE	HST-0.250-02-BLK			

FIG 4
**-79SPX SHOWN



BOM			
ITEM	COMPONENT	** -79SP2	** -79SP3
1	SUB ASSEMBLY	SUB-MBNC7-P-C-N-ST-CA8	
2	PIN	MBNC7-P-C-H-ST-CA8-PIN	MBNC7-P-C-G-ST-CA8-PIN
3	FERRULE	DINA-FER-001-N	
4	HEAT SHRINK TUBE	HST-0.250-02-BLK	

** = FOR EXISTING CUSTOMERS ONLY



PROPRIETARY NOTE

THIS DOCUMENT CONTAINS CONFIDENTIAL AND PROPRIETARY INFORMATION AND ALL DESIGN, MANUFACTURING, REPRODUCTION, USE, PATENT RIGHTS AND SALES RIGHTS ARE EXPRESSLY RESERVED BY SAMTEC, INC. THIS DOCUMENT SHALL NOT BE DISCLOSED, IN WHOLE OR PART, TO ANY UNAUTHORIZED PERSON OR ENTITY NOR REPRODUCED, TRANSFERRED OR INCORPORATED IN ANY OTHER PROJECT IN ANY MANNER WITHOUT THE EXPRESS WRITTEN CONSENT OF SAMTEC, INC.

520 PARK EAST BLVD, NEW ALBANY, IN 47150
PHONE: 812-944-6733 FAX: 812-948-5047
e-Mail: info@SAMTEC.com code: 55322

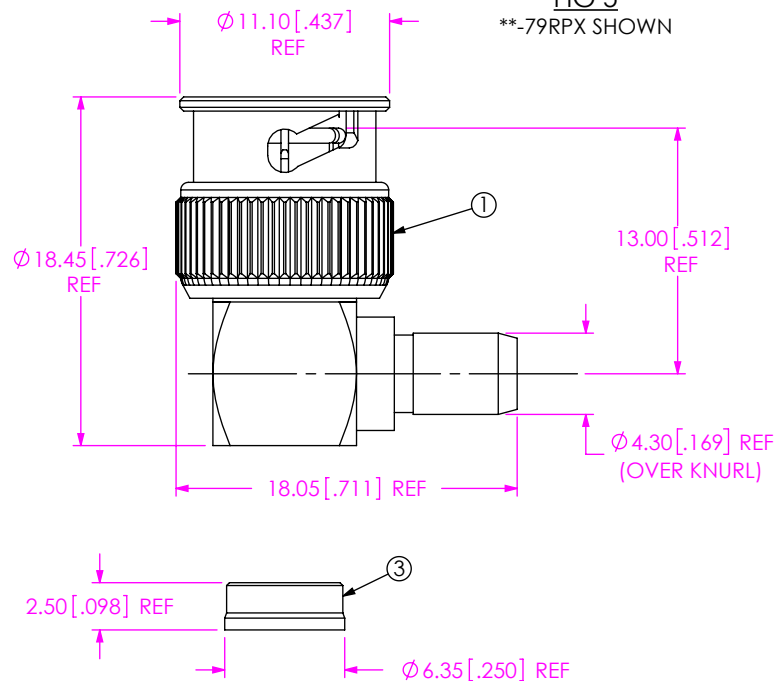
DO NOT SCALE DRAWING

SHEET SCALE: 2.5:1

DESCRIPTION:
TRUE 75 OHM, RF8T CABLE ASSEMBLY

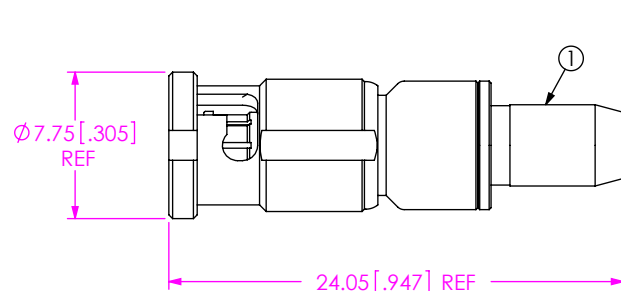
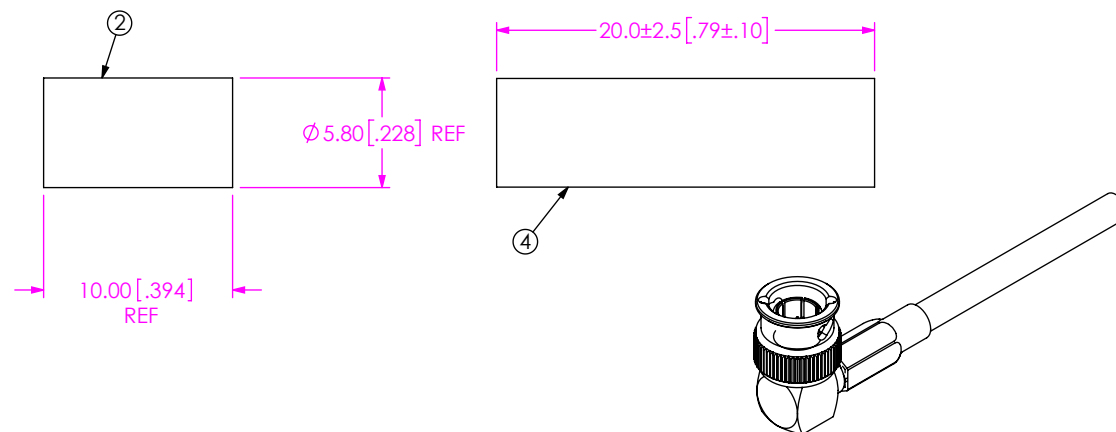
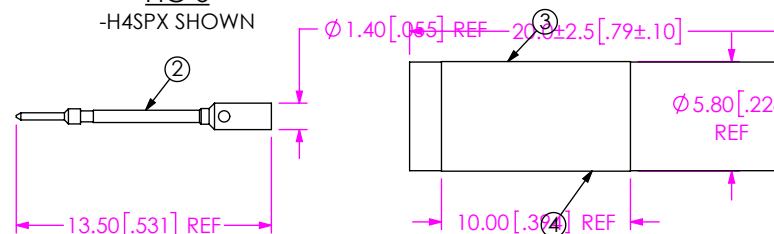
DWG. NO.
RFX8T-XXXXXX-XXXXXX-XXXX

BY: J. BROWNING 05/13/2010 SHEET 3 OF 6

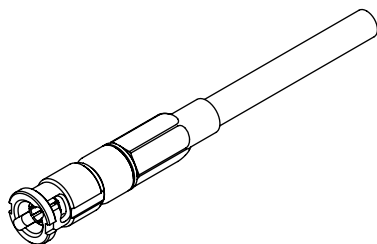
FIG 5
**-79RPX SHOWN

BOM			
ITEM	COMPONENT	** -79RP2	** -79RP3
1	SUB ASSEMBLY	SUB-MBNC7-P-C-HN-RA-CA8	SUB-MBNC7-P-C-GN-RA-CA8
2	FERRULE	DINA-FER-001-N	
3	CAP	MBNC7-P-C-N-RA-CAP	
4	HEAT SHRINK TUBE	HST-0.250-02-BLK	

** = FOR EXISTING CUSTOMERS ONLY

FIG 6
-H4SPX SHOWN

BOM					
ITEM	COMPONENT	-H4SP2	-H4SP3	-H4SP4	-H4SP8
1	SUB ASSEMBLY	SUB-HDBNC-P-C-NN-ST-CA8	SUB-HDBNC-P-C-NN-ST-CA8	SUB-HDBNC-P-C-FN-ST-CA8	SUB-HDBNC-P-C-FN-ST-CA8
2	PIN	HDBNC-P-C-H-ST-CA8-PIN	HDBNC-P-C-G-ST-CA8-PIN	HDBNC-P-C-G-ST-CA8-PIN	HDBNC-P-C-H-ST-CA8-PIN-X
3	FERRULE	DINA-FER-001-N			
4	HEAT SHRINK TUBE	HST-0.250-02-BLK			



PROPRIETARY NOTE
THIS DOCUMENT CONTAINS CONFIDENTIAL AND PROPRIETARY INFORMATION AND ALL DESIGN, MANUFACTURING, REPRODUCTION, USE, PATENT RIGHTS AND SALES RIGHTS ARE EXPRESSLY RESERVED BY SAMTEC, INC. THIS DOCUMENT SHALL NOT BE DISCLOSED, IN WHOLE OR PART, TO ANY UNAUTHORIZED PERSON OR ENTITY NOR REPRODUCED, TRANSFERRED OR INCORPORATED IN ANY OTHER PROJECT IN ANY MANNER WITHOUT THE EXPRESS WRITTEN CONSENT OF SAMTEC, INC.

DO NOT SCALE DRAWING

SHEET SCALE: 2.5:1

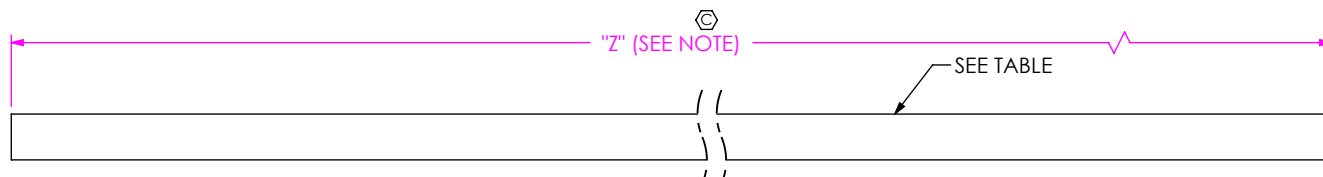
samtec

520 PARK EAST BLVD, NEW ALBANY, IN 47150
PHONE: 812-944-6733 FAX: 812-948-5047
e-Mail: info@SAMTEC.com code 55322

DESCRIPTION:
TRUE 75 OHM, RF8T CABLE ASSEMBLY

DWG. NO.
RFX8T-XXXXXX-XXXXXX-XXXX

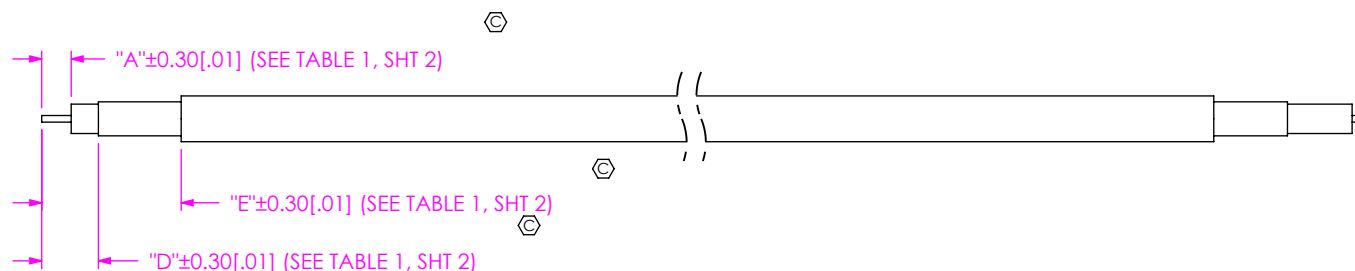
BY: J. BROWNING 05/13/2010 SHEET 4 OF 6



NOTE: "Z" = $2 \times \text{OAL} - 2 \times [\text{"Y"}(\text{END 1})]$ (FOR -SING OR -XXXXXX OPTIONS)
 "Z" = $\text{OAL} - \text{"Y"}(\text{END 1}) - \text{"Y"}(\text{END 2})$ (FOR DOUBLE ENDED OPTIONS)

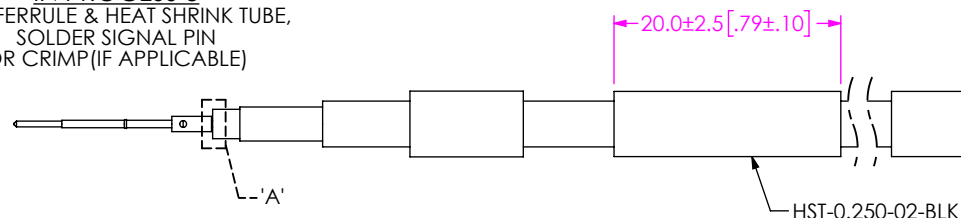
TABLE	
CABLE CALLOUT	PART NUMBER
RFB8T	CCA-1855A
RFC8T	CCA-4855R

IN PROCESS 1
CUT CABLE TO LENGTH



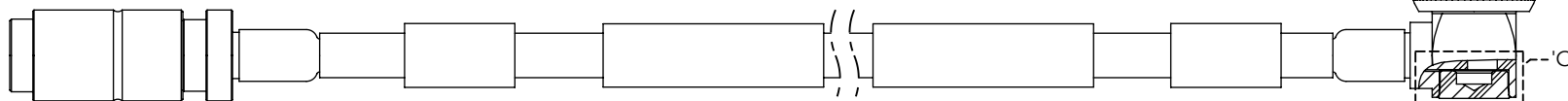
IN PROCESS 2
STRIP AND TIN INNER CONDUCTOR

STRAIGHT
IN PROCESS 3
ADD FERRULE & HEAT SHRINK TUBE,
SOLDER SIGNAL PIN
OR CRIMP (IF APPLICABLE)



RIGHT ANGLE
IN PROCESS 3
ADD FERRULE & HEAT SHRINK TUBE,
FLARE SHIELD, ADD SUB ASSEMBLY,
AND SOLDER SIGNAL PIN
(SEE NOTE 6)

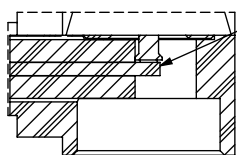
STRAIGHT
IN PROCESS 4
FLARE SHIELD,
ADD SUB ASSEMBLY
(SEE NOTE 6)



RIGHT ANGLE
IN-PROCESS 4
INSERT CAP

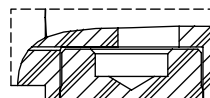
0.10[.004] MAX

DETAIL 'A'
SCALE 3 : 1



DETAIL 'B'
SCALE 3 : 1

CABLE CENTER CONDUCTOR
SHOULD NOT PROTRUDE
OUTSIDE CONTACT CUP



0.00±0.10[.000±.004]

DETAIL 'C'
SCALE 3 : 1

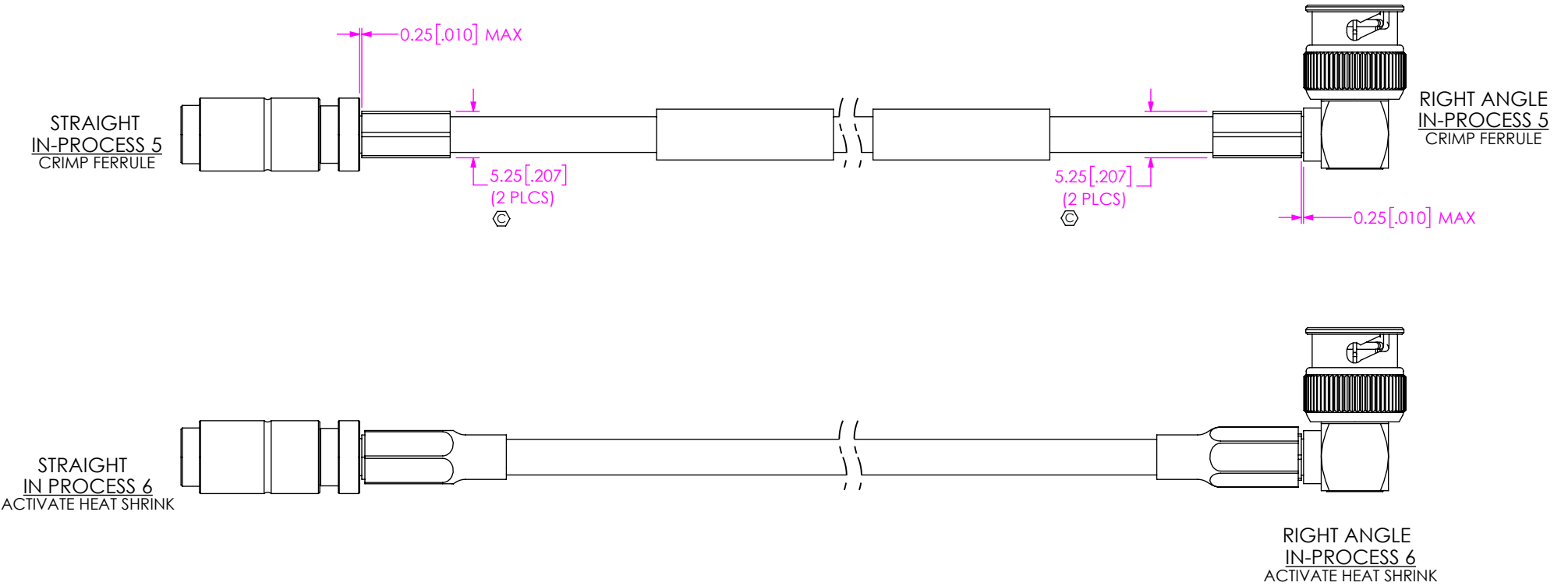
PROPRIETARY NOTE
THIS DOCUMENT CONTAINS CONFIDENTIAL AND
PROPRIETARY INFORMATION AND ALL DESIGN,
MANUFACTURING, REPRODUCTION, USE, PATENT RIGHTS
AND SALES RIGHTS ARE EXPRESSLY RESERVED BY SAMTEC,
INC. THIS DOCUMENT SHALL NOT BE DISCLOSED, IN WHOLE
OR PART, TO ANY UNAUTHORIZED PERSON OR ENTITY NOR
REPRODUCED, TRANSFERRED OR INCORPORATED IN ANY
OTHER PROJECT IN ANY MANNER WITHOUT THE EXPRESS
WRITTEN CONSENT OF SAMTEC, INC.

DO NOT SCALE DRAWING
SHEET SCALE: 1:5:1


samtec

520 PARK EAST BLVD, NEW ALBANY, IN 47150
PHONE: 812-944-6733 FAX: 812-948-5047
e-Mail: info@SAMTEC.com code 55322

DESCRIPTION:
TRUE 75 OHM, RF8T CABLE ASSEMBLY
DWG. NO.
RFX8T-XXXXXX-XXXXXX-XXXX
BY: J. BROWNING 05/13/2010 SHEET 5 OF 6



F:\DWG\MISC\MKTG\RF8T-XXXXX-XXXXXX-XXXX-MKT.SLDDRW

<p>• PROPRIETARY NOTE •</p> <p>THIS DOCUMENT CONTAINS CONFIDENTIAL AND PROPRIETARY INFORMATION AND ALL DESIGN, MANUFACTURING, REPRODUCTION, USE, PATENT RIGHTS AND SALES RIGHTS ARE EXPRESSLY RESERVED BY SAMTEC, INC. THIS DOCUMENT SHALL NOT BE DISCLOSED, IN WHOLE OR PART, TO ANY UNAUTHORIZED PERSON OR ENTITY NOR REPRODUCED, TRANSFERRED OR INCORPORATED IN ANY OTHER PROJECT IN ANY MANNER WITHOUT THE EXPRESS WRITTEN CONSENT OF SAMTEC, INC.</p>		
	<p>520 PARK EAST BLVD, NEW ALBANY, IN 47150 PHONE: 812-944-6733 FAX: 812-948-5047 e-Mail info@SAMTEC.com code 55322</p>	
	<p>DESCRIPTION: TRUE 75 OHM, RF8T CABLE ASSEMBLY</p>	
	<p>DWG. NO. RFX8T-XXXXX-XXXXXX-XXXX</p>	
<p>DO NOT SCALE DRAWING</p> <p>SHEET SCALE: 1.5:1</p>		<p>BY: J. BROWNING 05/13/2010 SHEET 6 OF 6</p>