

DO NOT  
SCALE FROM  
THIS PRINT



THIS PRODUCT MANUFACTURED  
WITH LEAD-FREE PROCESSING

DESIGNED & DIMENSIONED  
IN MILLIMETERS[INCHES]

SMA-J-C-X-ST-BH3

GENDER  
-J: JACK

TYPE  
-C: CABLE

TERMINATION  
-BH3: BULKHEAD  
(MH081 CABLE)

ORIENTATION  
-ST: STRAIGHT

PLATING SPECIFICATION

-H: HEAVY GOLD (SEE NOTES 7 & 8)  
(SMA-J-C-F-ST-BH3-CBDY)  
(SMA-INS-016)  
(SMA-SKT-004-H)  
(SUB-SMA-J-C-F-ST-BH3)  
(SMA-LWAS-001-F)  
(SMA-NUT-001-F)

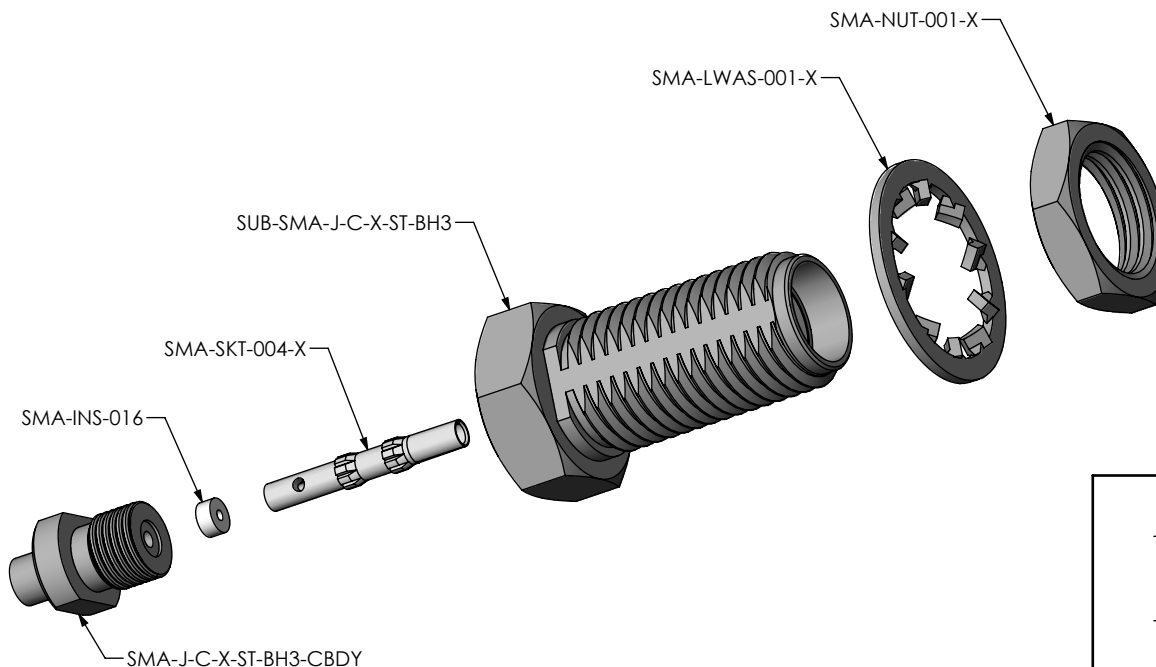
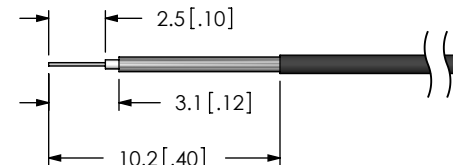
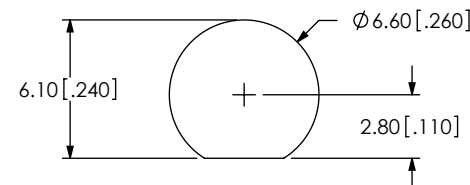


FIG 1  
SMA-J-C-X-ST-BH3 SHOWN

RECOMMENDED CABLE STRIPPING



RECOMMENDED PANEL CUTOUT  
3.80[.150] MAX. PANEL THICKNESS



NOTES:

1. REPRESENTS A CRITICAL DIMENSION.
2. CENTER CONTACT PUSHOUT FORCE: 13.35 N [3 LB] MIN.
3. SEE SHEET 3 FOR TERMINATION INFORMATION.
4. DELETED NOTE.
5. PRODUCT TO BE PACKAGED PER PACKAGING STANDARD CO-RF-WI-3040-M.
6. RoHS COMPLIANT.
7. PLATING: -F: .00003" MIN GOLD OVER .000050" MIN NICKEL.  
-H: .000030" MIN GOLD OVER .000050" MIN NICKEL.
8. ASSEMBLY PLATING DESIGNATIONS:  
-H: (CENTER CONTACT)-H  
(OUTER CONTACT) -F  
(REMAINING METAL PARTS) -F

F:\DWG\MISC\MKTG\SMA-J-C-X-ST-BH3-MKT.SLDDRW

UNLESS OTHERWISE SPECIFIED,  
DIMENSIONS ARE IN  
MILLIMETERS [INCHES].  
TOLERANCES ARE:

DECIMALS ANGLES  
.X:  $\pm 0.3$  [.01] 2°  
.XX:  $\pm 0.13$  [.005]  
.XXX:  $\pm 0.051$  [.0020]

PROPRIETARY NOTE

THIS DOCUMENT CONTAINS INFORMATION  
CONFIDENTIAL AND PROPRIETARY TO  
SAMTEC, INC. AND SHALL NOT BE REPRODUCED  
OR TRANSFERRED TO OTHER DOCUMENTS OR  
DISCLOSED TO OTHERS OR USED FOR ANY  
PURPOSE OTHER THAN THAT WHICH IT WAS  
OBTAINED WITHOUT THE EXPRESSED WRITTEN  
CONSENT OF SAMTEC, INC.

MATERIAL: DO NOT SCALE DRAWING SHEET SCALE: 1:0.333333  
SHELL, FERRULE, NUT, WASHER: BRASS  
CONTACT: COPPER ALLOY  
DIELECTRIC: PTFE

**samtec**

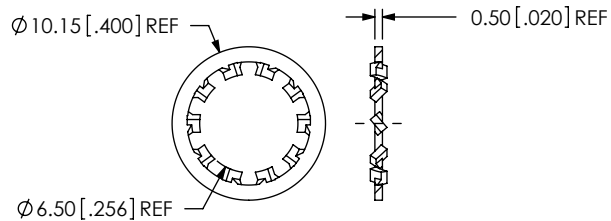
520 PARK EAST BLVD, NEW ALBANY, IN 47150  
PHONE: 812-944-6733 FAX: 812-948-5047  
e-Mail: info@SAMTEC.com code: 55322

DESCRIPTION:  
SMA STR JACK BULKHEAD, MH081- 50 OHM

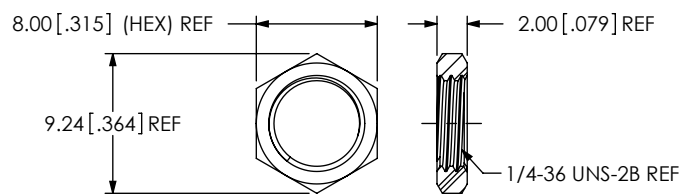
DWG. NO.  
SMA-J-C-X-ST-BH3

BY: R MUSSER 01/28/2008 SHEET 1 OF 3

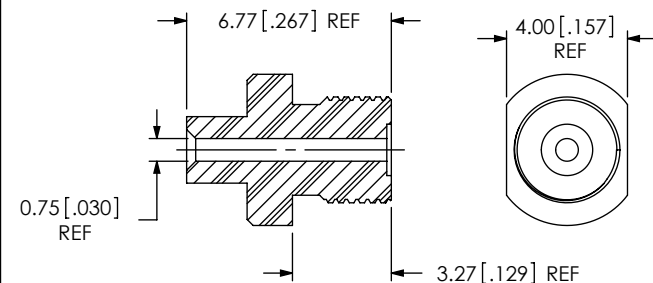
# REVISION G



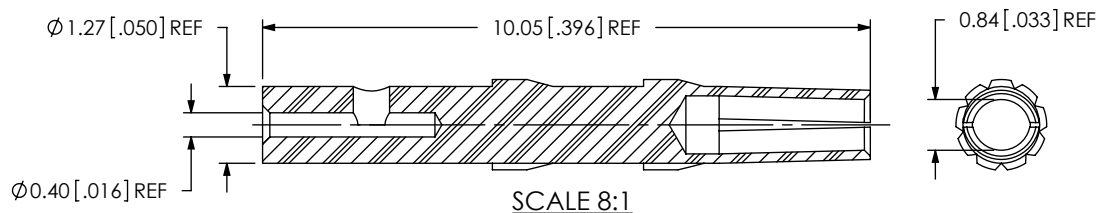
SAMTEC PART NUMBER	ITEM
SMA-LWAS-001-X	LOCK WASHER



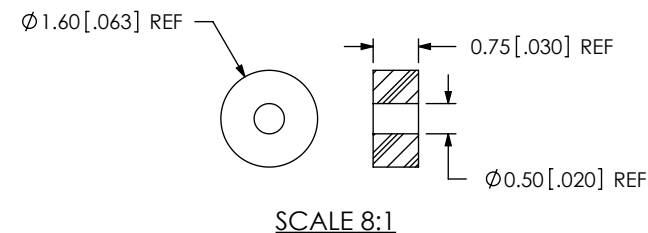
SAMTEC PART NUMBER	ITEM
SMA-NUT-001-X	HEX NUT



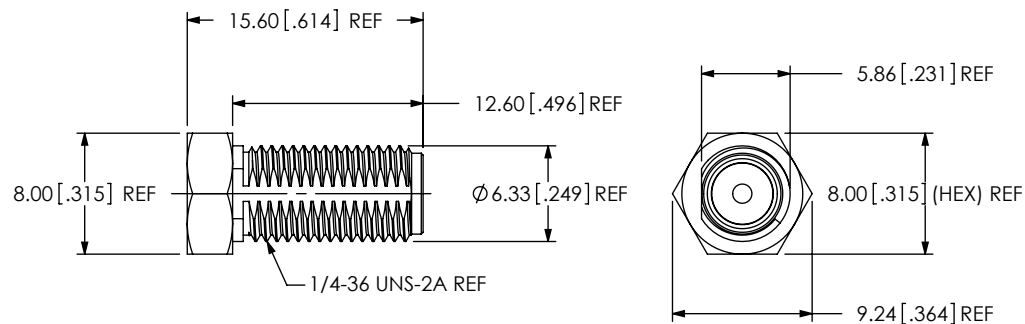
SAMTEC PART NUMBER	ITEM
SMA-J-C-X-ST-BH3-CBDY	REAR THREADED BODY



SAMTEC PART NUMBER	ITEM
SMA-SKT-004-X	SOCKET



SAMTEC PART NUMBER	ITEM
SMA-INS-016	INSULATOR



SAMTEC PART NUMBER	ITEM
SUB-SMA-J-C-X-ST-BH3	SUB ASSEMBLY

F:\DWG\MISC\MKTG\SMA-J-C-X-ST-BH3-MKT.SLDDRW

## PROPRIETARY NOTE

THIS DOCUMENT CONTAINS INFORMATION  
CONFIDENTIAL AND PROPRIETARY TO  
SAMTEC, INC. AND SHALL NOT BE REPRODUCED  
OR TRANSFERRED TO OTHER DOCUMENTS OR  
DISCLOSED TO OTHERS OR USED FOR ANY  
PURPOSE OTHER THAN THAT WHICH IT WAS  
OBTAINED WITHOUT THE EXPRESSED WRITTEN  
CONSENT OF SAMTEC, INC.

DO NOT SCALE DRAWING

SHEET SCALE: 2:1

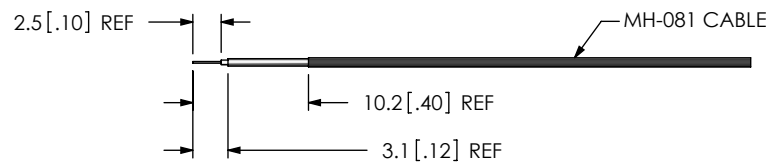
# samtec

520 PARK EAST BLVD, NEW ALBANY, IN 47150  
PHONE: 812-944-6733 FAX: 812-948-5047  
e-Mail: info@SAMTEC.com code: 55322

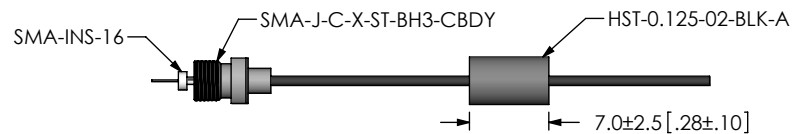
DESCRIPTION:  
SMA STR JACK BULKHEAD, MH081- 50 OHM

DWG. NO.  
SMA-J-C-X-ST-BH3

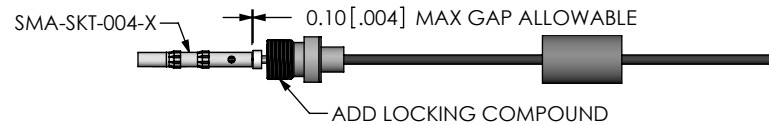
BY: R MUSSER 01/28/2008 SHEET 2 OF 3



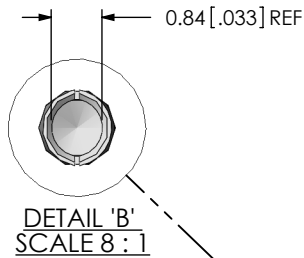
STRIP AND TIN INNER AND OUTER CONDUCTOR



ADD HEAT SHRINK TUBE, REAR THREADED BODY, AND INSULATOR



SOLDER SIGNAL SOCKET AND APPLY LOCTITE 680 TO THREADS



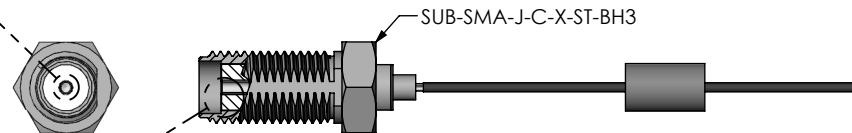
TIP OF CONTACT TO BE FLUSH WITH REFERENCE PLANE OR RECESSED 0.10 [.004] MAX.



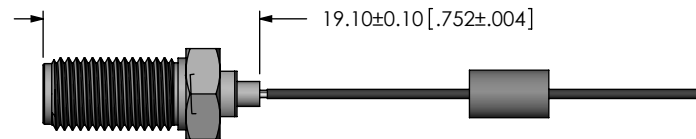
0.05 [.002] REF (TO INSULATOR)

REFERENCE PLANE

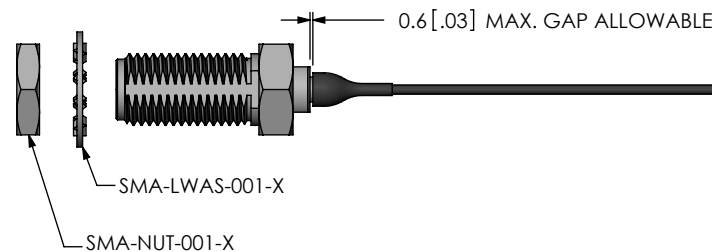
DETAIL 'A'  
SCALE 8:1



ADD SUB-SMA-J-C-X-ST-BH3 & TIGHTEN REAR-THREADED BODY TO 10 IN-LBS



SOLDER SHIELD



APPLY HEAT SHRINK TUBING

F:\DWG\MISC\MKTG\SMA-J-C-X-ST-BH3-MKT.SLDDRW

PROPRIETARY NOTE

THIS DOCUMENT CONTAINS INFORMATION CONFIDENTIAL AND PROPRIETARY TO SAMTEC, INC. AND SHALL NOT BE REPRODUCED OR TRANSFERRED TO OTHER DOCUMENTS OR DISCLOSED TO OTHERS OR USED FOR ANY PURPOSE OTHER THAN THAT WHICH IT WAS OBTAINED WITHOUT THE EXPRESSED WRITTEN CONSENT OF SAMTEC, INC.

DO NOT SCALE DRAWING

SHEET SCALE: 1.5:1

**samtec**

520 PARK EAST BLVD, NEW ALBANY, IN 47150  
PHONE: 812-944-6733 FAX: 812-948-5047  
e-Mail: info@SAMTEC.com code: 55322

DESCRIPTION:  
SMA STR JACK BULKHEAD, MH081- 50 OHM

DWG. NO.  
SMA-J-C-X-ST-BH3

BY: R MUSSER 01/28/2008 SHEET 3 OF 3